

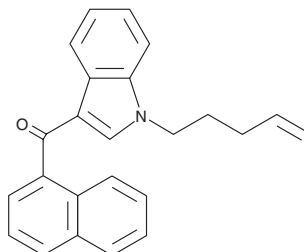
PRODUCT INFORMATION



JWH 022

Item No. 9001056

CAS Registry No.: 209414-16-4
Formal Name: 1-naphthalenyl[1-(4-penten-1-yl)-1H-indol-3-yl]-methanone
MF: C₂₄H₂₁NO
FW: 339.4
Purity: ≥98%
UV/Vis.: λ_{max}: 218, 247, 316 nm
Supplied as: A solution in methanol
Storage: -20°C
Stability: ≥4 years



Information represents the product specifications. Batch specific analytical results are provided on each certificate of analysis.

Description

JWH 022 is a cannabimimetic indole that is structurally related to JWH 018, a mildly selective agonist of the peripheral cannabinoid (CB₂) receptor.¹ The biological activity of JWH 022 has not been reported.

Reference

1. Sobolevsky, T., Prasolov, I., and Rodchenkov, G. Detection of JWH-018 metabolites in smoking mixture post-administration urine. *Forensic Sci. Int.* **200(1-3)**, 141-147 (2010).

WARNING

THIS PRODUCT IS FOR RESEARCH ONLY - NOT FOR HUMAN OR VETERINARY DIAGNOSTIC OR THERAPEUTIC USE.

SAFETY DATA

This material should be considered hazardous until further information becomes available. Do not ingest, inhale, get in eyes, on skin, or on clothing. Wash thoroughly after handling. Before use, the user must review the [complete](#) Safety Data Sheet, which has been sent via email to your institution.

WARRANTY AND LIMITATION OF REMEDY

Buyer agrees to purchase the material subject to Cayman's Terms and Conditions. Complete Terms and Conditions including Warranty and Limitation of Liability information can be found on our website.

Copyright Cayman Chemical Company, 06/21/2023

CAYMAN CHEMICAL

1180 EAST ELLSWORTH RD
ANN ARBOR, MI 48108 · USA

PHONE: [800] 364-9897
[734] 971-3335

FAX: [734] 971-3640

CUSTSERV@CAYMANCHEM.COM
WWW.CAYMANCHEM.COM