

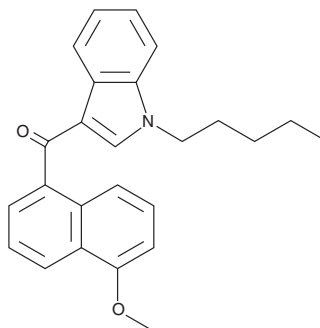
# PRODUCT INFORMATION



## JWH 081 5-methoxynaphthyl isomer

Item No. 9001046

**CAS Registry No.:** 1427325-65-2  
**Formal Name:** (5-methoxynaphthalen-1-yl)  
(1-pentyl-1H-indol-3-yl)  
methanone  
**MF:** C<sub>25</sub>H<sub>25</sub>NO<sub>2</sub>  
**FW:** 371.5  
**Purity:** ≥98%  
**UV/Vis.:** λ<sub>max</sub>: 214, 315 nm  
**Supplied as:** A crystalline solid  
**Storage:** -20°C  
**Stability:** ≥5 years



Information represents the product specifications. Batch specific analytical results are provided on each certificate of analysis.

### Description

JWH 081 is a synthetic cannabinoid (CB) that shows a high-affinity for the central CB<sub>1</sub> receptor with a K<sub>i</sub> value of 1.2 nM and ten-fold reduced affinity for the peripheral CB<sub>2</sub> receptor (K<sub>i</sub> = 12.4 nM).<sup>1,2</sup> JWH 081 5-methoxynaphthyl isomer differs structurally from JWH 081 by having the methoxy group attached to the naphthyl rings at the 5 position, instead of the 4 position. The biological and toxicological properties of this compound have not been characterized. This product is intended for research and forensic applications.

### References

1. Aung, M.M., Griffin, G., Huffman, J.W., *et al.* Influence of the N-1 alkyl chain length of cannabimimetic indoles upon CB<sub>1</sub> and CB<sub>2</sub> receptor binding. *Drug Alcohol Depend.* **60(2)**, 133-140 (2000).
2. Huffman, J.W., Zengin, G., Wu, M.J., *et al.* Structure-activity relationships for 1-alkyl-3-(1-naphthoyl) indoles at the cannabinoid CB<sub>1</sub> and CB<sub>2</sub> receptors: Steric and electronic effects of naphthoyl substituents. New highly selective CB<sub>2</sub> receptor agonists. *Bioorg. Med. Chem.* **13(1)**, 89-112 (2005).

#### WARNING

THIS PRODUCT IS FOR RESEARCH ONLY - NOT FOR HUMAN OR VETERINARY DIAGNOSTIC OR THERAPEUTIC USE.

#### SAFETY DATA

This material should be considered hazardous until further information becomes available. Do not ingest, inhale, get in eyes, on skin, or on clothing. Wash thoroughly after handling. Before use, the user must review the [complete](#) Safety Data Sheet, which has been sent via email to your institution.

#### WARRANTY AND LIMITATION OF REMEDY

Buyer agrees to purchase the material subject to Cayman's Terms and Conditions. Complete Terms and Conditions including Warranty and Limitation of Liability information can be found on our website.

Copyright Cayman Chemical Company, 06/20/2023

#### CAYMAN CHEMICAL

1180 EAST ELLSWORTH RD  
ANN ARBOR, MI 48108 · USA

**PHONE:** [800] 364-9897  
[734] 971-3335

**FAX:** [734] 971-3640

CUSTSERV@CAYMANCHEM.COM  
[WWW.CAYMANCHEM.COM](http://WWW.CAYMANCHEM.COM)