

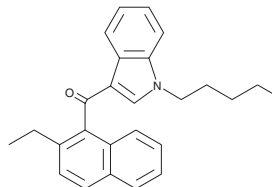
# PRODUCT INFORMATION



## JWH 210 2-ethylnaphthyl isomer

Item No. 9001038

**CAS Registry No.:** 1427325-79-8  
**Formal Name:** (2-ethylnaphthalen-1-yl)(1-pentyl-1H-indol-3-yl) methanone  
**MF:** C<sub>26</sub>H<sub>27</sub>NO  
**FW:** 369.5  
**Purity:** ≥98%  
**UV/Vis.:** λ<sub>max</sub>: 224, 249, 314 nm  
**Supplied as:** A crystalline solid  
**Storage:** -20°C  
**Stability:** ≥5 years



Information represents the product specifications. Batch specific analytical results are provided on each certificate of analysis.

### Description

JWH 210 is a potent cannabimimetic alkylindole that has been identified in extracts from herbal blends.<sup>1,2</sup> JWH 210 2-ethylnaphthyl isomer is a positional isomer of JWH 210, having the ethyl side chain at the 2 position rather than at the 4 position of the naphthyl group. The biological activities of this isomer have not been determined. This product is intended for forensic purposes.

### References

- Huffman, J.W., Zengin, G., Wu, M.-J., *et al.* Structure-activity relationships for 1-alkyl-3-(1-naphthoyl) indoles at the cannabinoid CB<sub>1</sub> and CB<sub>2</sub> receptors: steric and electronic effects of naphthoyl substituents. New highly selective CB<sub>2</sub> receptor agonists. *Bioorg. Med. Chem.* **13(1)**, 89-112 (2005).
- Kikura-Hanajiri, R., Uchiyama, N., and Goda, Y. Survey of current trends in the abuse of psychotropic substances and plants in Japan. *Leg. Med. (Tokyo)* **13(3)**, 109-15 (2011).

#### WARNING

THIS PRODUCT IS FOR RESEARCH ONLY - NOT FOR HUMAN OR VETERINARY DIAGNOSTIC OR THERAPEUTIC USE.

#### SAFETY DATA

This material should be considered hazardous until further information becomes available. Do not ingest, inhale, get in eyes, on skin, or on clothing. Wash thoroughly after handling. Before use, the user must review the [complete](#) Safety Data Sheet, which has been sent via email to your institution.

#### WARRANTY AND LIMITATION OF REMEDY

Buyer agrees to purchase the material subject to Cayman's Terms and Conditions. Complete Terms and Conditions including Warranty and Limitation of Liability information can be found on our website.

Copyright Cayman Chemical Company, 06/20/2023

#### CAYMAN CHEMICAL

1180 EAST ELLSWORTH RD  
ANN ARBOR, MI 48108 · USA

**PHONE:** [800] 364-9897  
[734] 971-3335

**FAX:** [734] 971-3640

CUSTSERV@CAYMANCHEM.COM  
WWW.CAYMANCHEM.COM