

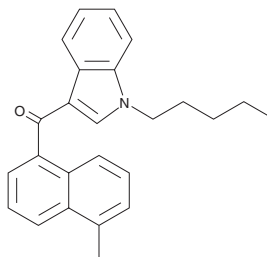
# PRODUCT INFORMATION



## JWH 122 5-methylnaphthyl isomer

Item No. 9001034

**CAS Registry No.:** 1391052-02-0  
**Formal Name:** (5-methylnaphthalen-1-yl)  
(1-pentyl-1H-indol-3-yl)  
methanone  
**MF:** C<sub>25</sub>H<sub>25</sub>NO  
**FW:** 355.5  
**Purity:** ≥98%  
**UV/Vis.:** λ<sub>max</sub>: 222, 315 nm  
**Supplied as:** A crystalline solid  
**Storage:** -20°C  
**Stability:** ≥5 years



Information represents the product specifications. Batch specific analytical results are provided on each certificate of analysis.

### Description

JWH 122 is a synthetic cannabinoid (CB) that displays high-affinities for both central cannabinoid (CB<sub>1</sub>) (K<sub>i</sub> = 0.69 nM) and peripheral cannabinoid (CB<sub>2</sub>) (K<sub>i</sub> = 1.2 nM) receptors.<sup>1,2</sup> It has been detected in commercially-available herbal products.<sup>3</sup> JWH 122 5-methylnaphthyl isomer differs from JWH 122 in that the methyl group is attached to the naphthyl rings at the 5, rather than the 4, position. The biological and toxicological properties of this compound have not been characterized. This product is intended for forensic purposes.

### References

1. Huffman, J.W., Mabon, R., Wu, M.-J., *et al.* 3-indolyl-1-naphthylmethanes: New cannabimimetic indoles provide evidence for aromatic stacking interactions with the CB<sub>1</sub> cannabinoid receptor. *Bioorg. Med. Chem.* **11(4)**, 539-549 (2003).
2. Huffman, J.W., Zengin, G., Wu, M.-J., *et al.* Structure-activity relationships for 1-alkyl-3-(1-naphthoyl) indoles at the cannabinoid CB<sub>1</sub> and CB<sub>2</sub> receptors: Steric and electronic effects of naphthoyl substituents. New highly selective CB<sub>2</sub> receptor agonists. *Bioorg. Med. Chem.* **13(1)**, 89-112 (2005).
3. Kikura-Hanajiri, R., Uchiyama, N., and Goda, Y. Survey of current trends in the abuse of psychotropic substances and plants in Japan. *Leg. Med. (Tokyo)* **13(3)**, 109-15 (2011).

#### WARNING

THIS PRODUCT IS FOR RESEARCH ONLY - NOT FOR HUMAN OR VETERINARY DIAGNOSTIC OR THERAPEUTIC USE.

#### SAFETY DATA

This material should be considered hazardous until further information becomes available. Do not ingest, inhale, get in eyes, on skin, or on clothing. Wash thoroughly after handling. Before use, the user must review the complete Safety Data Sheet, which has been sent via email to your institution.

#### WARRANTY AND LIMITATION OF REMEDY

Buyer agrees to purchase the material subject to Cayman's Terms and Conditions. Complete Terms and Conditions including Warranty and Limitation of Liability information can be found on our website.

Copyright Cayman Chemical Company, 06/19/2023

#### CAYMAN CHEMICAL

1180 EAST ELLSWORTH RD

ANN ARBOR, MI 48108 · USA

**PHONE:** [800] 364-9897

[734] 971-3335

**FAX:** [734] 971-3640

CUSTSERV@CAYMANCHEM.COM

WWW.CAYMANCHEM.COM