

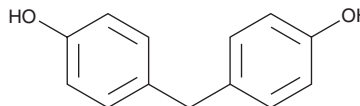
# PRODUCT INFORMATION



## Bisphenol F

Item No. 45557

**CAS Registry No.:** 620-92-8  
**Formal Name:** 4,4'-methylenebis-phenol  
**Synonyms:** 4,4'-Dihydroxydiphenylmethane,  
BPF, NSC 401136  
**MF:** C<sub>13</sub>H<sub>12</sub>O<sub>2</sub>  
**FW:** 200.2  
**Purity:** ≥98%  
**Supplied as:** A solid  
**Storage:** -20°C  
**Stability:** ≥4 years



Information represents the product specifications. Batch specific analytical results are provided on each certificate of analysis.

### Laboratory Procedures

Bisphenol F (BPF) is supplied as a solid. A stock solution may be made by dissolving the BPF in the solvent of choice, which should be purged with an inert gas. BPF is sparingly soluble (1-10 mg/ml) in DMSO and slightly soluble (0.1-1 mg/ml) in ethanol.

### Description

BPF is a derivative of bisphenol A (BPA), an environmental contaminant, and an endocrine disruptor.<sup>1-3</sup> It has been detected in personal care products, wastewater treatment sludge, bottled water, and canned foods.<sup>2-4</sup> BPF has estrogenic activity *in vitro* and in female rats.<sup>2</sup> It also has neurotoxic effects, affecting neural stem cell proliferation and differentiation, synapse formation, and cell viability *in vitro* and in animal models, as well as CNS morphology, locomotion, and cognition in animal models.<sup>1</sup> BPF increases hepatic triglyceride and fatty acid levels in mice, and serum levels of BPF are increased in patients with non-alcoholic fatty liver disease (NAFLD).<sup>5</sup>

### References

1. Cantua, R. and Mulligan, K. Developmental neurotoxicity of bisphenol F and bisphenol S in animal model systems: A literature review. *Neurotoxicology* **108**, 263-280 (2025).
2. Rochester, J.R. and Bolden, A.L. Bisphenol S and F: A systematic review and comparison of the hormonal activity of bisphenol A substitutes. *Environ. Health Perspect.* **123**(7), 643-650 (2015).
3. Lee, S., Liao, C., Song, G.J., et al. Emission of bisphenol analogues including bisphenol A and bisphenol F from wastewater treatment plants in Korea. *Chemosphere* **119**, 1000-1006 (2015).
4. Zhou, J., Chen, X.H., Pan, S.D., et al. Contamination status of bisphenol A and its analogues (bisphenol S, F and B) in foodstuffs and the implications for dietary exposure on adult residents in Zhejiang Province. *Food Chem.* **294**, 160-170 (2019).
5. Wang, J., Yu, P., Xie, X., et al. Bisphenol F induces nonalcoholic fatty liver disease-like changes: Involvement of lysosome disorder in lipid droplet deposition. *Environ. Pollut.* **271**, 116304 (2021).

#### WARNING

THIS PRODUCT IS FOR RESEARCH ONLY - NOT FOR HUMAN OR VETERINARY DIAGNOSTIC OR THERAPEUTIC USE.

#### SAFETY DATA

This material should be considered hazardous until further information becomes available. Do not ingest, inhale, get in eyes, on skin, or on clothing. Wash thoroughly after handling. Before use, the user must review the complete Safety Data Sheet, which has been sent via email to your institution.

#### WARRANTY AND LIMITATION OF REMEDY

Buyer agrees to purchase the material subject to Cayman's Terms and Conditions. Complete Terms and Conditions including Warranty and Limitation of Liability information can be found on our website.

Copyright Cayman Chemical Company, 05/22/2026

#### CAYMAN CHEMICAL

1180 EAST ELLSWORTH RD  
ANN ARBOR, MI 48108 · USA

**PHONE:** [800] 364-9897  
[734] 971-3335

**FAX:** [734] 971-3640

CUSTSERV@CAYMANCHEM.COM  
WWW.CAYMANCHEM.COM