

PRODUCT INFORMATION



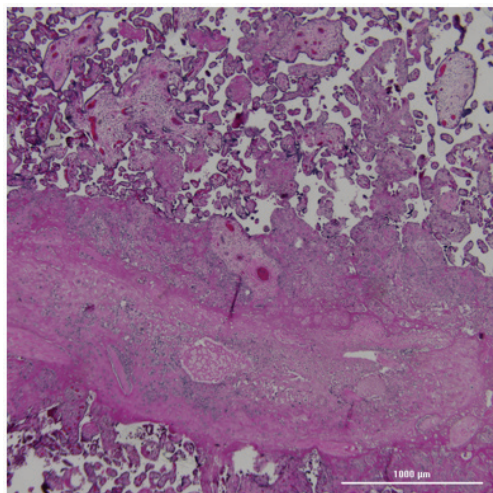
Human Placental Tissue (Basal Plate; Normal) - FFPE Block

Item No. 45235

Overview and Properties

Contents:	Formalin-fixed paraffin-embedded (FFPE) human placental tissue (basal plate; normal)
Synonym:	Human Placental Tissue (Basal Plate; Normal) - Formalin-Fixed, Paraffin-Embedded Block
Storage:	4°C
Stability:	≥3 years
Source:	<i>batch specific</i>
Species:	Human
Sex:	Female
Sampling Age:	<i>batch specific</i>
Tissue:	Placenta
Diagnosis:	Normal
Donor:	Single donor
Form:	Solid tissue
Application:	Immunohistochemistry (IHC)

Image



Immunohistochemistry (IHC). Hematoxylin and eosin (H&E) image taken from representative Human Placental Tissue (Basal Plate; Normal) - FFPE Block (Item No. 45235) (4X).

WARNING
THIS PRODUCT IS FOR RESEARCH ONLY - NOT FOR HUMAN OR VETERINARY DIAGNOSTIC OR THERAPEUTIC USE.

SAFETY DATA
This material should be considered hazardous until further information becomes available. Do not ingest, inhale, get in eyes, on skin, or on clothing. Wash thoroughly after handling. Before use, the user must review the complete Safety Data Sheet, which has been sent via email to your institution.

WARRANTY AND LIMITATION OF REMEDY
Buyer agrees to purchase the material subject to Cayman's Terms and Conditions. Complete Terms and Conditions including Warranty and Limitation of Liability information can be found on our website.

Copyright Cayman Chemical Company, 04/08/2026

CAYMAN CHEMICAL
1180 EAST ELLSWORTH RD
ANN ARBOR, MI 48108 · USA
PHONE: [800] 364-9897
[734] 971-3335
FAX: [734] 971-3640
CUSTSERV@CAYMANCHEM.COM
WWW.CAYMANCHEM.COM

PRODUCT INFORMATION



Description

Human Placental Tissue (Basal Plate; Normal) - FFPE Block is a formalin-fixed, paraffin-embedded (FFPE) block containing normal human placenta basal plate tissue from a female donor with no diagnosis of disease. The basal plate of the placenta is the maternal-facing outer layer of the placenta, which can undergo histological changes due to pregnancy complications, such as preeclampsia.¹ The tissue contained in this FFPE block was fixed in 10% neutral buffered formalin (NBF) for 24 hours and embedded in immunohistochemistry-grade paraffin. The target FFPE size is 1-2 x 1-2 x 0.5 cm, but this may vary significantly based on the size of the tissue sample. Human Placental Tissue (Basal Plate; Normal) - FFPE Block can be used for immunohistochemistry (IHC) applications.

Human tissue products should always be properly handled in accordance with safe handling procedures. Disposal should follow state and federal regulations and is the responsibility of the customer.

Reference

1. Richani, K., Romero, R., Soto, E., *et al.* Genetic origin and proportion of basal plate surface-lining cells in normal and abnormal pregnancies. *Hum. Pathol.* **38(2)**, 269-275 (2007).

CAYMAN CHEMICAL
1180 EAST ELLSWORTH RD
ANN ARBOR, MI 48108 · USA
PHONE: [800] 364-9897
[734] 971-3335
FAX: [734] 971-3640
CUSTSERV@CAYMANCHEM.COM
WWW.CAYMANCHEM.COM