

PRODUCT INFORMATION



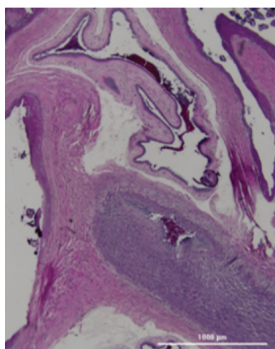
Human Placental Tissue (Gestational Diabetes) - FFPE Block

Item No. 45234

Overview and Properties

Contents:	Formalin-fixed paraffin-embedded (FFPE) human placental tissue (gestational diabetes)
Synonym:	Human Placental Tissue (Gestational Diabetes) - Formalin-Fixed, Paraffin-Embedded Block
Storage:	4°C
Stability:	≥3 years
Source:	batch specific
Species:	Human
Sex:	Female
Sampling Age:	batch specific
Tissue:	Placenta
Diagnosis:	Gestational Diabetes
Donor:	Single donor
Form:	Solid tissue
Applications:	Immunohistochemistry (IHC)

Image



Immunohistochemistry (IHC). Hematoxylin and eosin (H&E) image taken from representative Human Placental Tissue (Gestational Diabetes) - FFPE Block (Item No. 45234) (4X).

Description

Human Placental Tissue (Gestational Diabetes) - FFPE Block is a formalin-fixed, paraffin-embedded (FFPE) block containing human placental tissue from a female donor with gestational diabetes. Gestational diabetes is a condition induced by placental secretion of diabetogenic hormones, which leads to the inability to overcome insulin resistance, and is associated with increased risks of preeclampsia, shoulder dystocia, and high birth weight.¹ Gestational diabetes can induce both macro- and microscopic changes to the placenta including increased size, volume, and weight, immaturity of chorionic villi, and the presence of syncytial nodules.² The tissue contained in this FFPE block was fixed in 10% neutral buffered formalin (NBF) for 24 hours and embedded in immunohistochemistry-grade paraffin. The target FFPE size is 1-2 x 1-2 x 0.5 cm, but this may vary significantly based on the size of the tissue sample. Cayman's Human Placental Tissue (Gestational Diabetes) - FFPE Block can be used for immunohistochemistry (IHC) applications.

Human tissue products should always be properly handled in accordance with safe handling procedures. Disposal should follow state and federal regulations and is the responsibility of the customer.

WARNING
THIS PRODUCT IS FOR RESEARCH ONLY - NOT FOR HUMAN OR VETERINARY DIAGNOSTIC OR THERAPEUTIC USE.

SAFETY DATA
This material should be considered hazardous until further information becomes available. Do not ingest, inhale, get in eyes, on skin, or on clothing. Wash thoroughly after handling. Before use, the user must review the complete Safety Data Sheet, which has been sent via email to your institution.

WARRANTY AND LIMITATION OF REMEDY
Buyer agrees to purchase the material subject to Cayman's Terms and Conditions. Complete Terms and Conditions including Warranty and Limitation of Liability information can be found on our website.

Copyright Cayman Chemical Company, 04/09/2026

CAYMAN CHEMICAL
1180 EAST ELLSWORTH RD
ANN ARBOR, MI 48108 · USA
PHONE: [800] 364-9897
[734] 971-3335
FAX: [734] 971-3640
CUSTSERV@CAYMANCHEM.COM
WWW.CAYMANCHEM.COM

PRODUCT INFORMATION



References

1. Mack, L.R. and Tomich, P.G. Gestational diabetes diagnosis, classification, and clinical care. *Obstet. Gynecol. Clin. North Am.* **44(2)**, 207-217 (2017).
2. Edu, A., Teodorescu, C., Dobjanschi, C.G., *et al.* Placenta changes in pregnancy with gestational diabetes. *Rom. J. Morphol. Embryol.* **57(2)**, 507-512 (2016).

CAYMAN CHEMICAL
1180 EAST ELLSWORTH RD
ANN ARBOR, MI 48108 · USA
PHONE: [800] 364-9897
[734] 971-3335
FAX: [734] 971-3640
CUSTSERV@CAYMANCHEM.COM
WWW.CAYMANCHEM.COM