

# PRODUCT INFORMATION



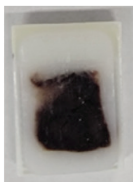
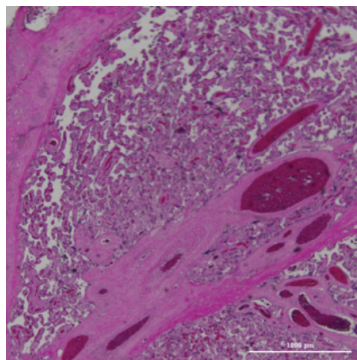
## Human Placental Tissue (Preeclampsia) - FFPE Block

Item No. 45233

### Overview and Properties

<b>Contents:</b>	Formalin-fixed paraffin-embedded (FFPE) human placental tissue
<b>Synonym:</b>	Human Placental Tissue (Preeclampsia) - Formalin-Fixed, Paraffin-Embedded Block
<b>Storage:</b>	4°C
<b>Stability:</b>	≥3 years
<b>Source:</b>	<b>batch specific</b>
<b>Species:</b>	Human
<b>Sex:</b>	Female
<b>Sampling Age:</b>	<b>batch specific</b>
<b>Tissue:</b>	Placenta
<b>Diagnosis:</b>	Preeclampsia
<b>Donor:</b>	Single donor
<b>Form:</b>	Solid tissue
<b>Applications:</b>	Immunohistochemistry (IHC)

### Image



**Immunohistochemistry (IHC).** Hematoxylin and eosin (H&E) image taken from representative Human Placental Tissue (Preeclampsia) - FFPE Block (Item No. 45233) (4X).

### Description

Human Placental Tissue (Preeclampsia) - FFPE Block is a formalin-fixed, paraffin-embedded (FFPE) block containing human placental tissue from a female donor diagnosed with preeclampsia. Preeclampsia is a hypertensive disorder of pregnancy associated with histopathological changes to the placenta, including villous hypoplasia and infarction, increased syncytial nodules, and decidual arteriolopathy.<sup>1</sup> The tissue contained in this FFPE block was fixed in 10% neutral buffered formalin (NBF) for 24 hours and embedded in immunohistochemistry-grade paraffin. The target FFPE size is 1-2 x 1-2 x 0.5 cm, but this may vary significantly based on the size of the tissue sample. Cayman's Human Placental Tissue (Preeclampsia) - FFPE Block can be used for immunohistochemistry (IHC) applications.

*Human tissue products should always be properly handled in accordance with safe handling procedures. Disposal should follow state and federal regulations and is the responsibility of the customer.*

### Reference

1. Pietro, L., Guida, J.P.S., Nobrega, G.M., *et al.* *Rev. Bras. Ginecol. Obstet.* **43**(7), 560-569 (2021).

**WARNING**  
THIS PRODUCT IS FOR RESEARCH ONLY - NOT FOR HUMAN OR VETERINARY DIAGNOSTIC OR THERAPEUTIC USE.

**SAFETY DATA**  
This material should be considered hazardous until further information becomes available. Do not ingest, inhale, get in eyes, on skin, or on clothing. Wash thoroughly after handling. Before use, the user must review the complete Safety Data Sheet, which has been sent via email to your institution.

**WARRANTY AND LIMITATION OF REMEDY**  
Buyer agrees to purchase the material subject to Cayman's Terms and Conditions. Complete Terms and Conditions including Warranty and Limitation of Liability information can be found on our website.

Copyright Cayman Chemical Company, 04/09/2026

**CAYMAN CHEMICAL**  
1180 EAST ELLSWORTH RD  
ANN ARBOR, MI 48108 · USA  
PHONE: [800] 364-9897  
[734] 971-3335  
FAX: [734] 971-3640  
CUSTSERV@CAYMANCHEM.COM  
WWW.CAYMANCHEM.COM