

# PRODUCT INFORMATION



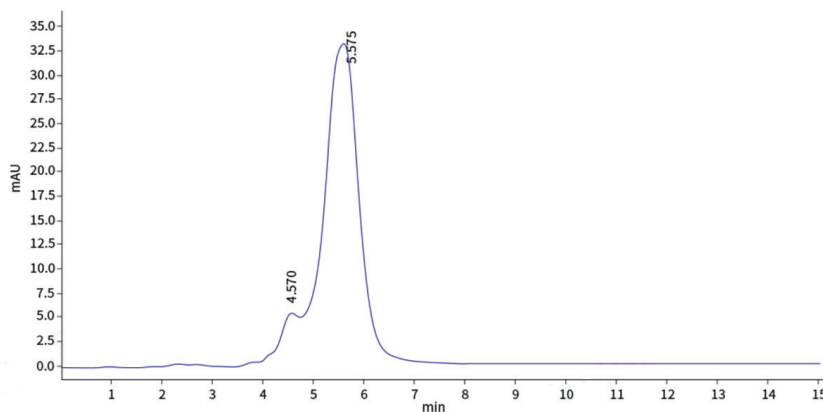
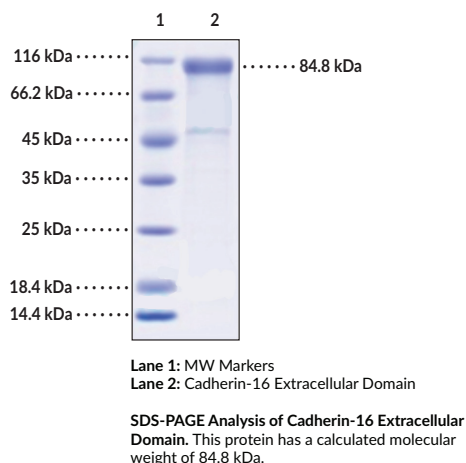
## Cadherin-16 Extracellular Domain (human, recombinant)

Item No. 44200

### Overview and Properties

**Synonyms:** CDH16, Kidney-specific Cadherin, Ksp-Cadherin  
**Source:** Active recombinant C-terminal His-tagged human CDH16 extracellular domain expressed in HEK293 cells  
**Amino Acids:** 19-768  
**Uniprot No.:** O75309  
**Molecular Weight:** 84.8 kDa  
**Storage:** -80°C (as supplied)  
**Stability:** ≥1 year  
**Purity:** ≥85% estimated by SDS-PAGE  
**Supplied in:** Lyophilized from sterile 50 mM Tris with 100 mM sodium chloride and calcium chloride, pH 8.0  
**Endotoxin Testing:** <1.0 EU/μg, determined by the LAL endotoxin assay  
**Protein Concentration:** *batch specific* mg/ml  
**Activity:** *batch specific* U/ml  
**Specific Activity:** *batch specific* U/mg  
*Information represents the product specifications. Batch specific analytical results are provided on each certificate of analysis.*

### Images



**WARNING**  
THIS PRODUCT IS FOR RESEARCH ONLY - NOT FOR HUMAN OR VETERINARY DIAGNOSTIC OR THERAPEUTIC USE.

**SAFETY DATA**  
This material should be considered hazardous until further information becomes available. Do not ingest, inhale, get in eyes, on skin, or on clothing. Wash thoroughly after handling. Before use, the user must review the complete Safety Data Sheet, which has been sent via email to your institution.

**WARRANTY AND LIMITATION OF REMEDY**  
Buyer agrees to purchase the material subject to Cayman's Terms and Conditions. Complete Terms and Conditions including Warranty and Limitation of Liability information can be found on our website.

Copyright Cayman Chemical Company, 12/16/2025

**CAYMAN CHEMICAL**  
1180 EAST ELLSWORTH RD  
ANN ARBOR, MI 48108 · USA  
PHONE: [800] 364-9897  
[734] 971-3335  
FAX: [734] 971-3640  
CUSTSERV@CAYMANCHEM.COM  
WWW.CAYMANCHEM.COM

# PRODUCT INFORMATION



## Description

---

Cadherin-16 (CDH16) is a cell adhesion molecule with roles in embryonic development and cell growth.<sup>1,2</sup> It is composed of seven extracellular cadherin repeats, a transmembrane domain, and a short cytoplasmic domain.<sup>2</sup> CDH16 is expressed primarily in renal and thyroid tissues and localized to the plasma membrane. It promotes the formation of renal tubuli and the development of thyroid follicles during development, and its expression persists at high levels in the adult kidney and follicular cells of the adult thyroid gland.<sup>3</sup> Reduced kidney and thyroid levels of CDH16 are associated with the development of cancer in those tissues. Urinary levels of CDH16 are decreased in patients with sepsis-induced acute kidney injury.<sup>4</sup> Cayman's Cadherin-16 Extracellular Domain (human, recombinant) protein can be used in binding assay and Western blot (WB) applications. This protein consists of 779 amino acids, has a calculated molecular weight of 84.8 kDa, and a predicted N-terminus of Lys19 after signal peptide cleavage.

## References

---

1. Lennartz, M., Csomós, H., Bernreuther, C., *et al.* Reduced CDH16 expression is linked to poor prognosis in clear cell renal cell carcinoma 16. *Urol. Oncol.* **40(7)**, 348.e1-348.e8 (2022).
2. Wendeler, M.W., Jung, R., Himmelbauer, H., *et al.* Unique gene structure and paralogy define the 7D-cadherin family. *Cell. Mol. Life Sci.* **63(13)**, 1564-1573 (2006).
3. Lennartz, M., Csomós, H., Chirico, V., *et al.* Cadherin-16 (CDH16) immunohistochemistry: A useful diagnostic tool for renal cell carcinoma and papillary carcinomas of the thyroid. *Sci. Rep.* **13(1)**, 12917 (2023).
4. Li, Y., Long, J., Chen, J., *et al.* Analysis of spatiotemporal urine protein dynamics to identify new biomarkers for sepsis-induced acute kidney injury. *Front. Physiol.* **11**, 139 (2020).

CAYMAN CHEMICAL  
1180 EAST ELLSWORTH RD  
ANN ARBOR, MI 48108 · USA  
PHONE: [800] 364-9897  
[734] 971-3335  
FAX: [734] 971-3640  
CUSTSERV@CAYMANCHEM.COM  
WWW.CAYMANCHEM.COM