

PRODUCT INFORMATION



[pS³⁴⁵]-Chk1 (340-349) (human, mouse, rat, porcine)
Item No. 44041

Formal Name: N-L-glutaminyglycyl-L-isoleucyl-L-seryl-L-phenylalanyl-O-phosphono-L-seryl-L-glutaminy-L-prolyl-L-threonyl-L-cysteine

Synonyms: H-Gln-Gly-Ile-Ser-Phe-Ser(PO₃H₂)-Gln-Pro-Thr-Cys-OH, [pS³⁴⁵]-Checkpoint Kinase 1 (340-349)

Peptide Sequence: QGISF-pS-QPTC-OH

MF: C₄₅H₇₁N₁₂O₁₉PS

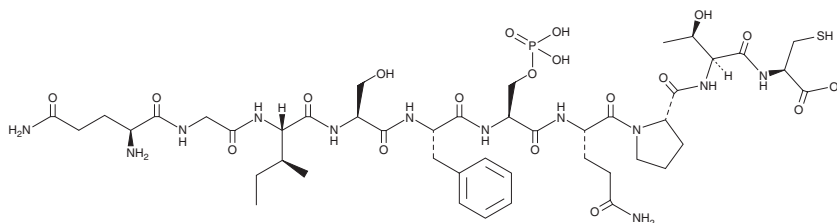
FW: 1,147.2

Purity: ≥95%

Supplied as: A solid

Storage: -20°C

Stability: ≥4 years



Information represents the product specifications. Batch specific analytical results are provided on each certificate of analysis.

Laboratory Procedures

[pS³⁴⁵]-Chk1 (340-349) (human, mouse, rat, porcine) is supplied as a solid. A stock solution may be made by dissolving the [pS³⁴⁵]-Chk1 (340-349) (human, mouse, rat, porcine) in the solvent of choice, which should be purged with an inert gas. [pS³⁴⁵]-Chk1 (340-349) (human, mouse, rat, porcine) is slightly soluble (0.1-1 mg/ml) in DMSO.

[pS³⁴⁵]-Chk1 (340-349) (human, mouse, rat, porcine) is slightly soluble in aqueous solutions. To enhance aqueous solubility, dilute the organic solvent solution into aqueous buffers or isotonic saline. If performing biological experiments, ensure the residual amount of organic solvent is insignificant, since organic solvents may have physiological effects at low concentrations. We do not recommend storing the aqueous solution for more than one day.

Description

[pS³⁴⁵]-Chk1 (340-349) is a peptide fragment of the serine/threonine kinase checkpoint kinase 1 (Chk1) that is phosphorylated at the serine in position 345 (Ser³⁴⁵). Phosphorylation at Ser³⁴⁵ and Ser³¹⁷ is involved in activation of Chk1, which results in cell cycle arrest at the S or G₂/M phase.¹

Reference

1. Neizer-Ashun, F. and Bhattacharya, R. Reality CHEK: Understanding the biology and clinical potential of CHK1. *Cancer Lett.* **497**, 202-211 (2021).

WARNING

THIS PRODUCT IS FOR RESEARCH ONLY - NOT FOR HUMAN OR VETERINARY DIAGNOSTIC OR THERAPEUTIC USE.

SAFETY DATA

This material should be considered hazardous until further information becomes available. Do not ingest, inhale, get in eyes, on skin, or on clothing. Wash thoroughly after handling. Before use, the user must review the complete Safety Data Sheet, which has been sent via email to your institution.

WARRANTY AND LIMITATION OF REMEDY

Buyer agrees to purchase the material subject to Cayman's Terms and Conditions. Complete Terms and Conditions including Warranty and Limitation of Liability information can be found on our website.

Copyright Cayman Chemical Company, 10/08/2025

CAYMAN CHEMICAL

1180 EAST ELLSWORTH RD
ANN ARBOR, MI 48108 · USA

PHONE: [800] 364-9897

[734] 971-3335

FAX: [734] 971-3640

CUSTSERV@CAYMANCHEM.COM
WWW.CAYMANCHEM.COM