

# PRODUCT INFORMATION

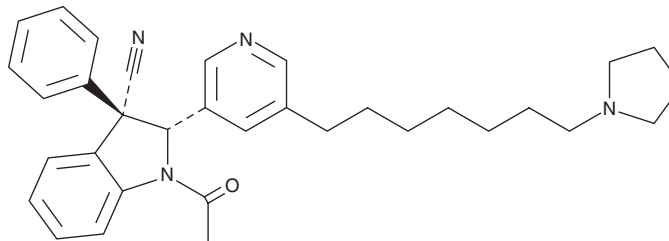


## KDM2A/7A-IN-1

Item No. 43730

**CAS Registry No.:** 2169272-46-0  
**Formal Name:** (2S,3S)-1-acetyl-2,3-dihydro-3-phenyl-2-[5-[7-(1-pyrrolidinyl)heptyl]-3-pyridinyl]-1H-indole-3-carbonitrile  
**Synonyms:** KDM2A/7A Inhibitor 1, Lysine demethylase 2A/7A-IN-1, Lysine demethylase 2A/7A Inhibitor 1

**MF:** C<sub>33</sub>H<sub>38</sub>N<sub>4</sub>O  
**FW:** 506.7  
**Purity:** ≥98%  
**Supplied as:** A solid  
**Storage:** -20°C  
**Stability:** ≥4 years



Information represents the product specifications. Batch specific analytical results are provided on each certificate of analysis.

### Laboratory Procedures

KDM2A/7A-IN-1 is supplied as a solid. A stock solution may be made by dissolving the KDM2A/7A-IN-1 in the solvent of choice, which should be purged with an inert gas. KDM2A/7A-IN-1 is sparingly soluble (1-10 mg/ml) in ethanol and DMSO.

Further dilutions of the stock solution into aqueous buffers or isotonic saline should be made prior to performing biological experiments. Ensure that the residual amount of organic solvent is insignificant, since organic solvents may have physiological effects at low concentrations. Organic solvent-free aqueous solutions of KDM2A/7A-IN-1 can be prepared by directly dissolving the solid in aqueous buffers. KDM2A/7A-IN-1 is slightly soluble (0.1-1 mg/ml) in PBS (pH 7.2). We do not recommend storing the aqueous solution for more than one day.

### Description

KDM2A/7A-IN-1 is an inhibitor of lysine demethylase 2A (KDM2A) and KDM7A (IC<sub>50</sub>s = 0.16 and 0.19 μM, respectively).<sup>1</sup> It is selective for KDM2A and -7A over KDM3A (IC<sub>50</sub> = 39 μM), KDM4A, -4C, and -4D (IC<sub>50</sub>s = 639, 430, and 321 μM, respectively), KDM5B and -C (IC<sub>50</sub>s = 17 and 16 μM, respectively), KDM6B (IC<sub>50</sub> = 20 μM), and KDM7B (IC<sub>50</sub> = 34 μM). KDM2A/7A-IN-1 (1 and 10 μM) inhibits KDM2A-mediated demethylation of dimethylated histone H3 lysine 36 (H3K36me2) in HeLa cells.

### Reference

- Gerken, P.A., Wolstenhulme, J.R., Tumber, A., *et al.* Discovery of a highly selective cell-active inhibitor of the histone lysine demethylases KDM2/7. *Angew Chem. Int. Ed.* **56**(49), 15555-15559 (2017).

#### WARNING

THIS PRODUCT IS FOR RESEARCH ONLY - NOT FOR HUMAN OR VETERINARY DIAGNOSTIC OR THERAPEUTIC USE.

#### SAFETY DATA

This material should be considered hazardous until further information becomes available. Do not ingest, inhale, get in eyes, on skin, or on clothing. Wash thoroughly after handling. Before use, the user must review the complete Safety Data Sheet, which has been sent via email to your institution.

#### WARRANTY AND LIMITATION OF REMEDY

Buyer agrees to purchase the material subject to Cayman's Terms and Conditions. Complete Terms and Conditions including Warranty and Limitation of Liability information can be found on our website.

Copyright Cayman Chemical Company, 08/11/2025

#### CAYMAN CHEMICAL

1180 EAST ELLSWORTH RD  
ANN ARBOR, MI 48108 · USA

**PHONE:** [800] 364-9897  
[734] 971-3335

**FAX:** [734] 971-3640

CUSTSERV@CAYMANCHEM.COM  
WWW.CAYMANCHEM.COM