

PRODUCT INFORMATION



LAIR-2 (human) Matched Antibody Pair (Clones RM479/RM480)

Item No. 42871

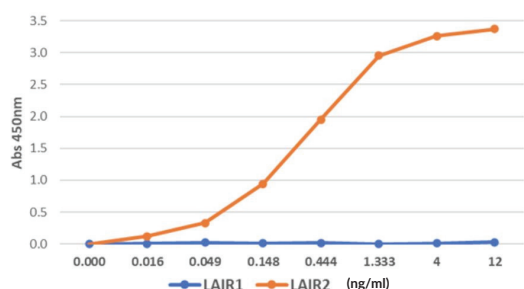
Overview and Properties

Antibody	Item Name	Storage Buffer	Clone	Applications*
Capture	LAIR-2 (human) Rabbit Monoclonal Antibody (Clone RM479)	100 µg at 1.0 mg/ml in PBS with 50% glycerol and 0.09% sodium azide	RM479	Sandwich ELISA: 50-200 ng/well
Detection	LAIR-1/2 (human) Rabbit Monoclonal Antibody - Biotinylated (Clone RM480)	25 µg at 1.0 mg/ml in PBS with 50% glycerol, 1% BSA, and 0.09% sodium azide	RM480	Sandwich ELISA: 0.1-0.5 µg/ml

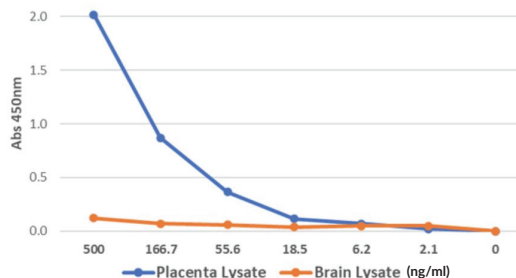
*Other applications were not tested, therefore optimal working concentration/dilution should be determined empirically.

Contents: Contains protein A-affinity purified monoclonal antibodies
Synonyms: CD306, Leukocyte-associated Immunoglobulin-like Receptor 2
Cross Reactivity: (+) LAIR-2; (-) LAIR-1
Species Reactivity: (+) Human
Form: Liquid
Storage: -20°C (as supplied)
Stability: ≥1 year
Host: Rabbit

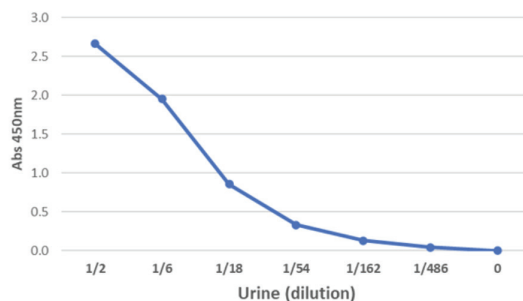
Images



LAIR-2 (human) Matched Antibody Pair (Clones RM479/RM480) specifically detects LAIR-2. Results are shown for a sandwich ELISA using LAIR-2 (human) Rabbit Monoclonal Antibody (Clone RM479) (50 ng/well at 1 µg/ml) as the capture antibody with LAIR-1/2 (human) Rabbit Monoclonal Antibody - Biotinylated (Clone RM480) (0.2 µg/ml) as the detection antibody, followed by HRP-conjugated streptavidin.



Detection of LAIR-2 in human placenta and brain tissue lysates. Results are shown for a sandwich ELISA using LAIR-2 (human) Rabbit Monoclonal Antibody (Clone RM479) (50 ng/well at 1 µg/ml) as the capture antibody with LAIR-1/2 (human) Rabbit Monoclonal Antibody - Biotinylated (Clone RM480) (0.2 µg/ml) as the detection antibody, followed by HRP-conjugated streptavidin.



Detection of LAIR-2 in human urine. Results are shown for a sandwich ELISA using LAIR-2 (human) Rabbit Monoclonal Antibody (Clone RM479) (50 ng/well at 1 µg/ml) as the capture antibody with LAIR-1/2 (human) Rabbit Monoclonal Antibody - Biotinylated (Clone RM480) (0.2 µg/ml) as the detection antibody, followed by HRP-conjugated streptavidin.

WARNING
 THIS PRODUCT IS FOR RESEARCH ONLY - NOT FOR HUMAN OR VETERINARY DIAGNOSTIC OR THERAPEUTIC USE.

SAFETY DATA
 This material should be considered hazardous until further information becomes available. Do not ingest, inhale, get in eyes, on skin, or on clothing. Wash thoroughly after handling. Before use, the user must review the complete Safety Data Sheet, which has been sent via email to your institution.

WARRANTY AND LIMITATION OF REMEDY
 Buyer agrees to purchase the material subject to Cayman's Terms and Conditions. Complete Terms and Conditions including Warranty and Limitation of Liability information can be found on our website.

Copyright Cayman Chemical Company, 05/14/2026

CAYMAN CHEMICAL
 1180 EAST ELLSWORTH RD
 ANN ARBOR, MI 48108 · USA
 PHONE: [800] 364-9897
 [734] 971-3335
 FAX: [734] 971-3640
 CUSTSERV@CAYMANCHEM.COM
 WWW.CAYMANCHEM.COM

PRODUCT INFORMATION



Description

Leukocyte-associated immunoglobulin-like receptor 2 (LAIR-2) is a soluble homolog of the membrane-bound inhibitory immune receptor LAIR-1.¹ LAIR-2, which is composed of a single immunoglobulin-like domain, binds to collagen and inhibits the LAIR-1-collagen interaction and subsequent activation of immunocytes.^{1,2} It is produced by human peripheral blood mononuclear cells (PBMCs), monocytic and T cell lines, and activated CD4⁺ T cells.^{2,3} LAIR-2 fused to the Fc region of human IgG1 inhibits collagen-induced platelet aggregation, adhesion of platelets to collagen-coated coverslips, and binding of collagen to von Willebrand factor (VWF) and glycoprotein VI (GpVI).⁴ Elevated levels of LAIR-2 have been found in the urine of pregnant women, the synovial fluid of patients with rheumatoid arthritis, and sera from patients with autoimmune thyroid diseases.^{1,2} Cayman's LAIR-2 (human) Matched Antibody Pair (Clones RM479/RM480) contains LAIR-2 (human) Rabbit Monoclonal Antibody (Clone RM479) as a capture antibody and LAIR-1 and LAIR-2 (human) Rabbit Monoclonal Antibody - Biotinylated (Clone RM480) as a detection antibody. This antibody pair can be used for sandwich ELISAs or other sandwich assays for the specific detection of LAIR-2 in human samples.

References

1. Simone, R., Pesce, G., Antola, P., *et al.* Serum LAIR-2 is increased in autoimmune thyroid diseases. *PLoS One* **8(5)**, e63282 (2013).
2. Lebbink, R.J., van den Berg, M.C.W., de Ruiter, T., *et al.* The soluble leukocyte-associated Ig-like receptor (LAIR)-2 antagonizes the collagen/LAIR-1 inhibitory immune interaction. *J. Immunol.* **180(3)**, 1662-1669 (2008).
3. Olde Nordkamp, M.J.M., van Roon, J.A.G., Douwes, M., *et al.* Enhanced secretion of leukocyte-associated immunoglobulin-like receptor 2 (LAIR-2) and soluble LAIR-1 in rheumatoid arthritis: LAIR-2 is a more efficient antagonist of the LAIR-1-collagen inhibitory interaction than is soluble LAIR-1. *Arthritis Rheum.* **63(12)**, 3749-3757 (2011).
4. Lenting, P.J., Westerlaken, G.H.A., Denis, C.V., *et al.* Efficient inhibition of collagen-induced platelet activation and adhesion by LAIR-2, a soluble Ig-like receptor family member. *PLoS One* **5(8)**, e12174 (2010).

CAYMAN CHEMICAL
1180 EAST ELLSWORTH RD
ANN ARBOR, MI 48108 · USA
PHONE: [800] 364-9897
[734] 971-3335
FAX: [734] 971-3640
CUSTSERV@CAYMANCHEM.COM
WWW.CAYMANCHEM.COM