

PRODUCT INFORMATION



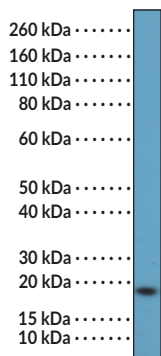
GCDFP-15 Rabbit Monoclonal Antibody (Clone RM504)

Item No. 42855

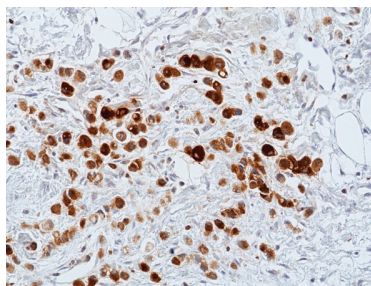
Overview and Properties

Contents:	This vial contains 100 µl of protein A-affinity purified monoclonal antibody.
Synonyms:	EP-GP, Extraparotid Glycoprotein, gp17, Gross Cystic Disease Fluid Protein 15, Prolactin-inducible Protein, PIP, SABP, Secretory Actin-binding Protein
Immunogen:	A peptide corresponding to the N-terminus of human GCDFP-15
Cross Reactivity:	(+) GCDFP-15
Species Reactivity:	(+) Human
Form:	Liquid
Storage:	-20°C (as supplied)
Stability:	≥1 year
Storage Buffer:	PBS with 50% glycerol, 1% BSA, and 0.09% sodium azide
Clone:	RM504
Host:	Rabbit
Isotype:	IgG
Applications:	Immunohistochemistry (IHC) and Western blot (WB); the recommended starting dilution is 1:100-1:200 for IHC and 1:1000-1:2,000 for WB. Other applications were not tested, therefore optimal working concentration/dilution should be determined empirically.

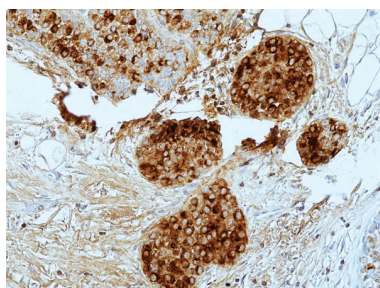
Images



WB of T47D cell lysates using GCDFP-15 Rabbit Monoclonal Antibody (Clone RM504) at a 1:1,000 dilution.



Immunohistochemical staining of formalin-fixed and paraffin-embedded human breast lobular cancer tissue using GCDFP-15 Rabbit Monoclonal Antibody (Clone RM504) at a dilution of 1:100.



Immunohistochemical staining of formalin-fixed and paraffin-embedded human breast ductal cancer tissue using GCDFP-15 Rabbit Monoclonal Antibody (Clone RM504) at a dilution of 1:100.

WARNING
THIS PRODUCT IS FOR RESEARCH ONLY - NOT FOR HUMAN OR VETERINARY DIAGNOSTIC OR THERAPEUTIC USE.

SAFETY DATA
This material should be considered hazardous until further information becomes available. Do not ingest, inhale, get in eyes, on skin, or on clothing. Wash thoroughly after handling. Before use, the user must review the complete Safety Data Sheet, which has been sent via email to your institution.

WARRANTY AND LIMITATION OF REMEDY
Buyer agrees to purchase the material subject to Cayman's Terms and Conditions. Complete Terms and Conditions including Warranty and Limitation of Liability information can be found on our website.

Copyright Cayman Chemical Company, 05/13/2025

CAYMAN CHEMICAL
1180 EAST ELLSWORTH RD
ANN ARBOR, MI 48108 · USA
PHONE: [800] 364-9897
[734] 971-3335
FAX: [734] 971-3640
CUSTSERV@CAYMANCHEM.COM
WWW.CAYMANCHEM.COM

PRODUCT INFORMATION



Description

Gross cystic disease fluid protein 15 (GCDFP-15) is a secretory glycoprotein whose expression is induced by hormones, including prolactin, growth hormone, and dihydrotestosterone.¹⁻³ It is composed of an immunoglobulin fold and has aspartyl protease activity.^{1,2} GCDFP-15 is expressed in apocrine, eccrine, salivary, and sweat glands, among others.⁴ It is involved in host defense against bacteria, innate and adaptive immunity, fertilization, and tumorigenesis.^{2,5} Decreased protein levels of GCDFP-15 are associated with increased tumor size and node-positivity in patients with infiltrating apocrine breast carcinomas.⁶ Saliva levels of GCDFP-15 are decreased in patients with primary Sjögren's syndrome.⁷ Cayman's GCDFP-15 Rabbit Monoclonal Antibody (Clone RM504) can be used for immunohistochemistry (IHC) and Western blot (WB) applications.

References

1. Hassan, M.I., Waheed, A., Yadav, S., *et al.* Prolactin inducible protein in cancer, fertility and immunoregulation: Structure, function and its clinical implications. *Cell. Mol. Life Sci.* **66(3)**, 447-459 (2009).
2. Sharif, R., Bak-Nielsen, S., Hjortdal, J., *et al.* Pathogenesis of keratoconus: The intriguing therapeutic potential of Prolactin-inducible protein. *Prog. Retin. Eye Res.* **67**, 150-167 (2018).
3. Murphy, L.C., Tsuyuki, D., Myal, Y., *et al.* Isolation and sequencing of a cDNA clone for a prolactin-inducible protein (PIP). Regulation of PIP gene expression in the human breast cancer cell line, T-47D. *J. Biol. Chem.* **262(31)**, 15236-15241 (1987).
4. Viacava, P., Naccarato, A.G., and Bevilacqua, G. Spectrum of GCDFP-15 expression in human fetal and adult normal tissues. *Virchows Arch.* **432(3)**, 255-260 (1998).
5. Ihedioha, O.C., Shiu, R.P.C., Uzonna, J.E., *et al.* Prolactin-inducible protein: From breast cancer biomarker to immune modulator—novel insights from knockout mice. *DNA Cell Biol.* **35(10)**, 537-541 (2016).
6. Honma, N., Takubo, K., Akiyama, F., *et al.* Expression of GCDFP-15 and AR decreases in larger or node-positive apocrine carcinomas of the breast. *Histopathology* **47(2)**, 195-201 (2005).
7. Gallo, A., Martini, D., Sernissi, F., *et al.* Gross cystic disease fluid protein-15(GCDFP-15)/prolactin-inducible protein (PIP) as functional salivary biomarker for primary Sjögren's syndrome. *J. Genet. Syndr. Gene Ther.* **4**, 10 (2013).

CAYMAN CHEMICAL
1180 EAST ELLSWORTH RD
ANN ARBOR, MI 48108 · USA
PHONE: [800] 364-9897
[734] 971-3335
FAX: [734] 971-3640
CUSTSERV@CAYMANCHEM.COM
WWW.CAYMANCHEM.COM