

# PRODUCT INFORMATION



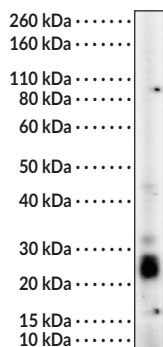
## MGBA Rabbit Monoclonal Antibody (Clone RM519)

Item No. 42785

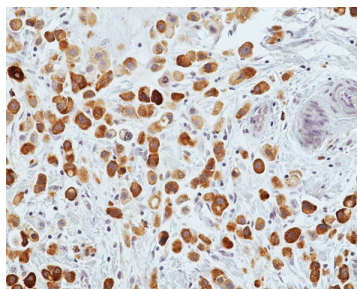
### Overview and Properties

<b>Contents:</b>	This vial contains 100 µl of protein A-affinity purified monoclonal antibody.
<b>Synonyms:</b>	Mammaglobin-1, Mammaglobin-A, MGB1, MGBA, SCGB2A2, Secretoglobin Family 2A Member 2
<b>Immunogen:</b>	Peptide corresponding to residues near the N-terminus of human MGBA
<b>Cross Reactivity:</b>	(+) MGBA
<b>Species Reactivity:</b>	(+) Human
<b>Form:</b>	Liquid
<b>Storage:</b>	-20°C (as supplied)
<b>Stability:</b>	≥1 year
<b>Storage Buffer:</b>	PBS with 50% glycerol, 1% BSA, and 0.09% sodium azide
<b>Clone:</b>	RM519
<b>Host:</b>	Rabbit
<b>Isotype:</b>	IgG
<b>Applications:</b>	Immunohistochemistry (IHC) and Western blot (WB); the recommended starting dilution is 1:100-1:500 for IHC and 1:250-1:1,000 for WB. Other applications were not tested, therefore optimal working concentration/dilution should be determined empirically.

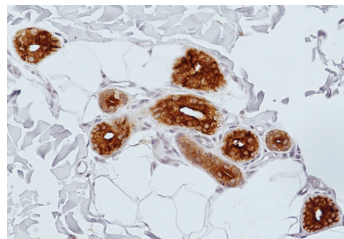
### Images



WB of human breast cancer tissue lysates using MGBA Rabbit Monoclonal Antibody (Clone RM519) at a dilution of 1:500.



Immunohistochemical staining of formalin-fixed and paraffin-embedded human breast lobular cancer tissue using MGBA Rabbit Monoclonal Antibody (Clone RM519) at a dilution of 1:100 for one hour at room temperature.



Immunohistochemical staining of formalin-fixed and paraffin-embedded human eccrine sweat glands of skin tissue using MGBA Rabbit Monoclonal Antibody (Clone RM519) at a dilution of 1:500 for one hour at room temperature.

**WARNING**  
THIS PRODUCT IS FOR RESEARCH ONLY - NOT FOR HUMAN OR VETERINARY DIAGNOSTIC OR THERAPEUTIC USE.

**SAFETY DATA**  
This material should be considered hazardous until further information becomes available. Do not ingest, inhale, get in eyes, on skin, or on clothing. Wash thoroughly after handling. Before use, the user must review the complete Safety Data Sheet, which has been sent via email to your institution.

**WARRANTY AND LIMITATION OF REMEDY**  
Buyer agrees to purchase the material subject to Cayman's Terms and Conditions. Complete Terms and Conditions including Warranty and Limitation of Liability information can be found on our website.

Copyright Cayman Chemical Company, 10/09/2025

**CAYMAN CHEMICAL**  
1180 EAST ELLSWORTH RD  
ANN ARBOR, MI 48108 · USA  
PHONE: [800] 364-9897  
[734] 971-3335  
FAX: [734] 971-3640  
CUSTSERV@CAYMANCHEM.COM  
WWW.CAYMANCHEM.COM

# PRODUCT INFORMATION



## Description

---

Mammaglobin-A (MGBA) is a member of the uteroglobin/Clara cell protein family that is expressed exclusively in the mammary gland.<sup>1-3</sup> Decreased expression of *SCGB2A2*, the gene encoding MGBA, is associated with decreased proliferation, migration, and invasion of breast cancer cells *in vitro*.<sup>3</sup> Overexpression of *SCGB2A2* is found in most breast cancers, including non-invasive, invasive, and metastatic breast cancers, and has been used as a biomarker for the detection of circulating breast cancer cells and breast cancer metastases.<sup>2,3</sup> Cayman's MGBA Rabbit Monoclonal Antibody (Clone RM519) can be used for immunohistochemistry (IHC) and Western blot (WB) applications.

## References

---

1. Gorbokon, N., Timm, P., Dum, D., *et al.* Mammaglobin-A expression is highly specific for tumors derived from the breast, the female genital tract, and the salivary gland. *Diagnostics (Basel)* **13(6)**, 1202 (2023).
2. Tiriveedhi, V., Sarma, N.J., Subramanian, V., *et al.* Identification of HLA-A24-restricted CD8+ cytotoxic T-cell epitopes derived from mammaglobin-A, a human breast cancer-associated antigen. *Hum. Immunol.* **73(1)**, 11-16 (2012).
3. Picot, N., Guerrette, R., Beaugard, A.-P., *et al.* Mammaglobin 1 promotes breast cancer malignancy and confers sensitivity to anticancer drugs. *Mol. Carcinog.* **55(7)**, 1150-1162 (2016).

CAYMAN CHEMICAL  
1180 EAST ELLSWORTH RD  
ANN ARBOR, MI 48108 · USA  
PHONE: [800] 364-9897  
[734] 971-3335  
FAX: [734] 971-3640  
CUSTSERV@CAYMANCHEM.COM  
WWW.CAYMANCHEM.COM