

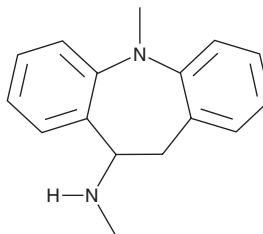
# PRODUCT INFORMATION



## Metopramine

Item No. 42033

**CAS Registry No.:** 21730-16-5  
**Formal Name:** 10,11-dihydro-N,5-dimethyl-5H-dibenz[b,f]azepin-10-amine  
**Synonym:** RP 19560  
**MF:** C<sub>16</sub>H<sub>18</sub>N<sub>2</sub>  
**FW:** 238.3  
**Purity:** ≥98%  
**Supplied as:** A solution in ethanol  
**Storage:** -20°C  
**Stability:** ≥4 years



Information represents the product specifications. Batch specific analytical results are provided on each certificate of analysis.

### Description

Metopramine is an antidepressant.<sup>1</sup> It decreases action potential amplitude and maximal signal velocity and increases conduction time in isolated dog Purkinje fibers when used at a concentration of 10 μM. Metopramine (10 mg/kg) reduces ethanol consumption in ethanol-preferring rats.<sup>2</sup> It inhibits reperfusion-induced increases in ventricular arrhythmias in a rat model of myocardial ischemia-reperfusion injury induced by ligation of the left anterior descending (LAD) artery when used at a concentration of 175 μM.<sup>3</sup> Metopramine (10 mg/kg) increases the latency to tail withdrawal in the tail-flick test and inhibits phenylbenzoquinone-induced writhing in mice when administered at a dose of 10 mg/kg.<sup>4</sup> Formulations containing metopramine have been used in the treatment of depression.

### References

1. Bril, A., Rochette, L., Bertrand, J.P., *et al.* Electrophysiological effects of some antidepressant drugs on canine cardiac Purkinje fibres. *Cardiovasc. Res.* **21(11)**, 783-789 (1987).
2. Daoust, M., Saligaut, C., Chadelaud, M., *et al.* Attenuation by antidepressant drugs of alcohol intake in rats. *Alcohol* **1(5)**, 379-383 (1984).
3. Bril, A. and Rochette, L. Comparison of the effect of antidepressant drugs on arrhythmias in the isolated rat heart subjected to myocardial ischaemia and reperfusion. *Pharmacol. Toxicol.* **60(4)**, 249-254 (1987).
4. Michael-Titus, A. and Costentin, J. Analgesic effects of metopramine and evidence against the involvement of endogenous enkephalins in the analgesia induced by tricyclic antidepressants. *Pain* **31(3)**, 391-400 (1987).

#### WARNING

THIS PRODUCT IS FOR RESEARCH ONLY - NOT FOR HUMAN OR VETERINARY DIAGNOSTIC OR THERAPEUTIC USE.

#### SAFETY DATA

This material should be considered hazardous until further information becomes available. Do not ingest, inhale, get in eyes, on skin, or on clothing. Wash thoroughly after handling. Before use, the user must review the [complete](#) Safety Data Sheet, which has been sent via email to your institution.

#### WARRANTY AND LIMITATION OF REMEDY

Buyer agrees to purchase the material subject to Cayman's Terms and Conditions. Complete Terms and Conditions including Warranty and Limitation of Liability information can be found on our website.

Copyright Cayman Chemical Company, 05/12/2026

#### CAYMAN CHEMICAL

1180 EAST ELLSWORTH RD  
ANN ARBOR, MI 48108 · USA

**PHONE:** [800] 364-9897

[734] 971-3335

**FAX:** [734] 971-3640

CUSTSERV@CAYMANCHEM.COM

WWW.CAYMANCHEM.COM