

PRODUCT INFORMATION



GLP-1 (7-15) (human, mouse, rat, porcine, bovine, ovine) (trifluoroacetate salt)

Item No. 41256

Formal Name: L-histidyl-L-alanyl-L- α -glutamylglycyl-L-threonyl-L-phenylalanyl-L-threonyl-L-seryl-L-aspartic acid, trifluoroacetate salt

Synonym: Glucagon-like Peptide 1 (7-15)

Peptide Sequence: HAEGTFTSD-OH

MF: $C_{40}H_{57}N_{11}O_{17} \cdot XCF_3COOH$

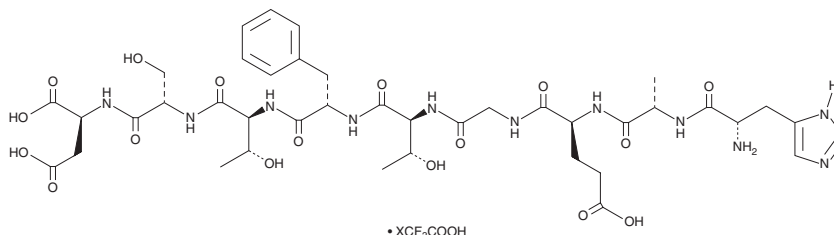
FW: 964.0

Purity: $\geq 98\%$

Supplied as: A solid

Storage: $-20^{\circ}C$

Stability: ≥ 4 years



Information represents the product specifications. Batch specific analytical results are provided on each certificate of analysis.

Laboratory Procedures

GLP-1 (7-15) (human, mouse, rat, porcine, bovine, ovine) (trifluoroacetate salt) is supplied as a solid. A stock solution may be made by dissolving the GLP-1 (7-15) (human, mouse, rat, porcine, bovine, ovine) (trifluoroacetate salt) in DMSO.

Further dilutions of the stock solution into aqueous buffers or isotonic saline should be made prior to performing biological experiments. Ensure that the residual amount of organic solvent is insignificant, since organic solvents may have physiological effects at low concentrations. Organic solvent-free aqueous solutions of GLP-1 (7-15) (human, mouse, rat, porcine, bovine, ovine) (trifluoroacetate salt) can be prepared by directly dissolving the solid in aqueous buffers. GLP-1 (7-15) (human, mouse, rat, porcine, bovine, ovine) (trifluoroacetate salt) is sparingly soluble (1-10 mg/ml) in PBS (pH 7.2). We do not recommend storing the aqueous solution for more than one day.

Description

Glucagon-like peptide 1 (GLP-1) (7-15) is a peptide fragment of the endogenous incretin hormone GLP-1 (Item No. 24460).¹ GLP-1 (7-15) is formed by cleavage of the peptide bond between Asp¹⁵ and Val¹⁶ in GLP-1 by neprilysin.

Reference

1. Manandhar, B. and Ahn, J.-M. Glucagon-like peptide-1 (GLP-1) analogs: Recent advances, new possibilities, and therapeutic implications. *J. Med. Chem.* **58**(3), 1020-1037 (2015).

WARNING

THIS PRODUCT IS FOR RESEARCH ONLY - NOT FOR HUMAN OR VETERINARY DIAGNOSTIC OR THERAPEUTIC USE.

SAFETY DATA

This material should be considered hazardous until further information becomes available. Do not ingest, inhale, get in eyes, on skin, or on clothing. Wash thoroughly after handling. Before use, the user must review the [complete](#) Safety Data Sheet, which has been sent via email to your institution.

WARRANTY AND LIMITATION OF REMEDY

Buyer agrees to purchase the material subject to Cayman's Terms and Conditions. Complete Terms and Conditions including Warranty and Limitation of Liability information can be found on our website.

Copyright Cayman Chemical Company, 08/05/2024

CAYMAN CHEMICAL

1180 EAST ELLSWORTH RD
ANN ARBOR, MI 48108 · USA

PHONE: [800] 364-9897
[734] 971-3335

FAX: [734] 971-3640

CUSTSERV@CAYMANCHEM.COM
WWW.CAYMANCHEM.COM