

PRODUCT INFORMATION



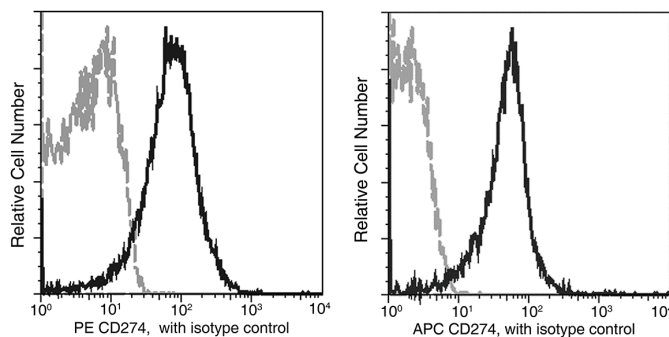
PD-L1/CD274 Rabbit Monoclonal Antibody (PE)

Item No. 37065

Overview and Properties

Contents: This vial contains 50 or 200 μ l of protein A-affinity purified monoclonal antibody.
Synonyms: B7-H1, CD274, Programmed Cell Death1 Ligand 1
Immunogen: Recombinant mouse PD-L1
Cross Reactivity: (+) PD-L1
Species Reactivity: (+) Mouse
Form: Liquid
Storage: 2-8°C (as supplied)
Stability: \geq 1 year
Storage Buffer: PBS with 0.5% BSA and 0.09% sodium azide
Host: Rabbit
Isotype: IgG
Applications: Flow cytometry (FC); the recommended starting dilution is 1:25-1:100. Other applications were not tested, therefore optimal working concentration/dilution should be determined empirically.

Image



Analysis of CD274 expression on spleen lymphocytes.

WARNING
THIS PRODUCT IS FOR RESEARCH ONLY - NOT FOR HUMAN OR VETERINARY DIAGNOSTIC OR THERAPEUTIC USE.

SAFETY DATA
This material should be considered hazardous until further information becomes available. Do not ingest, inhale, get in eyes, on skin, or on clothing. Wash thoroughly after handling. Before use, the user must review the complete Safety Data Sheet, which has been sent via email to your institution.

WARRANTY AND LIMITATION OF REMEDY
Buyer agrees to purchase the material subject to Cayman's Terms and Conditions. Complete Terms and Conditions including Warranty and Limitation of Liability information can be found on our website.

Copyright Cayman Chemical Company, 07/11/2022

CAYMAN CHEMICAL
1180 EAST ELLSWORTH RD
ANN ARBOR, MI 48108 · USA
PHONE: [800] 364-9897
[734] 971-3335
FAX: [734] 971-3640
CUSTSERV@CAYMANCHEM.COM
WWW.CAYMANCHEM.COM

PRODUCT INFORMATION



Description

Programmed cell death 1 ligand 1 (PD-L1), also known as B7-H1 or CD274, is a B7 family protein that is involved in regulation and attenuation of the adaptive immune response and peripheral T cell tolerance.¹⁻⁴ It is a 290-amino acid type I transmembrane protein encoded by *CD274* in humans and is composed of a 239-amino acid extracellular domain consisting of a signal peptide, an IgV-like domain, and an IgC-like domain, a transmembrane domain, and a cytoplasmic tail.^{1,5} PD-L1 is constitutively expressed in T and B cells, dendritic cells, macrophages, and regulatory T cells (Tregs), as well as a variety of nonhematopoietic cells, and is upregulated by IFN- γ .³ Binding of PD-L1 to its receptor, programmed cell death protein 1 (PD-1), suppresses T cell proliferation, migration, and cytokine production.^{2,4} PD-L1 is also aberrantly expressed in a variety of tumor cells, and expression of PD-L1 in tumor tissue is associated with poor prognosis in patients with renal cell carcinoma.⁶⁻⁸ Formulations containing PD-L1 blocking antibodies have been used in the treatment of a variety of cancers. Cayman's PD-L1/CD274 Rabbit Monoclonal Antibody (PE) is composed of a PD-L1/CD274 monoclonal antibody conjugated to phycoerythrin (PE) and can be used for flow cytometry.

References

1. Fabrizio, F.P., Trombetta, D., Rossi, A., *et al.* Gene code CD274/PD-L1: From molecular basis toward cancer immunotherapy. *Ther. Adv. Med. Oncol.* **10**, (2018).
2. Riley, J.L. PD-1 signaling in primary T cells. *Immunol. Rev.* **229(1)**, 114-125 (2009).
3. del Rio, M.L., Buhler, L., Gibbons, C.E., *et al.* PD-1/PD-L1, PD-1/PD-L2, and other co-inhibitory signaling pathways in transplantation. *Transpl. Int.* **21(11)**, 1015-1028 (2008).
4. Akinleye, A. and Rasool, Z. Immune checkpoint inhibitors of PD-L1 as cancer therapeutics. *J. Hematol. Oncol.* **12(1)**, 92 (2019).
5. Keir, M.E., Butte, M.J., Freeman, G.J., *et al.* PD-1 and its ligands in tolerance and immunity. *Annu. Rev. Immunol.* **26**, 677-704 (2008).
6. Ji, M., Liu, Y., Li, Q., *et al.* PD-1/PD-L1 pathway in non-small-cell lung cancer and its relation with EGFR mutation. *J. Transl. Med.* **13**, 5 (2015).
7. Thompson, R.H., Dong, H., Lohse, C.M., *et al.* PD-1 is expressed by tumor-infiltrating immune cells and is associated with poor outcome for patients with renal cell carcinoma. *Clin. Cancer Res.* **13(6)**, 1757-1761 (2007).
8. Thompson, R.H., Kuntz, S.M., Leibovich, B.C., *et al.* Tumor B7-H1 is associated with poor prognosis in renal cell carcinoma patients with long-term follow-up. *Cancer Res.* **66(7)**, 3381-3385 (2006).

CAYMAN CHEMICAL
1180 EAST ELLSWORTH RD
ANN ARBOR, MI 48108 · USA
PHONE: [800] 364-9897
[734] 971-3335
FAX: [734] 971-3640
CUSTSERV@CAYMANCHEM.COM
WWW.CAYMANCHEM.COM