

# PRODUCT INFORMATION



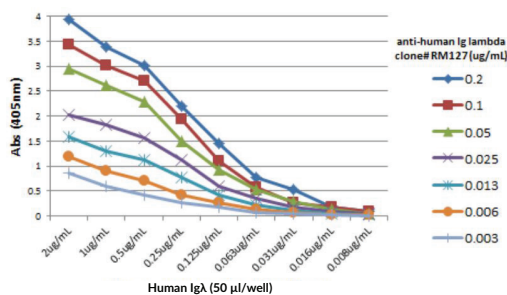
## Igλ Light Chain (human) Rabbit Monoclonal Antibody - Biotinylated (RM127)

Item No. 32366

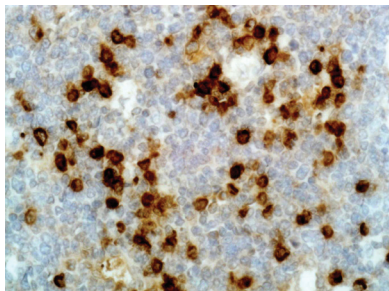
### Overview and Properties

<b>Contents:</b>	This vial contains 50 µg of protein A-affinity purified monoclonal antibody.
<b>Synonym:</b>	Immunoglobulin λ Light Chain
<b>Immunogen:</b>	Human IgG
<b>Cross Reactivity:</b>	(+) Igλ light chain; (-) κ light chain; (-) Goat, mouse, rat IgG
<b>Species Reactivity:</b>	(+) Human
<b>Form:</b>	Liquid
<b>Storage:</b>	-20°C (as supplied)
<b>Stability:</b>	≥1 year
<b>Storage Buffer:</b>	PBS, with 50% glycerol, 1% BSA, and 0.09% sodium azide
<b>Concentration:</b>	1.0 mg/ml
<b>Clone:</b>	RM127
<b>Host:</b>	Rabbit
<b>Isotype:</b>	IgG
<b>Applications:</b>	ELISA, Flow Cytometry (FC), Immunocytochemistry (ICC), and Immunohistochemical (IHC); the recommended starting concentration is 0.05-0.2 µg/ml for ELISA, 0.2-2 µg/ml for FC, and 0.5-2 µg/ml for ICC and IHC. Other applications were not tested, therefore optimal working concentration/dilution should be determined empirically.

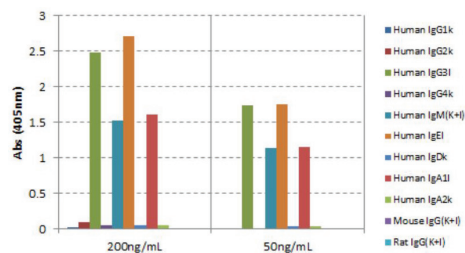
### Images



A Titer ELISA using Igλ Light Chain (human) Rabbit Monoclonal Antibody - Biotinylated (RM127). The plate was coated with different amounts of human Igλ. A serial dilution of Igλ Light Chain (human) Rabbit Monoclonal Antibody - Biotinylated (RM127) was used as the primary antibody and an alkaline phosphatase-conjugated anti-rabbit IgG was used as the secondary antibody.



Immunohistochemical staining of human tonsil tissue using Igλ Light Chain (human) Rabbit Monoclonal Antibody - Biotinylated (RM127).



Igλ Light Chain (human) Rabbit Monoclonal Antibody - Biotinylated (RM127)

ELISA of Human Immunoglobulins (Igs). Igλ Light Chain (human) Rabbit Monoclonal Antibody - Biotinylated (RM127) reacts only to the Igλ light chain of human Igs and not to the κ light chain, mouse IgG, rat IgG, or goat IgG. The plate was coated with 50 ng/well of different Igs. 200 or 50 ng/ml of Igλ Light Chain (human) Rabbit Monoclonal Antibody - Biotinylated (RM127) was used as the primary antibody and an alkaline phosphatase-conjugated anti-rabbit IgG was used as the secondary antibody.

**WARNING**  
THIS PRODUCT IS FOR RESEARCH ONLY - NOT FOR HUMAN OR VETERINARY DIAGNOSTIC OR THERAPEUTIC USE.

**SAFETY DATA**  
This material should be considered hazardous until further information becomes available. Do not ingest, inhale, get in eyes, on skin, or on clothing. Wash thoroughly after handling. Before use, the user must review the complete Safety Data Sheet, which has been sent via email to your institution.

**WARRANTY AND LIMITATION OF REMEDY**  
Buyer agrees to purchase the material subject to Cayman's Terms and Conditions. Complete Terms and Conditions including Warranty and Limitation of Liability information can be found on our website.

Copyright Cayman Chemical Company, 02/29/2024

**CAYMAN CHEMICAL**  
1180 EAST ELLSWORTH RD  
ANN ARBOR, MI 48108 · USA  
PHONE: [800] 364-9897  
[734] 971-3335  
FAX: [734] 971-3640  
CUSTSERV@CAYMANCHEM.COM  
WWW.CAYMANCHEM.COM

# PRODUCT INFORMATION



## Description

---

Ig $\lambda$  light chain is one type of light chain found in immunoglobulins, which are part of the immunoglobulin superfamily of glycoproteins that plays a central role in the adaptive immune response.<sup>1</sup> Immunoglobulins are produced by B cells and later secreted by plasma cells as antibodies.<sup>2</sup> They are composed of two heavy chains of approximately 50 kDa each and two light chains of approximately 25 kDa each.<sup>1</sup> The heavy chains are linked together by disulfide bonds to form an Fc region and also combine with the light chains to form the Fab region, which mediate receptor and antigen binding, respectively.<sup>3</sup> Mammalian immunoglobulins contain either Ig $\kappa$  or Ig $\lambda$  light chains each of which are composed of a constant and variable domain.<sup>2,4</sup> The ratio of Ig $\kappa$  to Ig $\lambda$  light chain containing antibodies varies between species, with ratios of 20:1, 2:1, and 1:20 in mice, humans, and cattle, respectively. In systemic amyloidosis, a clonal population of plasma cells produces light chains that form amyloid fibrils, and the type of free light chains (FLCs) produced is predominantly Ig $\lambda$  with an Ig $\kappa$  to Ig $\lambda$  ratio of 1:3 or, in amyloidosis patients with nephrotic-range proteinuria, 1:5.<sup>5</sup> Cayman's Ig $\lambda$  Light Chain (human) Rabbit Monoclonal Antibody - Biotinylated (RM127) can be used for ELISA, flow cytometry (FC), immunocytochemistry (ICC), and immunohistochemistry (IHC) applications. The antibody recognizes the Ig $\lambda$  light chain from human samples.

## References

---

1. Schroeder, H.W., Jr. and Cavicini, L. Structure and function of immunoglobulins. *J. Allergy Clin. Immunol.* **125**(2 Suppl. 2), S41-S52 (2010).
2. Esparvarinha, M., Nickho, H., Mohammadi, H., *et al.* The role of free kappa and lambda light chains in the pathogenesis and treatment of inflammatory diseases. *Biomed. Pharmacother.* **91**, 632-644 (2017).
3. Vaillant A.A.J. and Ramphul K. Immunoglobulin. In: StatPearls [Internet]. Treasure Island (FL): StatPearls Publishing (2020). Available from: <https://www.ncbi.nlm.nih.gov/books/NBK513460/>
4. Janeway, C.A., Jr., Travers, P., Walport, M., *et al.* Antigen recognition by B-cell and T-cell receptors. *Immunobiology: The Immune System in Health and Disease*. Lawrence, E., editor. 6<sup>th</sup> edition, Garland Science Publishing (2004).
5. Gertz, M.A., Lacy, M.Q., and Dispenzieri, A. Immunoglobulin light chain amyloidosis and the kidney. *Kidney Int.* **61**(1), 1-9 (2002).

CAYMAN CHEMICAL  
1180 EAST ELLSWORTH RD  
ANN ARBOR, MI 48108 · USA  
PHONE: [800] 364-9897  
[734] 971-3335  
FAX: [734] 971-3640  
CUSTSERV@CAYMANCHEM.COM  
WWW.CAYMANCHEM.COM