

# PRODUCT INFORMATION



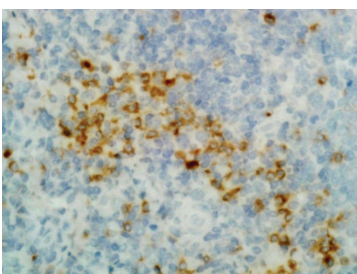
## $\gamma$ Heavy Chain (human) Rabbit Monoclonal Antibody - Biotinylated (RM116)

Item No. 32364

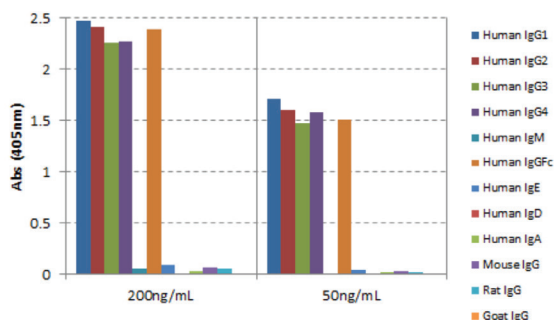
### Overview and Properties

<b>Contents:</b>	This vial contains 50 $\mu$ g of protein A-affinity purified monoclonal antibody.
<b>Synonyms:</b>	IgG Heavy Chain, Immunoglobulin G Heavy Chain
<b>Immunogen:</b>	Human IgG
<b>Cross Reactivity:</b>	(+) IgG1, IgG2, IgG3, IgG4; (-) Human IgM, IgA, IgD, IgE; (-) Goat, mouse, rat IgG
<b>Species Reactivity:</b>	(+) Human
<b>Form:</b>	Liquid
<b>Storage:</b>	-20°C (as supplied)
<b>Stability:</b>	$\geq$ 1 year
<b>Storage Buffer:</b>	PBS with 50% glycerol, 1% BSA, and 0.09% sodium azide
<b>Concentration:</b>	1 mg/ml
<b>Clone:</b>	RM116
<b>Host:</b>	Rabbit
<b>Isotype:</b>	IgG
<b>Applications:</b>	ELISA, immunocytochemistry (ICC), and immunohistochemistry (IHC); the recommended starting concentration is 0.05-1 $\mu$ g/ml for ELISA and 0.5-2 $\mu$ g/ml for ICC and IHC. Other applications were not tested, therefore optimal working concentration/dilution should be determined empirically.

### Images

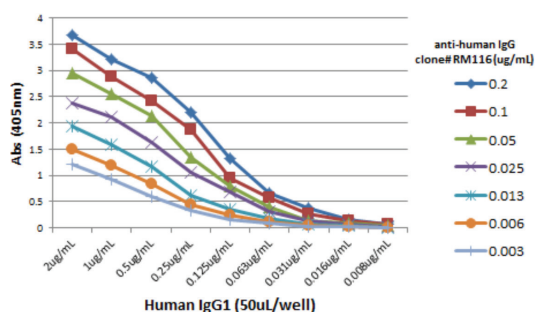


Immunohistochemical staining of human tonsil tissue using  $\gamma$  Heavy Chain (human) Rabbit Monoclonal Antibody - Biotinylated (RM116).



$\gamma$  Heavy Chain (human) Rabbit Monoclonal Antibody - Biotinylated (RM116)

ELISA of human immunoglobulins (Igs).  $\gamma$  Heavy Chain (human) Rabbit Monoclonal Antibody - Biotinylated (RM116) reacts to the  $\gamma$ 1,  $\gamma$ 2,  $\gamma$ 3, and  $\gamma$ 4 heavy chain of human IgGs, and the Fc of human IgG. No cross reactivity with other human heavy chains, mouse IgG, rat IgG, or goat IgG. The plate was coated with 50 ng/well of different IgGs.  $\gamma$  Heavy Chain (human) Rabbit Monoclonal Antibody - Biotinylated (RM116) was used as the primary antibody and an alkaline phosphatase-conjugated anti-rabbit IgG was used as the secondary antibody.



A Titer ELISA using  $\gamma$  Heavy Chain (human) Rabbit Monoclonal Antibody - Biotinylated (RM116). The plate was coated with different amounts of human IgG1. A serial dilution of  $\gamma$  Heavy Chain (human) Rabbit Monoclonal Antibody - Biotinylated (RM116) was used as the primary antibody and an alkaline phosphatase-conjugated anti-rabbit IgG was used as the secondary antibody.

**WARNING**  
THIS PRODUCT IS FOR RESEARCH ONLY - NOT FOR HUMAN OR VETERINARY DIAGNOSTIC OR THERAPEUTIC USE.

**SAFETY DATA**  
This material should be considered hazardous until further information becomes available. Do not ingest, inhale, get in eyes, on skin, or on clothing. Wash thoroughly after handling. Before use, the user must review the complete Safety Data Sheet, which has been sent via email to your institution.

**WARRANTY AND LIMITATION OF REMEDY**  
Buyer agrees to purchase the material subject to Cayman's Terms and Conditions. Complete Terms and Conditions including Warranty and Limitation of Liability information can be found on our website.

Copyright Cayman Chemical Company, 02/29/2024

**CAYMAN CHEMICAL**  
1180 EAST ELLSWORTH RD  
ANN ARBOR, MI 48108 · USA  
PHONE: [800] 364-9897  
[734] 971-3335  
FAX: [734] 971-3640  
CUSTSERV@CAYMANCHEM.COM  
WWW.CAYMANCHEM.COM

# PRODUCT INFORMATION



## Description

---

Immunoglobulin G (IgG) is a member of the immunoglobulin superfamily of glycoproteins that plays a central role in the adaptive immune response.<sup>1,2</sup> It is produced by B cells and later secreted by plasma cells and is the most abundant circulating antibody in rabbit serum. IgG consists of two identical heavy chains, also known as  $\gamma$  heavy chains, of approximately 50 kDa each and two identical light chains of approximately 25 kDa each.<sup>1</sup> The heavy chains are linked together by a single disulfide bond to form an Fc region and also combine with the light chains through additional disulfide bonds to form the Fab region, which mediate receptor and antigen binding, respectively. IgG is produced following IgM class-switching in response to infection and is involved in numerous humoral host defense responses, including antibody-dependent cell-mediated cytotoxicity (ADCC), toxin neutralization, and pathogen opsonization.<sup>1,3,4</sup>  $\gamma$  Heavy chains are truncated and unable to associate with IgG light chains in patients with the rare disease  $\gamma$  heavy chain disease.<sup>5</sup> Cayman's  $\gamma$  Heavy Chain (human) Rabbit Monoclonal Antibody - Biotinylated (RM116) can be used for ELISA, immunocytochemistry (ICC), and immunohistochemistry (IHC) applications. The antibody recognizes the Fc region of the  $\gamma$  heavy chain from human samples.

## References

---

1. Weber, J., Peng, H., and Rader, C. From rabbit antibody repertoires to rabbit monoclonal antibodies. *Exp. Mol. Med.* **49(3)**, e305 (2017).
2. Rayner, L.E., Kadkhodayi-Kholghi, N., Heenan, R.K., *et al.* The solution structure of rabbit IgG accounts for its interactions with the Fc receptor and complement C1q and its conformational stability. *J. Mol. Biol.* **425(3)**, 506-523 (2013).
3. Vidarsson, G., Dekkers, G., and Rispen, T. IgG subclasses and allotypes: From structure to effector functions. *Front. Immunol.* **5**, 520 (2014).
4. Williams, R.C., Jr., Osterland, C.K., Margherita, S., *et al.* Studies of biologic and serologic activities of rabbit-IgG antibody depleted of carbohydrate residues. *J. Immunol.* **111(6)**, 1690-1698 (1973).
5. Bieliauskas, S., Tubbs, R.R., Bacon, C.M., *et al.* Gamma heavy-chain disease: Defining the spectrum of associated lymphoproliferative disorders through analysis of 13 cases. *Am. J. Surg. Pathol.* **36(4)**, 534-543 (2012).

CAYMAN CHEMICAL  
1180 EAST ELLSWORTH RD  
ANN ARBOR, MI 48108 · USA  
PHONE: [800] 364-9897  
[734] 971-3335  
FAX: [734] 971-3640  
CUSTSERV@CAYMANCHEM.COM  
WWW.CAYMANCHEM.COM