

PRODUCT INFORMATION



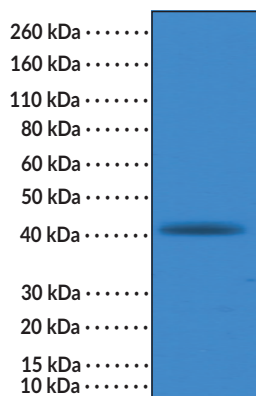
TTF1 Rabbit Monoclonal Antibody (Clone RM373)

Item No. 32298

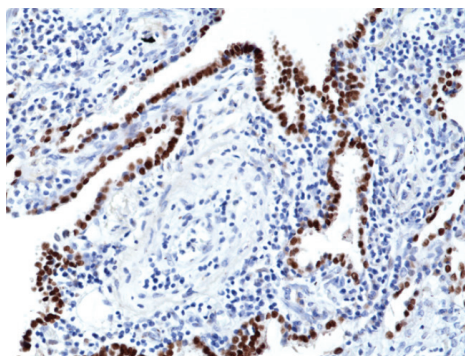
Overview and Properties

Contents:	This vial contains 100 µl of protein A-affinity purified monoclonal antibody.
Synonyms:	NK2 homeobox 1, NKX2-1, Thyroid Transcription Factor-1
Immunogen:	Peptide corresponding to a region near the N-terminal region of human TTF1
Cross Reactivity:	(+) TTF1
Species Reactivity:	(+) Human
Form:	Liquid
Storage:	-20°C (as supplied)
Stability:	≥1 year
Storage Buffer:	PBS, with 50% glycerol, 1% BSA, and 0.09% sodium azide
Clone:	RM373
Host:	Rabbit
Isotype:	IgG
Applications:	Immunohistochemistry (IHC) and Western blot (WB); the recommended starting dilution for IHC is 1:500-1:1,000 and 1:1,000-1:20,000 for WB. Other applications were not tested, therefore optimal working concentration/dilution should be determined empirically.

Images



WB of TT cell lysate using TTF1 Rabbit Monoclonal Antibody (Clone RM373) at a 1:20,000 dilution.



Immunohistochemical staining of formalin-fixed and paraffin-embedded human lung cancer tissue using TTF1 Rabbit Monoclonal Antibody (Clone RM373) at a 1:500 dilution.

WARNING
THIS PRODUCT IS FOR RESEARCH ONLY - NOT FOR HUMAN OR VETERINARY DIAGNOSTIC OR THERAPEUTIC USE.

SAFETY DATA
This material should be considered hazardous until further information becomes available. Do not ingest, inhale, get in eyes, on skin, or on clothing. Wash thoroughly after handling. Before use, the user must review the complete Safety Data Sheet, which has been sent via email to your institution.

WARRANTY AND LIMITATION OF REMEDY
Buyer agrees to purchase the material subject to Cayman's Terms and Conditions. Complete Terms and Conditions including Warranty and Limitation of Liability information can be found on our website.

Copyright Cayman Chemical Company, 02/20/2024

CAYMAN CHEMICAL
1180 EAST ELLSWORTH RD
ANN ARBOR, MI 48108 · USA
PHONE: [800] 364-9897
[734] 971-3335
FAX: [734] 971-3640
CUSTSERV@CAYMANCHEM.COM
WWW.CAYMANCHEM.COM

PRODUCT INFORMATION



Description

Thyroid transcription factor-1 (TTF1) is a member of the NKX2 transcription factor family.^{1,3} It is expressed in the thyroid, pulmonary epithelium, and hypothalamus, and localized to the nucleus, where it functions as a lineage regulator inducing tissue-specific gene expression.^{2,3} *TTF1* is expressed in the majority of lung adenocarcinomas, acting as a lineage survival oncogene.¹ However, it also functions as a tumor suppressor and is positively correlated with favorable outcomes in patients with non-small cell lung cancer (NSCLC).^{1,2} *TTF1* is expressed in some breast and ovarian cancers and is correlated with high grade and poorer disease-specific survival, respectively.² Cayman's TTF1 Rabbit Monoclonal Antibody (Clone RM373) can be used for immunohistochemistry (IHC) and Western blot (WB) applications.

References

1. Yoshimura, K., Inoue, Y., Mori, K., *et al.* Distinct prognostic roles and heterogeneity of TTF1 copy number and TTF1 protein expression in non-small cell lung cancer. *Genes Chromosomes Cancer* **56(7)**, 570-581 (2007).
2. Phelps, C.A., Lai, S.-C., and Mu, D. Roles of thyroid transcription factor 1 in lung cancer biology. *Vitman. Horm.* **106**, 517-544 (2008).
3. Aversa, S. and Bellan, C. TTF1 expression in pulmonary metastatic rectal adenocarcinoma. *Case Rep. Gastrointest. Med.* 6405125 (2018).

CAYMAN CHEMICAL
1180 EAST ELLSWORTH RD
ANN ARBOR, MI 48108 · USA
PHONE: [800] 364-9897
[734] 971-3335
FAX: [734] 971-3640
CUSTSERV@CAYMANCHEM.COM
WWW.CAYMANCHEM.COM