

PRODUCT INFORMATION



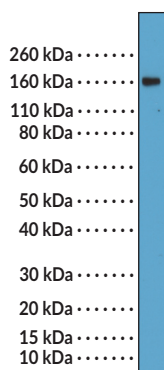
CR2/CD21 (C-Term) Rabbit Monoclonal Antibody (Clone RM372)

Item No. 32297

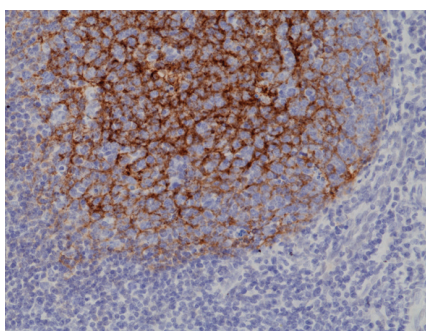
Overview and Properties

Contents:	This vial contains 100 µl of protein A-affinity purified monoclonal antibody.
Synonyms:	Complement Receptor 2, Epstein Barr Virus Receptor, Complement C3d Receptor, C3DR
Immunogen:	Peptide from the C-terminal region of human CR2
Cross Reactivity:	(+) CR2
Species Reactivity:	(+) Human
Form:	Liquid
Storage:	-20°C (as supplied)
Stability:	≥1 year
Storage Buffer:	PBS with 50% glycerol, 1% BSA, and 0.09% sodium azide
Clone:	RM372
Host:	Rabbit
Isotype:	IgG
Applications:	Immunohistochemistry (IHC) and Western blot (WB); the recommended starting dilution is 1:500-1:1,000 for IHC and 1:200-1:1,000 for WB. Other applications were not tested, therefore optimal working concentration/dilution should be determined empirically.

Images



WB of Daudi lysates using CR2/CD21 (C-Term) Rabbit Monoclonal Antibody (Clone RM372) at a dilution of 1:400.



Immunohistochemical staining of formalin-fixed and paraffin-embedded human tonsil tissue using CR2/CD21 (C-Term) Rabbit Monoclonal Antibody (Clone RM372) at a 1:1,000 dilution.

WARNING
THIS PRODUCT IS FOR RESEARCH ONLY - NOT FOR HUMAN OR VETERINARY DIAGNOSTIC OR THERAPEUTIC USE.

SAFETY DATA
This material should be considered hazardous until further information becomes available. Do not ingest, inhale, get in eyes, on skin, or on clothing. Wash thoroughly after handling. Before use, the user must review the complete Safety Data Sheet, which has been sent via email to your institution.

WARRANTY AND LIMITATION OF REMEDY
Buyer agrees to purchase the material subject to Cayman's Terms and Conditions. Complete Terms and Conditions including Warranty and Limitation of Liability information can be found on our website.

Copyright Cayman Chemical Company, 02/20/2024

CAYMAN CHEMICAL
1180 EAST ELLSWORTH RD
ANN ARBOR, MI 48108 · USA
PHONE: [800] 364-9897
[734] 971-3335
FAX: [734] 971-3640
CUSTSERV@CAYMANCHEM.COM
WWW.CAYMANCHEM.COM

PRODUCT INFORMATION



Description

Complement receptor 2 (CR2), also known as CD21, is a type I transmembrane glycoprotein with a role in the complement system.¹ It is composed of an extracellular domain that contains 15 or 16 short consensus repeats involved in stabilizing the triple-loop domain conformation, a transmembrane domain, and a short cytoplasmic domain containing one PKC and one tyrosine kinase phosphorylation site. CR2 is primarily expressed on mature B cells and follicular dendritic cells (FDCs) but is also expressed on the pharyngeal and cervical epithelium, thymocytes, and a subset of peripheral T cells.^{1,2} It forms a complex with CD19, TAPA-1, and Leu-19 on the surface of B cells, where it acts as a ligand-fixing subunit that binds surface-fixed cleavage fragments of complement protein C3 on antigen presenting cells to amplify antigen-induced B cell activation and antibody production.¹ CR2 is also a receptor for Epstein Barr Virus. B cell levels of CR2 are decreased in patients with systemic lupus erythematosus (SLE).³ Cayman's CR2/CD21 (C-Term) Rabbit Monoclonal Antibody (Clone RM372) can be used for immunohistochemistry (IHC) and Western blot (WB) applications.

References

1. Frémeaux-Bacchi, V., Kolb, J.-P., Rakotobé, S., *et al.* Functional properties of soluble CD21. *Immunopharmacology* **42(1-3)**, 31-37 (1999).
2. Jacobson, A.C. and Weis, J.H. Comparative functional evolution of human and mouse CR1 and CR2. *J. Immunol.* **181(5)**, 2953-2959 (2008).
3. Boackle, S.A. Complement and autoimmunity. *Biomed. Pharmacother.* **57**, 269-273 (2003).

CAYMAN CHEMICAL
1180 EAST ELLSWORTH RD
ANN ARBOR, MI 48108 · USA
PHONE: [800] 364-9897
[734] 971-3335
FAX: [734] 971-3640
CUSTSERV@CAYMANCHEM.COM
WWW.CAYMANCHEM.COM