

PRODUCT INFORMATION



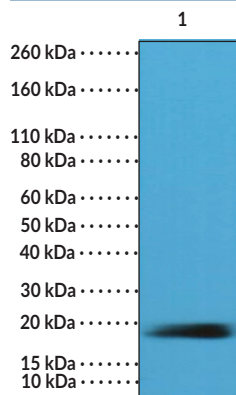
Caveolin-1 (C-Term) Rabbit Monoclonal Antibody (Clone RM325)

Item No. 32263

Overview and Properties

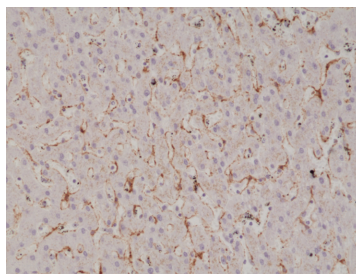
Contents:	This vial contains 100 µl protein A-affinity purified monoclonal antibody.
Synonym:	CAV-1
Immunogen:	Peptide from the C-terminal region of human caveolin 1
Cross Reactivity:	(+) Caveolin 1
Species Reactivity:	(+) Human
Form:	Liquid
Storage:	-20°C (as supplied)
Stability:	≥1 year
Storage Buffer:	PBS with 50% glycerol, 1% BSA, and 0.09% sodium azide
Clone:	RM325
Host:	Rabbit
Isotype:	IgG
Applications:	Immunohistochemistry (IHC) and Western blot (WB); the recommended starting dilution is 1:500-1:1,000 for IHC and 1:5,000-1:40,000 for WB. Other applications were not tested, therefore optimal working concentration/dilution should be determined empirically.

Images



Lane 1: HeLa cell lysate

WB of HeLa cell lysate using Caveolin-1 (C-Term) Rabbit Monoclonal Antibody (Clone RM325) at a dilution of 1:40,000.



Immunohistochemical staining of formalin-fixed and paraffin-embedded human liver tissue using Caveolin-1 (C-Term) Rabbit Monoclonal Antibody (Clone RM325) at a 1:1,000 dilution.

WARNING
THIS PRODUCT IS FOR RESEARCH ONLY - NOT FOR HUMAN OR VETERINARY DIAGNOSTIC OR THERAPEUTIC USE.

SAFETY DATA
This material should be considered hazardous until further information becomes available. Do not ingest, inhale, get in eyes, on skin, or on clothing. Wash thoroughly after handling. Before use, the user must review the [complete](#) Safety Data Sheet, which has been sent via email to your institution.

WARRANTY AND LIMITATION OF REMEDY
Buyer agrees to purchase the material subject to Cayman's Terms and Conditions. Complete Terms and Conditions including Warranty and Limitation of Liability information can be found on our website.

Copyright Cayman Chemical Company, 01/30/2024

CAYMAN CHEMICAL
1180 EAST ELLSWORTH RD
ANN ARBOR, MI 48108 · USA
PHONE: [800] 364-9897
[734] 971-3335
FAX: [734] 971-3640
CUSTSERV@CAYMANCHEM.COM
WWW.CAYMANCHEM.COM

PRODUCT INFORMATION



Description

Caveolin 1 is a hairpin membrane protein with roles in cell signaling and migration, extracellular matrix organization, cholesterol distribution, and endocytosis encoded by *CAV1* in humans.^{1,2} It is composed of N- and C-terminal cytoplasmic tails separated by a hydrophobic segment embedded in the membrane and an N-terminal oligomerization domain that contains a caveolin scaffolding domain.^{2,3} It is ubiquitously expressed, with the highest levels in adipocytes, endothelial cells, and pneumocytes, and is localized to plasma membrane caveolae and the Golgi apparatus membrane. Caveolin 1 interacts with cholesterol to facilitate cholesterol transport and the organization of lipid rafts, as well as various G proteins, kinases, hormone receptors, and nitric oxide synthases, to modulate cellular signaling. *CAV1* is overexpressed in liver, colon, kidney, lung, and breast cancers and acts as a tumor promoter or suppressor in a tumor type and/or stage-dependent manner.¹ Cayman's Caveolin 1 (C-Term) Rabbit Monoclonal Antibody (Clone RM325) can be used for immunohistochemistry (IHC) and Western blot (WB) applications.

References

1. Nwosu, Z.C., Ebert, M.P., Dooley, S., *et al.* Caveolin-1 in the regulation of cell metabolism: A cancer perspective. *Mol. Cancer* **15**(1), 71 (2016).
2. Boscher, C. and Nabi, I.R. Caveolin-1: Role in cell signaling. *Adv. Exp. Med. Biol.* **729**, 29-50 (2012).
3. Branza-Nichita, N., Macovei, A., and Lazar, C. Caveolae-dependent endocytosis in viral infection. *Molecular Regulation of Endocytosis*. Brian C., editor, *IntechOpen* (2012).

CAYMAN CHEMICAL
1180 EAST ELLSWORTH RD
ANN ARBOR, MI 48108 · USA
PHONE: [800] 364-9897
[734] 971-3335
FAX: [734] 971-3640
CUSTSERV@CAYMANCHEM.COM
WWW.CAYMANCHEM.COM