

PRODUCT INFORMATION

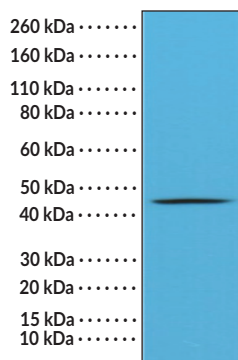


Cytokeratin 20 (C-Term) Rabbit Monoclonal Antibody (Clone RM283) Item No. 32232

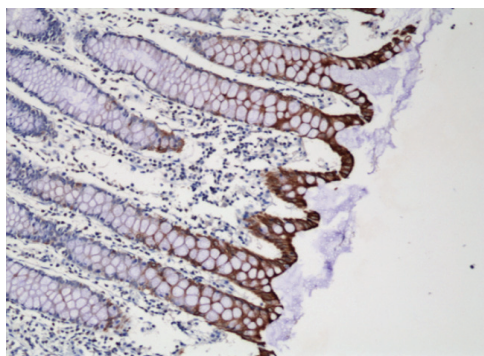
Overview and Properties

Contents:	This vial contains 100 µl of protein A-affinity purified monoclonal antibody.
Synonyms:	CK-20, Keratin-20, Keratin, Type II Cytoskeletal 20, KRT20
Immunogen:	Peptide from the C-terminal region of human cytokeratin 20
Cross Reactivity:	(+) Cytokeratin 20
Species Reactivity:	(+) Human
Form:	Liquid
Storage:	-20°C (as supplied)
Stability:	≥1 year
Storage Buffer:	PBS with 50% glycerol, 1% BSA, and 0.09% sodium azide
Clone:	RM283
Host:	Rabbit
Isotype:	IgG
Applications:	Immunohistochemistry (IHC) and Western blot (WB); the recommended starting dilution is 1:100-1:250 for IHC and 1:1,000-1:2,000 for WB. Other applications were not tested, therefore optimal working concentration/dilution should be determined empirically.

Images



WB of A431 cell lysates using Cytokeratin 20 (C-Term) Rabbit Monoclonal Antibody (Clone RM283) at a dilution of 1:1,000.



Immunohistochemical staining of formalin-fixed and paraffin-embedded human colon tissue using Cytokeratin 20 (C-Term) Rabbit Monoclonal Antibody (Clone RM283) at a dilution of 1:250.

WARNING
THIS PRODUCT IS FOR RESEARCH ONLY - NOT FOR HUMAN OR VETERINARY DIAGNOSTIC OR THERAPEUTIC USE.

SAFETY DATA
This material should be considered hazardous until further information becomes available. Do not ingest, inhale, get in eyes, on skin, or on clothing. Wash thoroughly after handling. Before use, the user must review the complete Safety Data Sheet, which has been sent via email to your institution.

WARRANTY AND LIMITATION OF REMEDY
Buyer agrees to purchase the material subject to Cayman's Terms and Conditions. Complete Terms and Conditions including Warranty and Limitation of Liability information can be found on our website.

Copyright Cayman Chemical Company, 01/30/2024

CAYMAN CHEMICAL
1180 EAST ELLSWORTH RD
ANN ARBOR, MI 48108 · USA
PHONE: [800] 364-9897
[734] 971-3335
FAX: [734] 971-3640
CUSTSERV@CAYMANCHEM.COM
WWW.CAYMANCHEM.COM

PRODUCT INFORMATION



Description

Cytokeratin 20 (CK-20) is an intermediate filament protein and a member of the cytokeratin protein family.^{1,2} It is a type I acidic cytokeratin expressed in intestinal epithelium, gastric foveolar epithelium, urothelium, and Merkel cells and is localized in the cytoplasm.³ CK-20 is found in various tumors of mucosal origin, including adenocarcinomas of the large and small intestine, ovarian cancers, and Merkel cell carcinomas.⁴ It is also found in urothelial carcinomas and in adenocarcinomas of the bile ducts, pancreas, and stomach, but is not present in primary epithelial tumors of non-mucosal origin, and has been used as a biomarker of tumor origin.^{4,5} Cayman's Cytokeratin 20 (C-Term) Rabbit Monoclonal Antibody (Clone RM283) can be used for immunohistochemistry (IHC) and Western blot (WB) applications.

References

1. Moll, R., Schiller, D.L., and Franke, W.W. Identification of protein IT of the intestinal cytoskeleton as a novel type I cytokeratin with unusual properties and expression patterns. *J. Cell Biol.* **111(2)**, 567-580 (1990).
2. Weng, Y.-R., Cui, Y., and Fang, J.-Y. Biological functions of cytokeratin 18 in cancer. *Mol. Cancer Res.* **10(4)**, 485-493 (2012).
3. Moll, R., Löwe, A., Laufer, J., *et al.* Cytokeratin 20 in human carcinomas. A new histodiagnostic marker detected by monoclonal antibodies. *Am. J. Pathol.* **140(2)**, 427-447 (1992).
4. Rabban, J.T., Soslow, R.A., and Zaloudek, C.Z. Immunohistology of the female genital tract. *Diagnostic immunohistochemistry*. Dabbs, D.J., editor, 3rd edition, *W.B. Sanders* (2010).
5. Hernandez, B.Y., Frierson, H.F., Moskaluk, C.A., *et al.* CK20 and CK7 protein expression in colorectal cancer: Demonstration of the utility of a population-based tissue microarray. *Hum. Pathol.* **36(3)**, 275-281 (2005).

CAYMAN CHEMICAL
1180 EAST ELLSWORTH RD
ANN ARBOR, MI 48108 · USA
PHONE: [800] 364-9897
[734] 971-3335
FAX: [734] 971-3640
CUSTSERV@CAYMANCHEM.COM
WWW.CAYMANCHEM.COM