

# PRODUCT INFORMATION



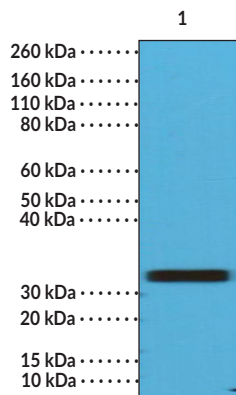
## CD20 (C-Term) Rabbit Monoclonal Antibody (Clone RM272)

Item No. 32222

### Overview and Properties

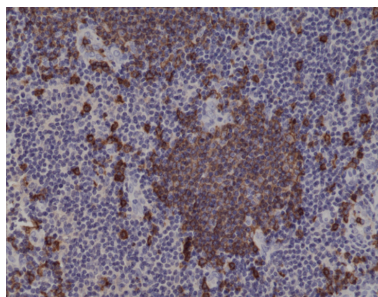
<b>Contents:</b>	This vial contains 100 µl of protein A-affinity purified monoclonal antibody.
<b>Synonyms:</b>	B-lymphocyte Cell-surface Antigen B1, Membrane-spanning 4-domains Subfamily A Member 1
<b>Immunogen:</b>	Peptide from the C-terminal region of human CD20
<b>Cross Reactivity:</b>	(+) CD20
<b>Species Reactivity:</b>	(+) Human
<b>Form:</b>	Liquid
<b>Storage:</b>	-20°C (as supplied)
<b>Stability:</b>	≥1 year
<b>Storage Buffer:</b>	PBS with 50% glycerol, 1% BSA, and 0.09% sodium azide
<b>Clone:</b>	RM272
<b>Host:</b>	Rabbit
<b>Isotype:</b>	IgG
<b>Applications:</b>	Immunohistochemistry (IHC) and Western blot (WB); the recommended starting dilution is 1:500-1:1,000 for IHC and 1:1,000-1:2,000 for WB. Other applications were not tested, therefore optimal working concentration/dilution should be determined empirically.

### Images



Lane 1: Raji cell lysates

WB of Raji cell lysates using CD20 (C-Term) Rabbit Monoclonal Antibody (Clone RM272) at a dilution of 1:1,000.



Immunohistochemical staining of formalin-fixed and paraffin-embedded human tonsil tissue using CD20 (C-Term) Rabbit Monoclonal Antibody (Clone RM272) at a 1:1,000 dilution.

WARNING  
THIS PRODUCT IS FOR RESEARCH ONLY - NOT FOR HUMAN OR VETERINARY DIAGNOSTIC OR THERAPEUTIC USE.

SAFETY DATA  
This material should be considered hazardous until further information becomes available. Do not ingest, inhale, get in eyes, on skin, or on clothing. Wash thoroughly after handling. Before use, the user must review the complete Safety Data Sheet, which has been sent via email to your institution.

WARRANTY AND LIMITATION OF REMEDY  
Buyer agrees to purchase the material subject to Cayman's Terms and Conditions. Complete Terms and Conditions including Warranty and Limitation of Liability information can be found on our website.

Copyright Cayman Chemical Company, 01/29/2024

CAYMAN CHEMICAL  
1180 EAST ELLSWORTH RD  
ANN ARBOR, MI 48108 · USA  
PHONE: [800] 364-9897  
[734] 971-3335  
FAX: [734] 971-3640  
CUSTSERV@CAYMANCHEM.COM  
WWW.CAYMANCHEM.COM

# PRODUCT INFORMATION



## Description

---

CD20 is a non-glycosylated protein encoded by *MS4A1* in humans.<sup>1</sup> It is comprised of four transmembrane domains, a single intracellular loop, and two extracellular loop domains with both the N- and C-termini located in the cytosol. CD20 is a general B cell marker that is expressed from the late pre-B lymphocyte stage but is not expressed by pro-B lymphocytes and is lost in terminally differentiated plasma cells and plasmablasts. It forms supramolecular complexes with CD53, CD81, and CD82, as well as MHCII, CD40, B cell receptors, and C-terminal Src kinase-binding protein (CBP) to contribute to signal transduction. *MS4A1* expression is variable in B cell malignancies, with the lowest expression found in patients with chronic lymphocytic leukemia (CLL) and the highest expression found in patients with diffuse large B cell lymphoma (DLBCL) or hairy cell lymphomas. *MS4A1* expression is enriched on IFN- $\gamma$ -inducible T-box transcription factor-expressing B cells in blood isolated from patients with multiple sclerosis.<sup>2</sup> Cayman's CD20 (C-Term) Rabbit Monoclonal Antibody (Clone RM272) can be used for immunohistochemistry (IHC) and Western blot (WB) applications.

## References

---

1. Pavlasova, G. and Mraz, M. The regulation and function of CD20: An "enigma" of B-cell biology and targeted therapy. *Haematologica* **105**(6), 1494-1506 (2020).
2. van Langelaar, J., Rijvers, L., Smolders, J., *et al.* B and T cells driving multiple sclerosis: Identity, mechanisms and potential triggers. *Front. Immunol.* **11**, 760 (2020).

CAYMAN CHEMICAL  
1180 EAST ELLSWORTH RD  
ANN ARBOR, MI 48108 · USA  
PHONE: [800] 364-9897  
[734] 971-3335  
FAX: [734] 971-3640  
CUSTSERV@CAYMANCHEM.COM  
WWW.CAYMANCHEM.COM