

# PRODUCT INFORMATION



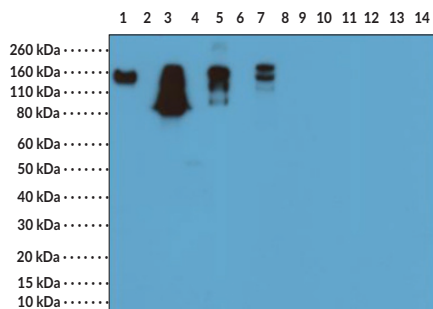
## IgG (mouse) Rabbit Monoclonal Antibody (Clone RM104)

Item No. 32002

### Overview and Properties

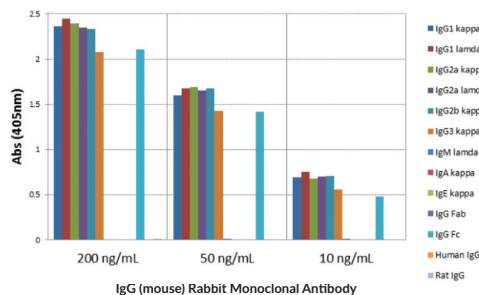
<b>Contents:</b>	This vial contains 100 µg of protein A-affinity purified monoclonal antibody.
<b>Synonym:</b>	Immunoglobulin G
<b>Immunogen:</b>	Mouse IgG
<b>Cross Reactivity:</b>	(+) Goat IgG; (+) Mouse IgG1, IgG2a, IgG2b, IgG3; (-) Human, rat IgG; (-) Mouse IgA, IgE, IgM
<b>Species Reactivity:</b>	(+) Mouse; other species not tested
<b>Form:</b>	Liquid
<b>Storage:</b>	-20°C (as supplied)
<b>Stability:</b>	≥1 year
<b>Storage Buffer:</b>	PBS, with 50% glycerol, 1% BSA, and 0.09% sodium azide
<b>Concentration:</b>	1 mg/ml
<b>Clone:</b>	RM104
<b>Host:</b>	Rabbit
<b>Isotype:</b>	IgG
<b>Applications:</b>	ELISA and Western blot (WB; non-reducing conditions); the recommended starting concentration for ELISA is 0.005-0.2 µg/ml and 0.1-0.5 µg/ml for WB. Other applications were not tested, therefore optimal working concentration/dilution should be determined empirically.

### Images

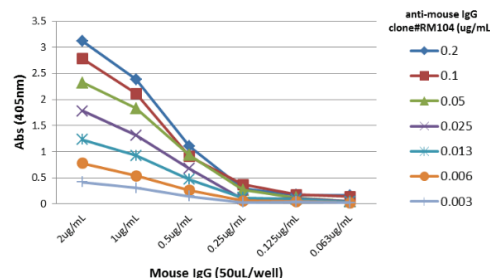


Lane 1: Mouse IgG1 (non-reduced)  
Lane 2: Mouse IgG1 (reduced)  
Lane 3: Mouse IgG2a (non-reduced)  
Lane 4: Mouse IgG2a (reduced)  
Lane 5: Mouse IgG2b (non-reduced)  
Lane 6: Mouse IgG2b (reduced)  
Lane 7: Mouse IgG3 (non-reduced)  
Lane 8: Mouse IgG3 (reduced)  
Lane 9: Mouse IgM (non-reduced)  
Lane 10: Mouse IgM (reduced)  
Lane 11: Mouse IgA (non-reduced)  
Lane 12: Mouse IgA (reduced)  
Lane 13: Mouse IgE (non-reduced)  
Lane 14: Mouse IgE (reduced)

WB of non-reduced and reduced mouse immunoglobulins (20 ng/lane), using 0.2 µg/ml of IgG (mouse) Rabbit Monoclonal Antibody. This antibody reacts to non-reduced mouse IgG1, IgG2a, IgG2b, and IgG3. It showed no cross reactivity with IgM, IgA, or IgE.



**ELISA of Mouse Immunoglobulins (Igs).** IgG (mouse) Rabbit Monoclonal Antibody reacts to the Fc region of mouse IgG1, IgG2a, IgG2b, and IgG3; no cross reactivity with IgM, IgA, IgE, human or rat IgG. The plate was coated with 50 ng/well of different Igs. 200 ng/ml, 50 ng/ml, or 10 ng/ml of IgG (mouse) Rabbit Monoclonal Antibody was used as the primary antibody. An alkaline phosphatase conjugated anti-rabbit IgG was used as the secondary antibody.



**A Titer ELISA using IgG (mouse) Rabbit Monoclonal Antibody.** The plate was coated with different amounts of mouse IgG. A serial dilution of IgG (mouse) Rabbit Monoclonal Antibody was used as the primary antibody. An alkaline phosphatase conjugated anti-rabbit IgG was used as the secondary antibody.

**WARNING**  
THIS PRODUCT IS FOR RESEARCH ONLY - NOT FOR HUMAN OR VETERINARY DIAGNOSTIC OR THERAPEUTIC USE.

**SAFETY DATA**  
This material should be considered hazardous until further information becomes available. Do not ingest, inhale, get in eyes, on skin, or on clothing. Wash thoroughly after handling. Before use, the user must review the complete Safety Data Sheet, which has been sent via email to your institution.

**WARRANTY AND LIMITATION OF REMEDY**  
Buyer agrees to purchase the material subject to Cayman's Terms and Conditions. Complete Terms and Conditions including Warranty and Limitation of Liability information can be found on our website.

Copyright Cayman Chemical Company, 11/06/2020

**CAYMAN CHEMICAL**  
1180 EAST ELLSWORTH RD  
ANN ARBOR, MI 48108 · USA  
PHONE: [800] 364-9897  
[734] 971-3335  
FAX: [734] 971-3640  
CUSTSERV@CAYMANCHEM.COM  
WWW.CAYMANCHEM.COM

# PRODUCT INFORMATION



## Description

---

Immunoglobulin G (IgG) is a member of the immunoglobulin superfamily of glycoproteins that plays a central role in the adaptive immune response.<sup>1</sup> It is produced by B cells and later secreted by plasma cells and is the most abundant circulating antibody in human and mouse serum.<sup>1-3</sup> IgG consists of two heavy chains of approximately 50 kDa each and two light chains of approximately 25 kDa each.<sup>1</sup> The heavy chains are linked together by disulfide bonds to form an Fc region and also combine with the light chains to form the Fab region, which mediate receptor and antigen binding, respectively.<sup>4</sup> IgG is produced following IgM class-switching in response to infection and is involved in numerous humoral host defense responses, including antibody-dependent cell-mediated cytotoxicity (ADCC), toxin neutralization, and pathogen opsonization.<sup>2</sup> IgG exists as four isotypes in mice: IgG1, IgG2b, IgG3, and, in a strain-specific manner, IgG2a or IgG2c.<sup>5,6</sup> Formulations containing humanized, chimeric, or murine IgG monoclonal antibodies have been used in the treatment of inflammatory diseases, such as ulcerative colitis, rheumatoid arthritis, and asthma, as well as cancer.<sup>7</sup> Cayman's IgG (mouse) Rabbit Monoclonal Antibody can be used for ELISA and Western blot (WB; non-reducing conditions) applications. The antibody recognizes the Fc region of IgG from mouse samples.

## References

---

1. Schroeder, H.W., Jr. and Cavicini, L. Structure and function of immunoglobulins. *J. Allergy Clin. Immunol.* **125(2 Suppl. 2)**, S41-S52 (2010).
2. Vidarsson, G., Dekkers, G., and Rispens, T. IgG subclasses and allotypes: From structure to effector functions. *Front. Immunol.* **5**, 520 (2014).
3. Mayumi, M., Kuritani, T., Kubagawa, H.M., *et al.* IgG subclass expression by human B lymphocytes and plasma cells: B lymphocytes precommitted to IgG subclass can be preferentially induced by polyclonal mitogens with T cell help. *J. Immunol.* **130(2)**, 671-677 (1983).
4. Vaillant A.A.J. and Ramphul K. Immunoglobulin. In: StatPearls [Internet]. Treasure Island (FL): StatPearls Publishing (2020). Available from: <https://www.ncbi.nlm.nih.gov/books/NBK513460/>
5. Collins, A.M. IgG subclass co-expression brings harmony to the quartet model of murine IgG function. *Immunol. Cell Biol.* **94(10)**, 949-954 (2016).
6. Martin, R.M., Brady, J.L., and Lew, A.M. The need for IgG2c specific antiserum when isotyping antibodies from C57BL/6 and NOD mice. *J. Immunol. Methods* **212(2)**, 187-192 (1998).
7. Lu, R.-M., Hwang, Y.-C., Liu, I.-J., *et al.* Development of therapeutic antibodies for the treatment of diseases. *J. Biomed. Sci.* **27(1)**, 1 (2020).

CAYMAN CHEMICAL  
1180 EAST ELLSWORTH RD  
ANN ARBOR, MI 48108 · USA  
PHONE: [800] 364-9897  
[734] 971-3335  
FAX: [734] 971-3640  
CUSTSERV@CAYMANCHEM.COM  
WWW.CAYMANCHEM.COM