

# PRODUCT INFORMATION

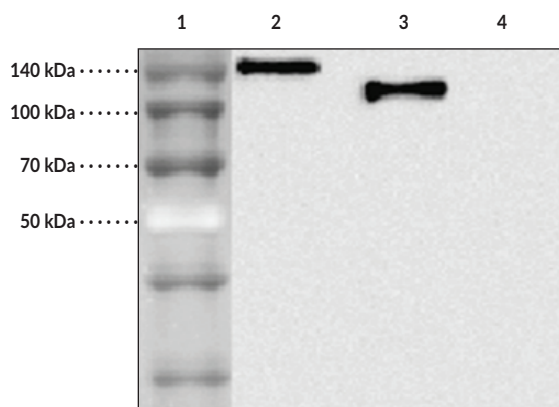


## ACE2 (human) Monoclonal Antibody - Biotinylated (Clone AC18F) Item No. 30583

### Overview and Properties

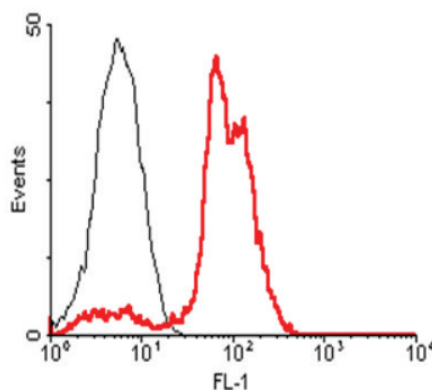
**Contents:** This vial contains 50 µg of protein G-purified monoclonal antibody.  
**Synonyms:** ACE-related Carboxypeptidase, ACEH, Angiotensin-converting Enzyme 2, Angiotensin-converting Enzyme Homolog, Metalloprotease MPROT15  
**Immunogen:** Recombinant human ACE2  
**Species Reactivity:** (+) Human  
**Form:** Liquid  
**Storage:** -20°C (as supplied); avoid freeze/thaw cycles  
**Stability:** ≥1 year  
**Storage Buffer:** 0.2 µm-filtered solution in PBS, pH 7.4  
**Concentration:** 1 mg/ml  
**Clone:** AC18F  
**Host:** Mouse  
**Isotype:** IgG1κ  
**Applications:** ELISA (direct or indirect), Flow Cytometry (FC), and Western blot (WB; using ECL); the recommended starting dilution is 1:2,000-1:10,000 for ELISA and WB and 1:1,000 for FC. The suggested blocking and dilution buffer for WB is PBST with 0.05% Tween 20 and 5% skim milk. The suggested incubation time for WB is 1 hour at room temperature. Other applications were not tested, therefore optimal working concentration/dilution should be determined empirically.

### Images



Lane 1: MW Markers  
Lane 2: hACE2 (Fc protein)  
Lane 3: hACE2 (Ecto domain) (FLAG®-tagged)  
Lane 4: Other hGITR (Fc protein) (control)

WB analysis using ACE2 (human) Monoclonal Antibody - Biotinylated (Clone AC18F) (Item No. 30583) at 1:2,000 dilution.



FACS: HepG2 cells were stained using ACE2 (human) Monoclonal Antibody - Biotinylated (Clone AC18F) (Item No. 30583).

**WARNING**  
THIS PRODUCT IS FOR RESEARCH ONLY - NOT FOR HUMAN OR VETERINARY DIAGNOSTIC OR THERAPEUTIC USE.

**SAFETY DATA**  
This material should be considered hazardous until further information becomes available. Do not ingest, inhale, get in eyes, on skin, or on clothing. Wash thoroughly after handling. Before use, the user must review the complete Safety Data Sheet, which has been sent via email to your institution.

**WARRANTY AND LIMITATION OF REMEDY**  
Buyer agrees to purchase the material subject to Cayman's Terms and Conditions. Complete Terms and Conditions including Warranty and Limitation of Liability information can be found on our website.

Copyright Cayman Chemical Company, 04/01/2021

**CAYMAN CHEMICAL**  
1180 EAST ELLSWORTH RD  
ANN ARBOR, MI 48108 · USA  
PHONE: [800] 364-9897  
[734] 971-3335  
FAX: [734] 971-3640  
CUSTSERV@CAYMANCHEM.COM  
WWW.CAYMANCHEM.COM

# PRODUCT INFORMATION



## Description

---

Angiotensin-converting enzyme 2 (ACE2) is a carboxypeptidase and homolog of ACE1 that is encoded by ACE2 in humans.<sup>1,2</sup> It is a type I transmembrane protein composed of a cytoplasmic tail and an extracellular domain containing a HEMGH motif, characteristic of zinc-metallopeptidases, which exhibits carboxymonopeptidase activity.<sup>1</sup> ACE2 is expressed in vascular endothelial cells where it catalyzes the conversion of angiotensin I to angiotensin 1-9, a peptide of unknown function, and angiotensin II to the vasodilatory peptide angiotensin 1-7 to regulate systemic blood pressure.<sup>1,2</sup> It is also expressed in the epithelial cells of the kidney, heart, lung, small intestine, and liver and has roles in fluid homeostasis, cardiac contractility, and amino acid absorption, as well as the prevention of pulmonary fibrosis and hypertension. ACE2 also acts as a functional receptor for severe acute respiratory syndrome coronavirus (SARS-CoV) and SARS-CoV-2 to facilitate viral entry into host cells.<sup>3,4</sup> Cayman's ACE2 (human) Monoclonal Antibody-Biotinylated (Clone AC18F) can be used for ELISA, flow cytometry (FC), and Western blot (WB) applications.

## References

---

1. Perlot, T. and Penninger, J.M. ACE2 - From the renin-angiotensin system to gut microbiota and malnutrition. *Microbes Infect.* **15(13)**, 866-873 (2013).
2. Santos, R.A.S., Sampaio, W.O., Alzamora, A.C., *et al.* The ACE2/angiotensin-(1-7)/MAS axis of the renin-angiotensin system: Focus on angiotensin-(1-7). *Physiol. Rev.* **98(1)**, 505-553 (2018).
3. Hoffmann, M., Kleine-Weber, H., Schroeder, S., *et al.* SARS-CoV-2 cell entry depends on ACE2 and TMPRSS2 and is blocked by clinically proven protease inhibitor. *Cell* **181**, 1-10 (2020).
4. Gurwitz, D. Angiotensin receptor blockers as tentative SARS-CoV-2 therapeutics. *Drug Dev. Res.* (2020).

CAYMAN CHEMICAL  
1180 EAST ELLSWORTH RD  
ANN ARBOR, MI 48108 · USA  
PHONE: [800] 364-9897  
[734] 971-3335  
FAX: [734] 971-3640  
CUSTSERV@CAYMANCHEM.COM  
WWW.CAYMANCHEM.COM