

PRODUCT INFORMATION



C20 and C22 Fatty Acid Methyl Ester Mixture

Item No. 29336

Synonym: SFE 20 and SFE 22 Fatty Acid Methyl Ester Mixture
Supplied as: A solution in dichloromethane
Storage: -20°C
Stability: ≥1 year
Concentration: 25 mg/ml

Information represents the product specifications. Batch specific analytical results are provided on each certificate of analysis.

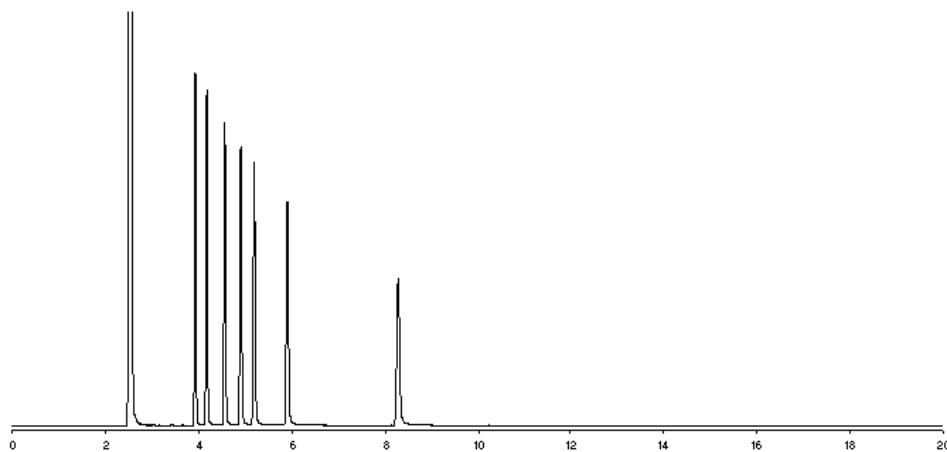
Description and Data

C20 and C22 Fatty Acid Methyl Ester Mixture contains six C20 and one C22 fatty acid methyl ester. It is intended for use as a reference standard for the quantification of these C20 and C22 fatty acids in various sample types by GC-FID or GC-MS. This mixture is supplied in an amber ampule in which the headspace has been purged with argon to prevent lipid oxidation.

Included are:

Elution Order*	Item Name	% Concentration by Weight
1	Arachidic Acid methyl ester	14
2	11(Z)-Eicosenoic Acid methyl ester	14
3	11(Z),14(Z)-Eicosadienoic Acid methyl ester	14
4	Dihomo-γ-Linolenic Acid methyl ester	14
5	Arachidonic Acid methyl ester	14
6	Eicosapentaenoic Acid methyl ester	14
7	Docosahexaenoic Acid methyl ester	14

*GC Column Used: SP-2330, 30 m x 0.25 mm x 0.2 μm



WARNING

THIS PRODUCT IS FOR RESEARCH ONLY - NOT FOR HUMAN OR VETERINARY DIAGNOSTIC OR THERAPEUTIC USE.

SAFETY DATA

This material should be considered hazardous until further information becomes available. Do not ingest, inhale, get in eyes, on skin, or on clothing. Wash thoroughly after handling. Before use, the user must review the complete Safety Data Sheet, which has been sent via email to your institution.

WARRANTY AND LIMITATION OF REMEDY

Buyer agrees to purchase the material subject to Cayman's Terms and Conditions. Complete Terms and Conditions including Warranty and Limitation of Liability information can be found on our website.

Copyright Cayman Chemical Company, 04/29/2026

CAYMAN CHEMICAL

1180 EAST ELLSWORTH RD
ANN ARBOR, MI 48108 · USA

PHONE: [800] 364-9897

[734] 971-3335

FAX: [734] 971-3640

CUSTSERV@CAYMANCHEM.COM

WWW.CAYMANCHEM.COM