

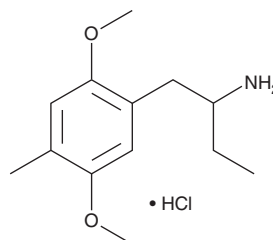
# PRODUCT INFORMATION



## $\alpha$ -ethyl 2C-D (hydrochloride)

Item No. 26596

**CAS Registry No.:** 54690-19-6  
**Formal Name:**  $\alpha$ -ethyl-2,5-dimethoxy-4-methylbenzeneethanamine, monohydrochloride  
**Synonyms:** BL 3912, 4C-D,  $\alpha$ -EH DOM,  $\alpha$ -ET 2C-D  
**MF:**  $C_{13}H_{21}NO_2 \cdot HCl$   
**FW:** 259.8  
**Purity:**  $\geq 98\%$   
**Supplied as:** A crystalline solid  
**Storage:**  $-20^{\circ}C$   
**Stability:**  $\geq 5$  years



Information represents the product specifications. Batch specific analytical results are provided on each certificate of analysis.

### Description

$\alpha$ -ethyl 2C-D (hydrochloride) (Item No. 26596) is an analytical reference standard categorized as a phenethylamine and amphetamine.  $\alpha$ -ethyl 2C-D generalizes to MDMA (Item Nos. ISO60190 | 13971) in drug discrimination studies.<sup>1</sup> This product is intended for research and forensic applications.

### Reference

1. Glennon, R.A. MDMA-like stimulus effects of  $\alpha$ -ethyltryptamine and the  $\alpha$ -ethyl homolog of DOM. *Pharmacol. Biochem. Behav.* **46(2)**, 459-462 (1993).

#### WARNING

THIS PRODUCT IS FOR RESEARCH ONLY - NOT FOR HUMAN OR VETERINARY DIAGNOSTIC OR THERAPEUTIC USE.

#### SAFETY DATA

This material should be considered hazardous until further information becomes available. Do not ingest, inhale, get in eyes, on skin, or on clothing. Wash thoroughly after handling. Before use, the user must review the [complete](#) Safety Data Sheet, which has been sent via email to your institution.

#### WARRANTY AND LIMITATION OF REMEDY

Buyer agrees to purchase the material subject to Cayman's Terms and Conditions. Complete Terms and Conditions including Warranty and Limitation of Liability information can be found on our website.

Copyright Cayman Chemical Company, 07/24/2023

#### CAYMAN CHEMICAL

1180 EAST ELLSWORTH RD  
ANN ARBOR, MI 48108 · USA

**PHONE:** [800] 364-9897  
[734] 971-3335

**FAX:** [734] 971-3640

CUSTSERV@CAYMANCHEM.COM  
WWW.CAYMANCHEM.COM