



CXCL9 (pig)

A brand name of



For laboratory research use only. Not for human or veterinary diagnostic use.



Bertin Pharma also markets pre-analytical products, EIA kits, antibodies & biochemicals for:

- ▶ **Cardiology / Hypertension**
- ▶ **Diabetes / Obesity**
- ▶ **Endocrinology / Metabolism**
- ▶ **Inflammation**
- ▶ **Pharmacology**
- ▶ **Psychopharmacology**
- ▶ **Nitric Oxide**
- ▶ **Oncology / Apoptosis**
- ▶ **Oxidative injury**
- ▶ **Cell signaling**
- ▶ **Drug metabolism**

Do not hesitate to contact our after-sales services for further information at bioreagent@bertinpharma.com

**CXCL9 (pig)
Enzyme Immunoassay kit
#A05418.96 wells**

For research laboratory use only
Not for human diagnostic use

This assay has been developed & validated
by Bertin Pharma



Fabriqué en France
Made in France

#A11418
Version: 0117

Table of contents

▶ Precaution for use	6
▶ Background	7
▶ Principle of the assay	8
▶ Materials and equipment required	10
▶ Sample collection and preparation	11
▶ Reagent preparation	12
▶ Assay procedure	15
▶ Data analysis	20
▶ Acceptable range	21
▶ Typical results	22
▶ Characteristics	24
▶ Troubleshooting	25
▶ Bibliography	26

96 wells
Storage: +4°C
Expiry date: stated on the package

This kit contains:

Designation	Colour of cap	Item #	Quantity per kit	Form
CXCL9 precoated 96-well Strip Plate	Blister with zip	A08418.1 ea	1	-
Streptavidin Poly_HRP Tracer	Green	A04410.100 dtn	1	Liquid
CXCL9 (pig) Biotin-labelled Antibody	Red	A03418.100 dtn	1	Liquid
CXCL9 (pig) Standard	Blue with red septum	A06418.1 ea	2	Lyophilised
Poly_HRP EIA Buffer	Grey / Blue	A07410.1 ea	1	Lyophilised
Wash Buffer	Silver	A17000.1 ea	1	Liquid
Tween 20	Transparent	A12000.1 ea	1	Liquid
HRP Substrate Solution	Black	A09034.100 dtn	1	Liquid
HRP Stop Solution	Yellow	A22410.100 dtn	1	Liquid
Technical Booklet	-	A11418.1 ea	1	-
Well cover Sheet	-	-	1	-

Each kit contains sufficient reagents for 96 wells. This allows for the construction of one standard curve in duplicate and the assay of 37 samples in duplicate.

If you want to use the kit in two times, we provide one additional vial of Standard.

▶ Precaution for use

Users are recommended to carefully read all instructions for use before starting work.

Each time a new pipette tip is used, aspirate a sample or reagent and expel it back into the same vessel. Repeat this operation two or three times before distribution in order to equilibrate the pipette tip.

- > For research laboratory use only
- > Not for human diagnostic use
- > Do not pipet liquids by mouth
- > Do not use kit components beyond the expiration date
- > Do not eat, drink or smoke in area in which kit reagents are handled
- > Avoid splashing

HRP Stop Solution and HRP Substrate Solution are harmful solutions. To avoid any contact, wear eye, hand, face and clothing protection when handling these.

Wearing gloves, laboratory coat and glasses is recommended when assaying kit materials and samples.

▷ Temperature

Unless otherwise specified, all the experiments are done at room temperature (RT), that is around +20°C. Working at +25°C or more affects the assay and decreases its efficiency.

▶ Background

▷ CXCL9 (pig)

CXCL9 is a small cytokine belonging to the CXC chemokine family that is also known as Monokine induced by gamma interferon (MIG).

It is secreted by various cell types including immune cells (T lymphocytes, NK cells, macrophages) and non-immune cells (fibroblasts, keratinocytes, endothelial cells) [1].

The main factor of production is the interferon-gamma [2] in Th1-type immune responses.

CXCR3 has been identified as the receptor of CXCL9 [3].

The main function of CXCL9 is the recruitment of immune cells on the inflammation site [4].

▶ Principle of the assay

This Enzyme Immunoassay (EIA/ELISA) is based on a sandwich technique. The wells of the plate supplied are coated with a polyclonal antibody specific to CXCL9 (pig).

CXCL9 (pig) introduced into the wells (standard or sample) will be bound by the polyclonal antibody coated on the plate and is then detected by a second polyclonal antibody tagged with biotin also specific for CXCL9 (pig).

The two antibodies then form a sandwich by binding on different parts of CXCL9 (pig).

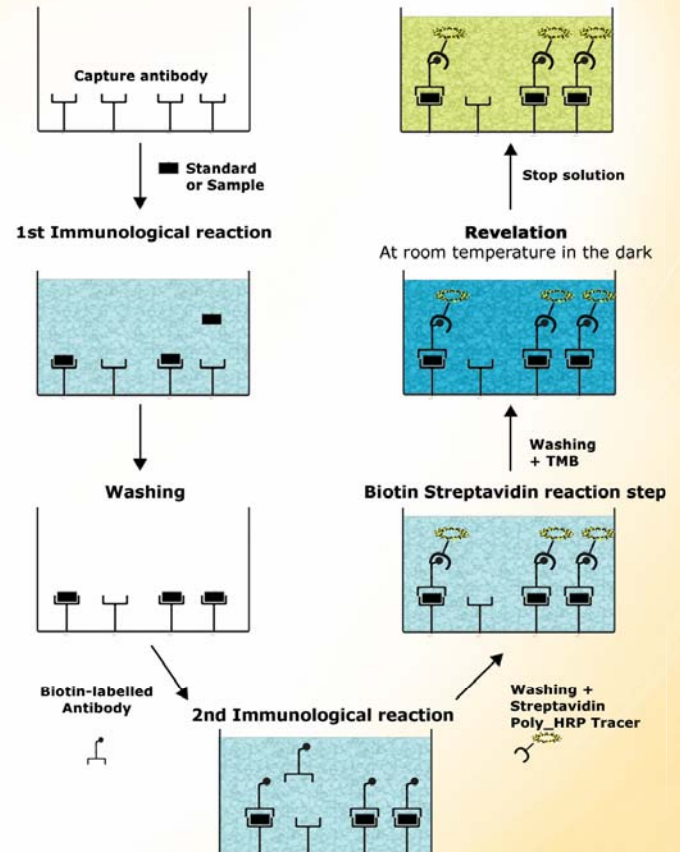
The sandwich is immobilised on the plate so reagents in excess may be washed away.

The immunological complex is revealed by the interaction between biotin and streptavidin labelled with HRP (Tracer).

The concentration of CXCL9 (pig) is determined by measuring the enzymatic activity of immobilized Tracer using TMB. The Tracer acts on TMB to form a yellow compound after the reaction has been stopped.

The intensity of the colour, which is determined by spectrophotometry at 450 nm, is proportional to the amount of CXCL9 (pig) present in the well during the immunological incubation.

The principle of the assay is summarised below:



▶ **Materials and equipment required**

In addition to standard laboratory equipment, the following material is required:

- > Precision micropipettes (20 to 1000 µL)
- > Spectrophotometer plate reader (450 nm filter)
- > Microplate washer (or washbottles)
- > Orbital microplate shaker
- > Multichannel pipette and disposable tips 30-300µL
- > UltraPure water #A07001.1L
- > Polypropylene tubes



Water used to prepare all EIA reagents and buffers must be UltraPure (deionized & free from organic contaminant traces).

Do not use distilled water, HPLC-grade water or sterile water.

UltraPure water may be purchased from Bertin Pharma: item #A07001.1L.

▶ **Sample collection and preparation**

This assay may be used to measure CXCL9 (pig).



It is the responsibility of the user to check the compatibility of the assay with the study matrix.

▶ **General precautions**

- > All samples must be free from organic solvents prior to assay.
- > Samples should be assayed immediately after collection or should be stored at -20°C or at -80°C.

▶ Reagent preparation

Each kit contains sufficient reagents for 96 wells. This allows for the construction of one standard curve in duplicate and the assay of 37 samples in duplicate.

If you want to use the kit in two times, we provide one additional vial of Standard.

All reagents need to be brought to room temperature (around +20°C) prior to the assay.

▶ Poly_HRP EIA Buffer

Reconstitute Poly_HRP EIA Buffer #A07410 with 25 mL of UltraPure water. Allow it to stand 5 minutes until completely dissolved and then mix thoroughly by gentle inversion.

Stability at 4°C: 1 month.



Before use, filter the Buffer on 0,22 µm filter.

▶ CXCL9 (pig) Standard

Reconstitute the CXCL9 (pig) Standard vial #A06418 with 1 mL of UltraPure water. Allow it to stand 5 minutes until completely dissolved and then mix thoroughly by gentle inversion.

The concentration of the first standard (S1) is 2.00 ng/mL. Prepare seven polypropylene tubes (for the seven other standards) and add 500 µL of Poly_HRP EIA Buffer into each tube. Then

prepare the standard concentrations by serial dilutions as follow:

Standard	Volume of Standard	Volume of Poly_HRP EIA Buffer	Standard concentration ng/mL
S1	-	-	2.00
S2	500 µL of S1	500 µL	1.00
S3	500 µL of S2	500 µL	0.50
S4	500 µL of S3	500 µL	0.25
S5	500 µL of S4	500 µL	0.13
S6	500 µL of S5	500 µL	0.06
S7	500 µL of S6	500 µL	0.03
S8	500 µL of S7	500 µL	0.02

Stability at 4°C: within the day.

▶ CXCL9 (pig) Biotin-labelled Antibody

The CXCL9 (pig) Biotin-labelled Antibody is supplied concentrated 10 times. Calculate the volume needed (number of wells multiplied by 0.1 mL) and then dilute the CXCL9 (pig) Biotin-labelled Antibody solution #A03418 with the appropriate volume of Poly_HRP EIA Buffer.

Example: for 40 wells you need 4 mL of CXCL9 (pig) Biotin-labelled Antibody (40 x 0.1 mL), add 0.4 mL of CXCL9 (pig) Biotin-labelled Antibody in 3.6 mL of Poly_HRP EIA Buffer.

Stability of diluted antibody at +4°C: within the day.

▷ **Wash Buffer**

Dilute 2 mL of concentrated Wash Buffer #A17000 with 800 mL of UltraPure water. Add 400 μ L of Tween 20 #A12000.

Use a magnetic stirring bar to mix the content.

Stability at +4°C: 1 month.

▷ **Assay procedure**

It is recommended to perform the assays in duplicate following the instructions hereafter.

▷ **Plate preparation**

Prepare the Wash Buffer as indicated in the reagent preparation section.

Open the plate packet and select the sufficient strips for your assay and place the unused strips back in the packet.

Stability at +4°C: 1 month.

Rinse each well 5 times with Wash Buffer (300 μ L/well).

Just before distributing the reagents and samples, remove the buffer from the wells by inverting the plate and shaking out the last drops on a paper towel.

▷ **Plate set-up**

A plate set-up is suggested hereafter.

The contents of each well may be recorded on the template sheet provided at the end of this technical booklet.

	1	2	3	4	5	6	7	8	9	10	11	12
A	Bk	S7	S3	*	*	*	*	*	*	*	*	*
B	Bk	S7	S3	*	*	*	*	*	*	*	*	*
C	Bk	S6	S2	*	*	*	*	*	*	*	*	*
D	NSB	S6	S2	*	*	*	*	*	*	*	*	*
E	NSB	S5	S1	*	*	*	*	*	*	*	*	*
F	NSB	S5	S1	*	*	*	*	*	*	*	*	*
G	S8	S4	*	*	*	*	*	*	*	*	*	*
H	S8	S4	*	*	*	*	*	*	*	*	*	*

Bk : Blank

NSB : Non Specific Binding

S1-S8 : Standards 1-8

* : Samples

▷ Pipetting the reagents

All samples and reagents must reach room temperature prior to performing the assay.

Use different tips to pipet all the reagents.

Before pipetting, equilibrate the pipette tips in each reagent.

Do not touch the liquid already in the well when expelling with the pipette tip.

> Poly_HRP EIA Buffer

Dispense 100 µL to NSB wells.

> CXCL9 (pig) Standard

Dispense 100 µL of each of the eight standards (S8 to S1) in duplicate to appropriate wells.

Start with the lowest concentration standard (S8) and equilibrate the tip in the next higher standard before pipetting.

> CCL9 (pig) Samples

Dispense 100 µL in duplicate to appropriate wells. Highly concentrated samples may be diluted in Poly-HRP EIA Buffer.

▷ Incubating the plate

Cover the plate with the cover sheet and incubate 60 minutes at room temperature, shaking at 300 rpm.

▷ Washing the plate

Rinse each well 5 times with the Wash Buffer (300 µL/well). Just before distributing reagents, remove the buffer from the wells by inverting the plate and shaking out the last drops on a paper towel.

▷ Pipetting the reagents

> CXCL9 (pig) Biotin-labelled antibody

Dispense 100 µL to each well, except Blank (Bk) wells.

▷ Incubating the plate

Cover the plate with the cover sheet and incubate 60 minutes at room temperature, shaking at 300 rpm.

▷ Washing the plate

Rinse each well 5 times with the Wash Buffer (300 µL/well). Just before distributing reagents, remove the buffer from the wells by inverting the plate and shaking out the last drops on a paper towel.

▷ Pipetting the reagents

> Streptavidin Poly_HRP Tracer

Dispense 100 µL to each well, except Blank (Bk) wells.

▷ Incubating the plate

Cover the plate with the cover sheet and incubate 30 minutes at room temperature, shaking at 300 rpm.

▷ Developing and reading the plate

- > Rinse each well 5 times with 300 µL of Wash Buffer. At the end of the last washing step, empty the plate and blot the plate on a paper towel to discard any trace of liquid.
- > Add 100µL of HRP Substrate Solution to each well. Incubate the plate in the dark at room temperature without shaking. For the time, look at the lot specific Quality Control Sheet (QCS).

In general, revelation time is 10 min.

- > Add 100µL of HRP Stop Solution to each well.
- > Wipe the bottom of the plate with a paper towel, and make sure that no liquid has splashed outside the wells.
- > Read the plate at 450 nm (yellow color).

Enzyme Immunoassay Protocol (volumes are in µL)				
	Blank	NSB	Standard	Sample
Poly_HRP EIA Buffer	-	100	-	-
Standard	-	-	100	-
Sample	-	-	-	100
Cover plate, incubate 60 minutes at room temperature under orbital shaking at 300 rpm				
Wash strips 5 times with 300 µL/well Discard liquid from the wells & dry on absorbent paper				
Biotin-labelled Antibody	-	100		
Cover plate, incubate 60 minutes at room temperature under orbital shaking at 300 rpm				
Wash strips 5 times with 300 µL/well Discard liquid from the wells & dry on absorbent paper				
Streptavidin Poly_HRP Tracer	-	100		
Cover plate, incubate 30 minutes at room temperature under orbital shaking at 300 rpm				
Wash strips 5 times with 300 µL/well Discard liquid from the wells & dry on absorbent paper				
HRP Substrate Solution	100			
Incubate the plate in the dark without agitation				
HRP Stop Solution	100			
Read the plate at 450 nm				

► Data analysis

Make sure that your plate reader has subtracted the absorbance readings of the blank wells (absorbance of HRP Substrate Solution alone) from the absorbance readings of the rest of the plate. If not, do it now.

- > Calculate the average absorbance for each NSB, standard and sample.
- > For each standard, plot the absorbance on y axis versus the concentration on x axis. Draw a best-fit line through the points.
- > To determine the concentration of your samples, find the absorbance value of each sample on the y axis.
- > Read the corresponding value on the x axis which is the concentration of your unknown sample.
- > Samples with a concentration greater than 2.00 ng/mL should be re-assayed after dilution in Poly_HRP EIA Buffer.
- > Most plate readers are supplied with a curve-fitting software capable of graphing these data (4-parameter logistic fit 4PL). If you have this type of software, we recommend using it. Refer to it for further information.

► Acceptable range

- > NSB absorbance ≤ 0.060 A.U.
- > Limit of detection ≤ 0.02 ng/mL

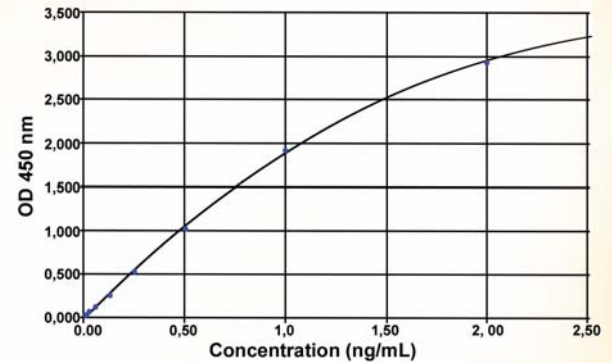
► Typical results

The following data are for demonstration purpose only. Your data may be different and still correct.

These data were obtained using all reagents as supplied in this kit under the following conditions: 10 minutes developing at room temperature, reading at 450 nm. A 5-parameter logistic fitting with a 1/Y ponderation was used to determine the concentrations.

Standard	CXCL9 (pig) (ng/mL)	Absorbance A.U.
S1	2.00	2.918
S2	1.00	1.915
S3	0.50	1.015
S4	0.25	0.535
S5	0.13	0.256
S6	0.06	0.138
S7	0.03	0.079
S8	0.02	0.049
NSB	0.00	0.024

Typical CXCL9 (pig) standard curve



► Characteristics

No validation in biological matrix.

All data shown below are from experiments realized in Buffer.

> Cross-reactivity

Species	Cross-reactivity
Recombinant CXCL9 (bovine)	None
Recombinant CXCL9 (equine)	Weak
Recombinant CXCL9 (feline)	None
Recombinant CXCL9 (human)	None
Recombinant CXCL9 (mouse)	None
Recombinant CXCL9 (ovine)	None
Recombinant CXCL9 (rat)	None

- > **Limit of detection** calculated as the concentration of CXCL9 (pig) corresponding to the NSB average plus three standard deviation is ≤ 0.02 ng/mL.

► Troubleshooting

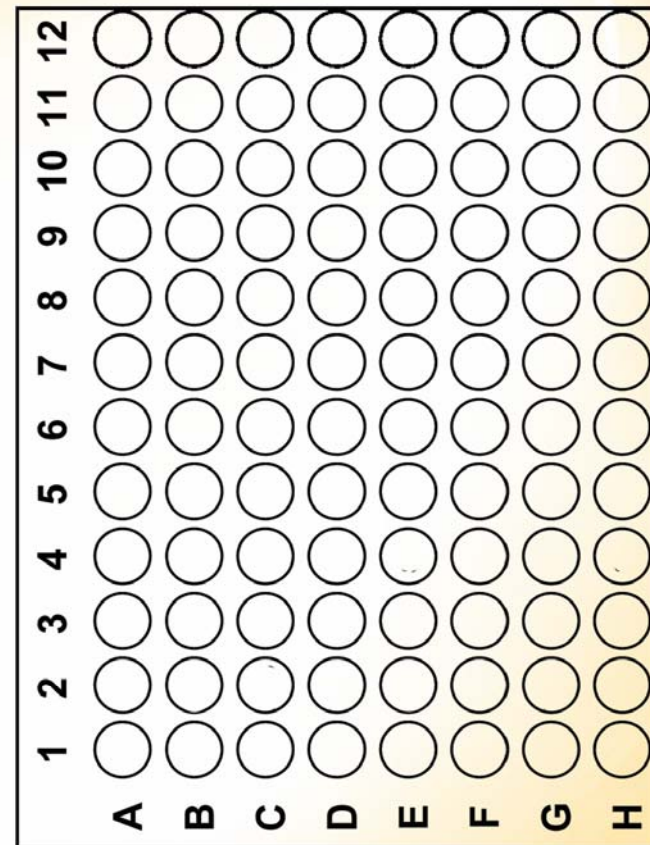
- > **Absorbance values are too low:**
 - organic contamination of water,
 - one reagent has not been dispensed,
 - incorrect preparation / dilution,
 - assay performed before reagents reached room temperature,
 - reading time not long enough.
- > **High signal and background in all wells:**
 - inefficient washing,
 - overdeveloping (incubation time should be reduced),
 - high ambient temperature.
- > **High dispersion of duplicates:**
 - poor pipetting technique,
 - irregular plate washing.

These are a few examples of troubleshooting that may occur. If you need further explanation, Bertin Pharma will be happy to assist you. Feel free to contact our technical support staff by phone (+33 (0)139 306 036), fax (+33 (0)139 306 299) or E-mail (bioreagent@bertinpharma.com), and be sure to indicate the batch number of the kit (see outside the box).

Bertin Pharma proposes EIA Training kit #B05005 and EIA workshop upon request. For further information, please contact our Marketing Department by phone (+33 (0)139 306 260) or E-mail (marketing@bertinpharma.com).

► Bibliography

1. Ding Q., Lu P., Xia Y., *et al.*
CXCL9: evidence and contradictions for its role in tumor Progression.
Cancer Medicine (2016); 5(11):3246–3259
2. Sgadari C., Farber J. M., Angiolillo A. L., *et al.*
Mig, the Monokine Induced By Interferon-gamma, Promotes Tumor Necrosis In Vivo.
Blood (1997), Vol 89, No 8: pp 2635-2643
3. Loetscher M., Gerber B., Loetscher P. *et al.*
Chemokine receptor specific for IP-10 and Mig: Structure, function and expression in activated T lymphocytes.
J Exp Med (1996) 184:963-969
4. Griffith J. W., Sokol C. L., Luster A. D.
Chemokines and Chemokine Receptors: Positioning Cells for Host Defense and Immunity.
2014 Annu. Rev. Immunol.. 32: 659–702



This document is copyrighted. All rights are reserved. This document may not, in whole or part, be copied, photocopied, reproduced, translated, or reduced to any electronic medium or machine readable form without the prior consent, in writing, from Bertin Pharma.



Bertin Pharma, over the last decades, has been developing and marketing over 100 biomarker assays, pre-analytical products, kits, antibodies and biochemicals thanks to its innovative work in research and development. Our core areas are orientated to inflammation, oxidative injury, endocrinology, diabetes, obesity, hypertension, neurodegenerative diseases, HIV, prion diseases, pharmacokinetics and metabolism.

Bertin Pharma is active worldwide either with direct sales or through our qualified and trained international distribution network from the United States to Japan.

We are able to provide you with local technical support to use at ease our products.

For further information, please send your request to
bioreagent@bertinpharma.com



care. innovate. deliver.

Parc d'activités du Pas du Lac - 10 bis avenue Ampère
F-78180 Montigny-le-Bretonneux - France
Tel: +33 (0)139 306 036 - Fax: +33 (0)139 306 299
bioreagent@bertinpharma.com - www.bertinpharma.com

—A **ENIM** Group Company—