

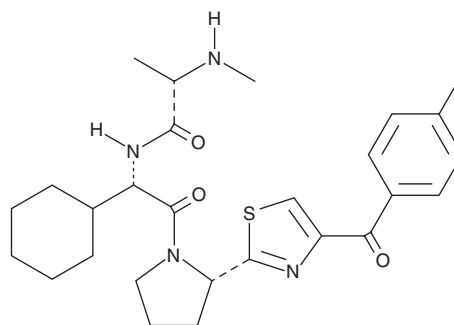
PRODUCT INFORMATION



LCL-161

Item No. 22420

CAS Registry No.: 1005342-46-0
Formal Name: N-[(1S)-1-cyclohexyl-2-[(2S)-2-[4-(4-fluorobenzoyl)-2-thiazolyl]-1-pyrrolidinyl]-2-oxoethyl]-2S-(methylamino)-propanamide
Synonym: NVP-LCL161
MF: C₂₆H₃₃FN₄O₃S
FW: 500.6
Purity: ≥98%
UV/Vis.: λ_{max}: 271 nm
Supplied as: A crystalline solid
Storage: -20°C
Stability: ≥2 years



Information represents the product specifications. Batch specific analytical results are provided on each certificate of analysis.

Laboratory Procedures

LCL-161 is supplied as a crystalline solid. A stock solution may be made by dissolving the LCL-161 in the solvent of choice. LCL-161 is soluble in organic solvents such as ethanol, DMSO, and dimethyl formamide (DMF), which should be purged with an inert gas. The solubility of LCL-161 in ethanol and DMSO is approximately 20 mg/ml and approximately 30 mg/ml in DMF.

Description

LCL-161 is a small molecule Smac mimetic that inhibits multiple inhibitor of apoptosis (IAP) family proteins.¹ As a single agent, LCL-161 inhibits growth of FLT3-ITD-expressing leukemia cells *via* induction of apoptosis with IC₅₀ values ranging from 0.5-4 μM. *In vivo*, LCL-161 enhances growth inhibition driven by PKC 412 (Item No. 10459) in a mouse Ba/F3-FLT3-ITD-luc+ leukemia xenograft model. It exhibits additive effects with the chemotherapeutic agents doxorubicin (Item No. 15007) and cytarabine (Item No. 16069). LCL-161 also inhibits growth of nilotinib-resistant leukemia cell lines and exhibits synergy with nilotinib (Item No. 10010422) in a Bcr-Abl expressing, 32D.p20-luc+ leukemia mouse xenograft model.

Reference

1. Weisberg, E., Ray, A., Barrett, R., *et al.* Smac mimetics: Implications for enhancement of targeted therapies in leukemia. *Leukemia* **24**(12), 2100-2109 (2010).

WARNING
THIS PRODUCT IS FOR RESEARCH ONLY - NOT FOR HUMAN OR VETERINARY DIAGNOSTIC OR THERAPEUTIC USE.

SAFETY DATA
This material should be considered hazardous until further information becomes available. Do not ingest, inhale, get in eyes, on skin, or on clothing. Wash thoroughly after handling. Before use, the user must review the complete Safety Data Sheet, which has been sent via email to your institution.

WARRANTY AND LIMITATION OF REMEDY
Buyer agrees to purchase the material subject to Cayman's Terms and Conditions. Complete Terms and Conditions including Warranty and Limitation of Liability information can be found on our website.

Copyright Cayman Chemical Company, 11/14/2017

CAYMAN CHEMICAL

1180 EAST ELLSWORTH RD
ANN ARBOR, MI 48108 · USA

PHONE: [800] 364-9897
[734] 971-3335

FAX: [734] 971-3640

CUSTSERV@CAYMANCHEM.COM
WWW.CAYMANCHEM.COM