

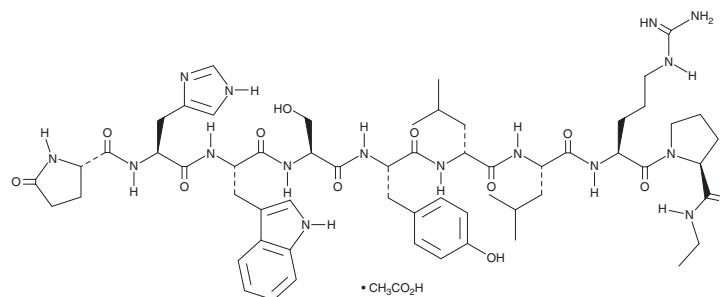
PRODUCT INFORMATION



Leuprorelin (acetate)

Item No. 22275

CAS Registry No.: 74381-53-6
Formal Name: 6-D-leucine-9-(N-ethyl-L-prolinamide)-1-9-luteinizing hormone-releasing factor (swine), monoacetate
MF: $C_{59}H_{84}N_{16}O_{12} \cdot C_2H_4O_2$
FW: 1,269.5
Purity: $\geq 98\%$
UV/Vis.: λ_{max} : 222, 276 nm
Supplied as: A crystalline solid
Storage: $-20^{\circ}C$
Stability: ≥ 4 years



Information represents the product specifications. Batch specific analytical results are provided on each certificate of analysis.

Laboratory Procedures

Leuprorelin (acetate) is supplied as a crystalline solid. A stock solution may be made by dissolving the leuprorelin (acetate) in the solvent of choice, which should be purged with an inert gas. Leuprorelin (acetate) is soluble in organic solvents such as ethanol, DMSO, and dimethyl formamide (DMF). The solubility of leuprorelin (acetate) in ethanol is approximately 0.25 mg/ml and approximately 30 mg/ml in DMSO and DMF.

Further dilutions of the stock solution into aqueous buffers or isotonic saline should be made prior to performing biological experiments. Ensure that the residual amount of organic solvent is insignificant, since organic solvents may have physiological effects at low concentrations. Organic solvent-free aqueous solutions of leuprorelin (acetate) can be prepared by directly dissolving the crystalline solid in aqueous buffers. The solubility of leuprorelin (acetate) in PBS (pH 7.2) is approximately 10 mg/ml. We do not recommend storing the aqueous solution for more than one day.

Description

Leuprorelin is a synthetic gonadotropin-releasing hormone (GnRH) receptor agonist.¹ It is a long-acting agent that, after an initial increase in sex hormone levels, decreases the level of circulating gonadotropins and sex hormones. Formulations containing leuprorelin have been used in the treatment of hormone-dependent prostate and breast cancers, endometriosis, and precocious puberty.²

References

1. Plosker, G.L. and Brogden, R.N. Leuprorelin. A review of its pharmacology and therapeutic use in prostatic cancer, endometriosis and other sex hormone-related disorders. *Drugs*. **48(6)**, 930-967 (1994).
2. Gravel, P., Samland, D., Löffler, M., *et al.* Two innovative pharmaceutical forms of leuprorelin: Results from 818 patients with advanced prostate cancer. *Adv. Ther.* **30(3)**, 271-285 (2013).

WARNING

THIS PRODUCT IS FOR RESEARCH ONLY - NOT FOR HUMAN OR VETERINARY DIAGNOSTIC OR THERAPEUTIC USE.

SAFETY DATA

This material should be considered hazardous until further information becomes available. Do not ingest, inhale, get in eyes, on skin, or on clothing. Wash thoroughly after handling. Before use, the user must review the [complete](#) Safety Data Sheet, which has been sent via email to your institution.

WARRANTY AND LIMITATION OF REMEDY

Buyer agrees to purchase the material subject to Cayman's Terms and Conditions. Complete Terms and Conditions including Warranty and Limitation of Liability information can be found on our website.

Copyright Cayman Chemical Company, 12/13/2022

CAYMAN CHEMICAL

1180 EAST ELLSWORTH RD

ANN ARBOR, MI 48108 · USA

PHONE: [800] 364-9897

[734] 971-3335

FAX: [734] 971-3640

CUSTSERV@CAYMANCHEM.COM

WWW.CAYMANCHEM.COM