

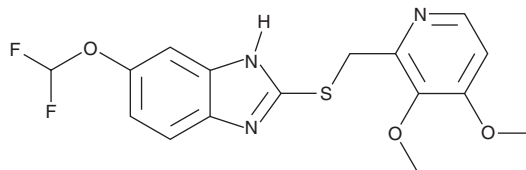
PRODUCT INFORMATION



Pantoprazole Sulfide

Item No. 22251

CAS Registry No.: 102625-64-9
Formal Name: 6-(difluoromethoxy)-2-[[[(3,4-dimethoxy-2-pyridinyl)methyl]thio]-1H-benzimidazole
Synonym: Pantoprazole thioether
MF: C₁₆H₁₅F₂N₃O₃S
FW: 367.4
Purity: ≥98%
UV/Vis.: λ_{max}: 295 nm
Supplied as: A crystalline solid
Storage: -20°C
Stability: ≥4 years



Information represents the product specifications. Batch specific analytical results are provided on each certificate of analysis.

Laboratory Procedures

Pantoprazole sulfide is supplied as a crystalline solid. A stock solution may be made by dissolving the pantoprazole sulfide in the solvent of choice, which should be purged with an inert gas. Pantoprazole sulfide is soluble in organic solvents such as ethanol, DMSO, and dimethyl formamide (DMF). The solubility of pantoprazole sulfide in ethanol is approximately 25 mg/ml and approximately 30 mg/ml in DMSO and DMF.

Pantoprazole sulfide is sparingly soluble in aqueous buffers. For maximum solubility in aqueous buffers, pantoprazole sulfide should first be dissolved in DMF and then diluted with the aqueous buffer of choice. Pantoprazole sulfide has a solubility of approximately 0.5 mg/ml in a 1:1 solution of DMF:PBS (pH 7.2) using this method. We do not recommend storing the aqueous solution for more than one day.

Description

Pantoprazole sulfide is a metabolite of the gastric H⁺/K⁺ ATPase pump inhibitor pantoprazole (Item No. 21345). Pantoprazole is metabolized by the cytochrome P450 (CYP) isomers CYP2C19 and CYP3A4 to form pantoprazole sulfide.¹

Reference

1. Shi, S. and Klotz, U. Proton pump inhibitors: An update of their clinical use and pharmacokinetics. *Eur, J, Clin. Pharmacol.* **64**(10), 935-951 (2008).

WARNING

THIS PRODUCT IS FOR RESEARCH ONLY - NOT FOR HUMAN OR VETERINARY DIAGNOSTIC OR THERAPEUTIC USE.

SAFETY DATA

This material should be considered hazardous until further information becomes available. Do not ingest, inhale, get in eyes, on skin, or on clothing. Wash thoroughly after handling. Before use, the user must review the complete Safety Data Sheet, which has been sent via email to your institution.

WARRANTY AND LIMITATION OF REMEDY

Buyer agrees to purchase the material subject to Cayman's Terms and Conditions. Complete Terms and Conditions including Warranty and Limitation of Liability information can be found on our website.

Copyright Cayman Chemical Company, 11/09/2022

CAYMAN CHEMICAL

1180 EAST ELLSWORTH RD
ANN ARBOR, MI 48108 · USA

PHONE: [800] 364-9897
[734] 971-3335

FAX: [734] 971-3640

CUSTSERV@CAYMANCHEM.COM
WWW.CAYMANCHEM.COM