

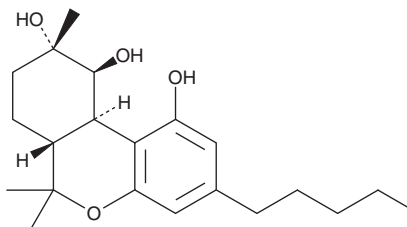
PRODUCT INFORMATION



Cannabiripsol

Item No. 21728

CAS Registry No.: 72236-32-9
Formal Name: 6aR,7,8,9S,10S,10aR-hexahydro-6,6,9-trimethyl-3-pentyl-6H-dibenzo[b,d]pyran-1,9,10-triol
Synonym: CBR
MF: C₂₁H₃₂O₄
FW: 348.5
Purity: ≥95%
Supplied as: A 1 mg/ml solution in acetonitrile
Storage: -20°C
Stability: ≥4 years



Information represents the product specifications. Batch specific analytical results are provided on each certificate of analysis.

Description

Cannabiripsol (Item No. 21728) is an analytical reference standard categorized as a phytocannabinoid.^{1,2} This product is intended for research and forensic applications.

References

1. Radwan, M.M., ElSohly, M.A., El-Alfry, A.T., *et al.* Isolation and pharmacological evaluation of minor cannabinoids from high-potency *Cannabis sativa*. *J. Nat. Prod.* **78(6)**, 1271-1276 (2015).
2. Husni, A.S., McCurdy, C.R., Radwan, M.M., *et al.* Evaluation of phytocannabinoids from high potency *Cannabis sativa* using in vitro bioassays to determine structure-activity relationships for cannabinoid receptor 1 and cannabinoid receptor 2. *Med. Chem. Res.* **23(9)**, 4295-4300 (2014).

WARNING

THIS PRODUCT IS FOR RESEARCH ONLY - NOT FOR HUMAN OR VETERINARY DIAGNOSTIC OR THERAPEUTIC USE.

SAFETY DATA

This material should be considered hazardous until further information becomes available. Do not ingest, inhale, get in eyes, on skin, or on clothing. Wash thoroughly after handling. Before use, the user must review the [complete](#) Safety Data Sheet, which has been sent via email to your institution.

WARRANTY AND LIMITATION OF REMEDY

Buyer agrees to purchase the material subject to Cayman's Terms and Conditions. Complete Terms and Conditions including Warranty and Limitation of Liability information can be found on our website.

Copyright Cayman Chemical Company, 11/12/2025

CAYMAN CHEMICAL

1180 EAST ELLSWORTH RD
ANN ARBOR, MI 48108 · USA

PHONE: [800] 364-9897
[734] 971-3335

FAX: [734] 971-3640

CUSTSERV@CAYMANCHEM.COM
WWW.CAYMANCHEM.COM