

PRODUCT INFORMATION



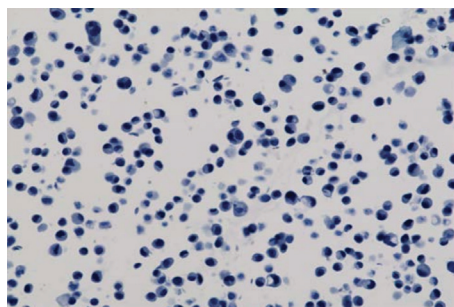
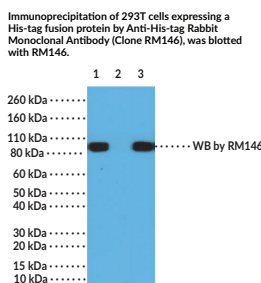
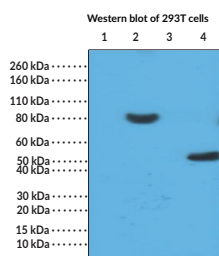
Anti-His-tag Rabbit Monoclonal Antibody (Clone RM146)

Item No. 20725

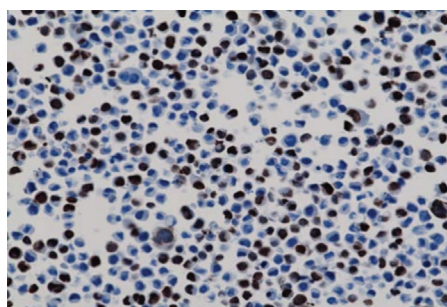
Overview and Properties

- Contents:** This vial contains 100 µg of protein A affinity-purified antibody from an animal origin free culture supernatant
- Immunogen:** Mixture of a peptide with 6xHis-tag at the N-terminus and another peptide with 6xHis-tag at the C-terminus
- Cross Reactivity:** (+) Recombinant proteins containing the 6xHis-tag or 10xHis-tag fused to either the amino or carboxy terminus; (-) Other endogenous protein in mammalian cells or bacteria
- Species Reactivity:** (+) All species
- Form:** Liquid
- Storage:** -20°C (as supplied)
- Stability:** As supplied, 1 year from the QC date provided on the Certificate of Analysis, when stored properly
- Storage Buffer:** 50% glycerol/PBS with 1% BSA and 0.09% sodium azide
- Clone:** RM146
- Host:** Rabbit
- Isotype:** IgG
- Applications:** Western blot (WB), Flow cytometry (FC), Immunocytochemistry (ICC), Immunohistochemistry (IHC) and Immunoprecipitation (IP); the recommended starting dilution for FC, ICC, and IP is 0.5 - 2 µg/ml, and 0.1 - 1 µg/ml for IHC and WB. Other applications were not tested, therefore optimal working concentration/dilution should be determined empirically.

Images



Immunohistochemistry staining of naïve HepG2 cells (negative control) using Anti-His-tag Rabbit Monoclonal Antibody (Clone RM146)



Immunohistochemistry staining of 293T cells expressing His-tag nuclear protein X, using Anti-His-tag Rabbit Monoclonal Antibody (Clone RM146).

WARNING
THIS PRODUCT IS FOR RESEARCH ONLY - NOT FOR HUMAN OR VETERINARY DIAGNOSTIC OR THERAPEUTIC USE.

SAFETY DATA
This material should be considered hazardous until further information becomes available. Do not ingest, inhale, get in eyes, on skin, or on clothing. Wash thoroughly after handling. Before use, the user must review the complete Safety Data Sheet, which has been sent via email to your institution.

WARRANTY AND LIMITATION OF REMEDY
Buyer agrees to purchase the material subject to Cayman's Terms and Conditions. Complete Terms and Conditions including Warranty and Limitation of Liability information can be found on our website.

Copyright Cayman Chemical Company, 12/22/2016

CAYMAN CHEMICAL
1180 EAST ELLSWORTH RD
ANN ARBOR, MI 48108 · USA
PHONE: [800] 364-9897
[734] 971-3335
FAX: [734] 971-3640
CUSTSERV@CAYMANCHEM.COM
WWW.CAYMANCHEM.COM

PRODUCT INFORMATION



Description

Anti-His-tag Rabbit Monoclonal Antibody (Clone RM146) is a probe for immunochemical detection of His tags on recombinant proteins by western blot, immunoprecipitation, immunohistochemistry, immunocytochemistry, or flow cytometry. Recombinant proteins are routinely labeled with affinity tags, such as poly-histidine (poly-His), to facilitate both their detection and purification. Poly-His tags are often the tag of choice due to their small size, less potential to interfere in protein folding, weak immunogenicity, and high affinity for Ni²⁺.

CAYMAN CHEMICAL
1180 EAST ELLSWORTH RD
ANN ARBOR, MI 48108 · USA
PHONE: [800] 364-9897
[734] 971-3335
FAX: [734] 971-3640
CUSTSERV@CAYMANCHEM.COM
WWW.CAYMANCHEM.COM