

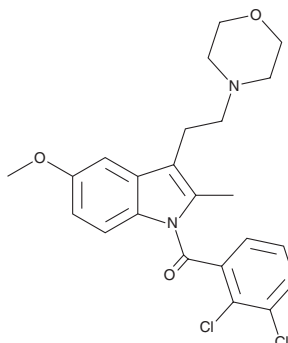
# PRODUCT INFORMATION



**GW 405833**

Item No. 20219

**CAS Registry No.:** 180002-83-9  
**Formal Name:** (2,3-dichlorophenyl)[5-methoxy-2-methyl-3-[2-(4-morpholinyl)ethyl]-1H-indol-1-yl]-methanone  
**Synonym:** L-768,242  
**MF:** C<sub>23</sub>H<sub>24</sub>Cl<sub>2</sub>N<sub>2</sub>O<sub>3</sub>  
**FW:** 447.4  
**Purity:** ≥98%  
**UV/Vis.:** λ<sub>max</sub>: 264, 315 nm  
**Supplied as:** A crystalline solid  
**Storage:** -20°C  
**Stability:** ≥4 years



Information represents the product specifications. Batch specific analytical results are provided on each certificate of analysis.

## Laboratory Procedures

GW 405833 is supplied as a crystalline solid. A stock solution may be made by dissolving the GW 405833 in the solvent of choice, which should be purged with an inert gas. GW 405833 is soluble in organic solvents such as ethanol, DMSO, and dimethyl formamide (DMF). The solubility of GW 405833 in these solvents is approximately 0.3, 5, and 10 mg/ml, respectively.

GW 405833 is sparingly soluble in aqueous buffers. For maximum solubility in aqueous buffers, GW 405833 should first be dissolved in DMF and then diluted with the aqueous buffer of choice. GW 405833 has a solubility of approximately 0.2 mg/ml in a 1:4 solution of DMF:PBS (pH 7.2) using this method. We do not recommend storing the aqueous solution for more than one day.

## Description

GW 405833 is a partial agonist of the cannabinoid CB<sub>2</sub> receptor (EC<sub>50</sub> = 0.65 nM).<sup>1</sup> It is selective for CB<sub>2</sub>, binding with a K<sub>i</sub> value of 14 nM compared to that of CB<sub>1</sub> with a K<sub>i</sub> value of 2.04 μM.<sup>1</sup> GW 405833 demonstrates anti-inflammatory and antihyperalgesic properties in animal models of inflammation and pain.<sup>1</sup>

## Reference

1. Guindon, J. and Hohmann, A.G. Cannabinoid CB<sub>2</sub> receptors: A therapeutic target for the treatment of inflammatory and neuropathic pain. *Br. J. Pharmacol.* **153**(2), 319-334 (2008).

### WARNING

THIS PRODUCT IS FOR RESEARCH ONLY - NOT FOR HUMAN OR VETERINARY DIAGNOSTIC OR THERAPEUTIC USE.

### SAFETY DATA

This material should be considered hazardous until further information becomes available. Do not ingest, inhale, get in eyes, on skin, or on clothing. Wash thoroughly after handling. Before use, the user must review the complete Safety Data Sheet, which has been sent via email to your institution.

### WARRANTY AND LIMITATION OF REMEDY

Buyer agrees to purchase the material subject to Cayman's Terms and Conditions. Complete Terms and Conditions including Warranty and Limitation of Liability information can be found on our website.

Copyright Cayman Chemical Company, 10/21/2022

## CAYMAN CHEMICAL

1180 EAST ELLSWORTH RD

ANN ARBOR, MI 48108 · USA

**PHONE:** [800] 364-9897

[734] 971-3335

**FAX:** [734] 971-3640

CUSTSERV@CAYMANCHEM.COM

WWW.CAYMANCHEM.COM