

## Anti Prion Protein Monoclonal Antibody SAF 70

### ORDERING INFORMATION

**Catalogue Number:** A03206

**Size:** 200 µg IgG

**Stability:** ≥ 2 years at -20 °C

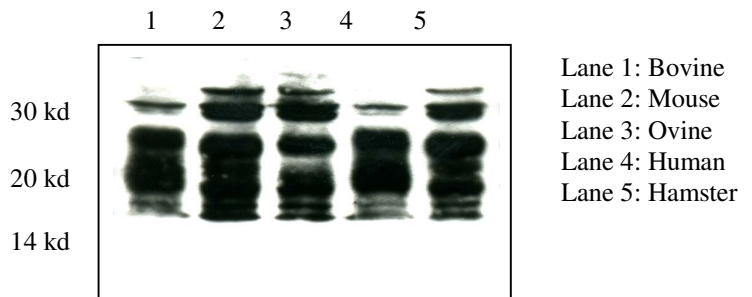
**Storage:** -20°C

**Shipping:** dry ice

- **CONTENTS:** This vial contains 200 µg of lyophilized IgG containing 200 µg of BSA.
- **ISOTYPE:** IgG2b
- **HOST:** Mouse
- **ANTIGEN:** This anti-Prion Protein Monoclonal Antibody was raised against a preparation of SAF (scrapie associated fibrils) from infected hamster brain.
- **EPI TOPE:** This antibody recognises the protein sequence within amino acids 142-160 (human numbering).
- **CROSS REACTIVITY:** -PrPc  
(+) Hamster, (+) Mouse, (+) Bovine, (+) Ovine, (+) Human.
- **RECOMMENDED USE:** Western blot for hamster, mouse, bovine, ovine and human PrP.
- **APPLICATION:** Reconstitute the content of the vial in 1 mL of water. For western blot analysis of PrPc, dilute the antibody to a final concentration of 1 µg/mL.

**For research laboratory  
use only.**

**Not for human  
diagnostic use.**



### For further reading

1. Nishida N., *et al.* Successful Transmission of Three Mouse-Adapted Scrapie Strains to Murine Neuroblastoma Cell Lines Overexpressing Wild-Type Mouse Prion Protein. *Journal of Virology* 320-325 (January 2000).
2. Vincent B., *et al.* Phorbol Ester-regulated Cleavage of Normal Prion Protein in HEK293 Human Cells and Murine Neurons. *The journal of Biological Chemistry*. Vol. **275**, No 45, Issue of November 10, pp.35612-35616 (2000).
3. Demart S., *et al.* New Insight into Abnormal Prion Protein Using Monoclonal Antibodies. *Biochemical and Biophysical Research Communications* **265**, 652-657 (1999).

**Should you wish further information, do not hesitate to contact us.**

**bertin** group • Parc d'Activités du Pas du Lac • 10 bis avenue Ampère - F-78180 Montigny Le Bretonneux Cedex  
Tel: 33 (0)1 39 30 62 60 • Fax: 33 (0)1 39 30 62 99 • E-Mail: sales@spibio.com  
Web : www.spibio.com

