

Anti Prion Protein Monoclonal Antibody SAF 32

ORDERING INFORMATION

Catalogue Number: A03202

Size: 200 µg IgG

Stability: ≥ 2 years at -20 °C

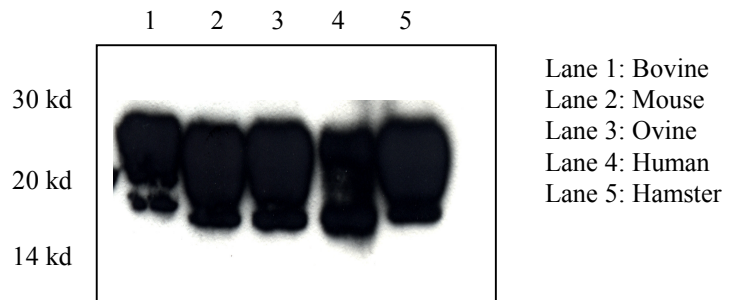
Storage: -20°C

Shipping: dry ice

**For research laboratory
use only.**

**Not for human
diagnostic use.**

- **CONTENTS:** This vial contains 200 µg of lyophilized IgG containing 200 µg of BSA.
- **ISOTYPE:** IgG2b
- **HOST:** Mouse
- **ANTIGEN:** This anti-Prion Protein Monoclonal Antibody was raised against a preparation of SAF (scrapie associated fibrils) from infected hamster brain.
- **EPITOPE:** This antibody recognises the octo-repeat region located in the N-terminal part of PrP.
- **CROSS REACTIVITY:** -PrPc
(+) Hamster, (+) Mouse, (+) Bovine, (+) Ovine, (+) Human.
- **RECOMMENDED USE:** Western blot, immunohistochemistry, EIA and flow cytometry for hamster, mouse, bovine, ovine and human PrP.
- **APPLICATION:** Reconstitute the content of the vial in 1 mL of water.
For immunohistochemistry, EIA and flow cytometry, the optimal working must be determined empirically (currently between 0.1 and 1 µg/mL).
For western blot analysis of PrPc, dilute to a final concentration of 1 µg/mL.



For further reading

1. Haeblerlé A.M. *et al.* Synaptic Prion Protein Immuno-Reactivity in the Rodent Cerebellum. *Microscopy research and Technique* **50**:66-75 (2000).
2. Vincent B., *et al.* Phorbol Ester-regulated Cleavage of Normal Prion Protein in HEK293 Human Cells and Murine Neurons. *The journal of Biological Chemistry*. Vol. **275**, No 45, Issue of November 10, pp.35612-35616 (2000).

Should you wish further information, do not hesitate to contact us.

