



### Rat anti-Mouse CD366 (TIM-3) conjugated to R-PE

Product Number	D5-127
Concentration	100ug/mL
Amount	100ug
Host	Rat
Isotype	IgG1, $\kappa$
Clone	B8.2C12
Store at	+4°C

#### Form/Shipping & Storage

Supplied as a lyophilized powder. Upon receipt, store at 2-8°C in the dark. Phycobiliproteins are sensitive to freeze-thaw cycles: after reconstitution, store at 2-8°C in the dark - do not freeze.

#### Handling

Avoid exposure to heat and light. Prior to use, reconstitute to 1 ml with distilled deionized water, vortex and allow it to sit on ice for 20 minutes.

#### Buffer

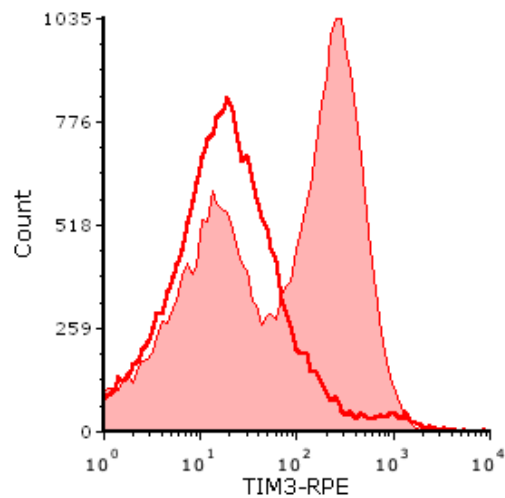
Upon reconstitution, the product is in 100mM sodium phosphate (pH 7.4), 50 mM sucrose, 100 mM sodium chloride, 0.1% BSA, and 2 mM sodium azide. The concentration of the conjugate is 100  $\mu$ g/ml.

#### Stability

The material is stable for up to one year if stored at 2-8°C in the dark. If further dilution of the conjugate is required, use diluted material within one week.

#### Note

For research use only, not for diagnostic or therapeutic use.



CD57BL/6 mouse splenocytes stained with R-PE conjugated anti-mouse CD366 Mab (filled histogram) or with matched isotype control (open histogram). Dilution = 5ug/test