

Mouse anti-fish CYP1A peptide Monoclonal antibody, C10-7

General description

This product consists of affinity-purified mouse monoclonal antibodies against peptide 277-294 of rainbow trout cytochrome P450 1A (CYP1A).

Immunogen source: A synthetic peptide corresponding to amino acid sequence 277-294 of rainbow trout (*Oncorhynchus mykiss*) CYP1A, coupled to the carrier protein keyhole limpet hemocyanin (KLH).

Subclass/isotype: IgG₃-kappa.

Specificity

The monoclonal antibody C10-7 cross-reacts with CYP1A in liver samples from a variety of fish species, including rainbow trout (*Oncorhynchus mykiss*), Atlantic salmon (*Salmo salar*), carp (*Cyprinus carpio*), turbot (*Scophthalmus maximus*) and Atlantic cod (*Gadus morhua*). The degree of cross-reactivity differs between species and with the methods employed.

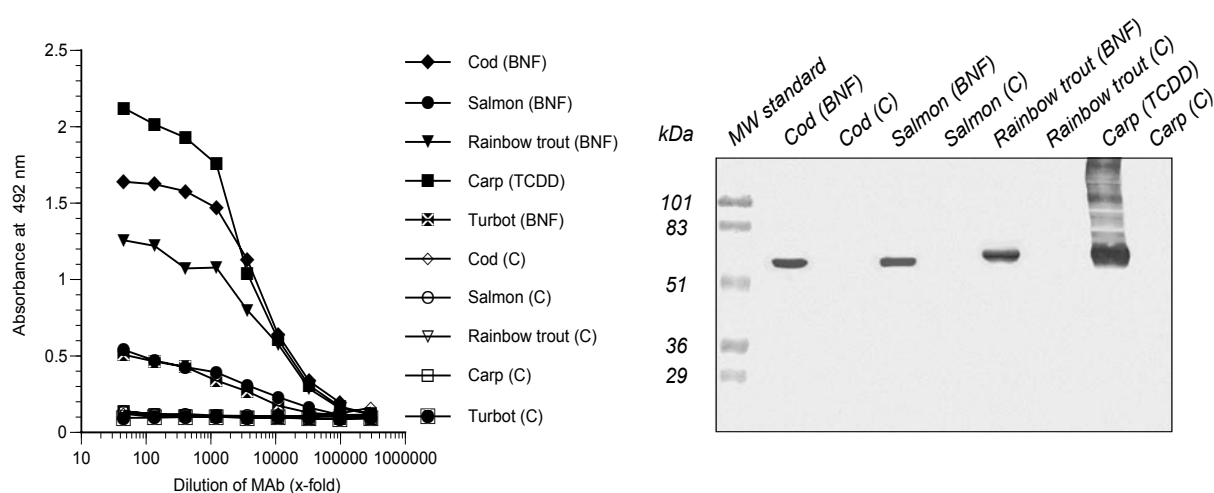
Applications

The monoclonal antibody C10-7 works well in both ELISA and western blot for a number of species. The antibody also works well in immunohistochemistry. Since assay conditions vary, the optimum dilution should be determined for each particular application. *Note*: The antibody is dissolved in a buffer containing BSA, and is therefore not recommended to use for coating.

Normal dilution range:

ELISA: 1:300 - 1:1000

Western blot: 1:50 - 1:500



ELISA

Coating: Liver microsomes (10 µg protein/ml) from β-naphthoflavone treated (BNF), tetrachloro-dibenzo-p-dioxin treated (TCDD) or control (C) fish.

Primary antibody: C10-7

Western blot

Samples: Liver microsomes (10 µg protein/well) from β-naphthoflavone treated (BNF), tetrachlorodibenzo-p-dioxin treated (TCDD) or control (C) fish.

Primary antibody: C10-7 diluted 1:3000