

## Rabbit anti-wolffish Vtg Polyclonal antibody, CS-3

### General description

This product consists of rabbit polyclonal antibodies (affinity-purified IgG fraction) against vitellogenin from wolffish (*Anarhichas lupus*).

Immunogen source: Vitellogenin purified from plasma of 17 $\beta$ -estradiol treated wolffish (*Anarhichas lupus*).

### Specificity

The polyclonal antibody CS-3 binds with high affinity to vitellogenin in plasma samples from wolffish (*Anarhichas lupus*). The antibody also cross-reacts with vitellogenin from spotted wolffish (*Anarhichas minor*), wrasse (*Ctenolabrus rupestris*), common carp (*Cyprinus carpio*) and tilapia (*Oreochromis niloticus*). The degree of cross-reactivity differs between species and with the methods employed.

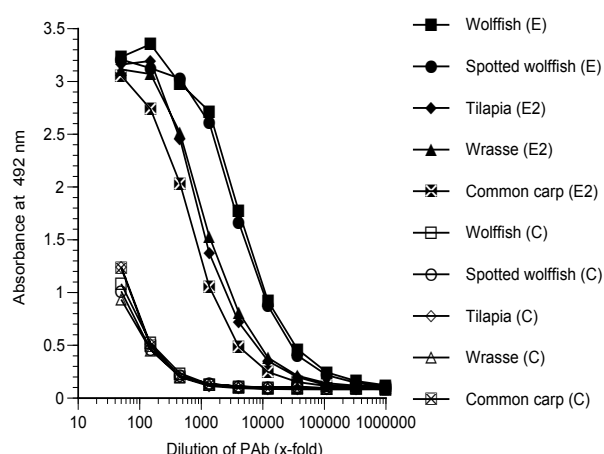
### Applications

The polyclonal antibody CS-3 works well in both ELISA and western blot for a number of species. Since assay conditions vary, the optimum dilution should be determined for each particular application. *Note:* The antibody is dissolved in a buffer containing BSA, and is therefore not recommended to use for coating.

Normal dilution range:

ELISA: 1:200 - 1:2000

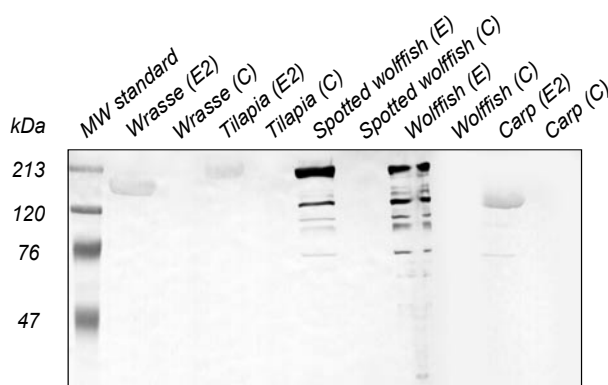
Western blot: 1:200 - 1:2500



### ELISA

Coating: Plasma (diluted 1:1000) from 17 $\beta$ -estradiol treated (E2), sexually mature female (E) or control (C) fish.

Primary antibody: CS-3



### Western blot

Samples: Plasma (1:200, 10  $\mu$ l/well) from 17 $\beta$ -estradiol treated (E2), sexually mature female (E) or control (C) fish.

Primary antibody: CS-3 diluted 1:2500