

## Mouse anti-salmon Vtg Monoclonal antibody, KB-1

### General description

This product consists of affinity-purified mouse monoclonal antibodies against vitellogenin from Atlantic salmon (*Salmo salar*).

Immunogen source: Vitellogenin purified from plasma of 17 $\beta$ -estradiol treated Atlantic salmon (*Salmo salar*).

Subclass/isotype: IgG<sub>1</sub>-kappa.

### Specificity

The monoclonal antibody KB-1 binds with high affinity to vitellogenin from Atlantic salmon (*Salmo salar*) and other *Salmo* spp. The antibody cross-reacts with vitellogenin from brown trout (*Salmo trutta*), but not with vitellogenin from rainbow trout (*Oncorhynchus mykiss*), Arctic char (*Salvelinus alpinus*), Atlantic cod (*Gadus morhua*), turbot (*Scophthalmus maximus*) or halibut (*Hippoglossus hippoglossus*).

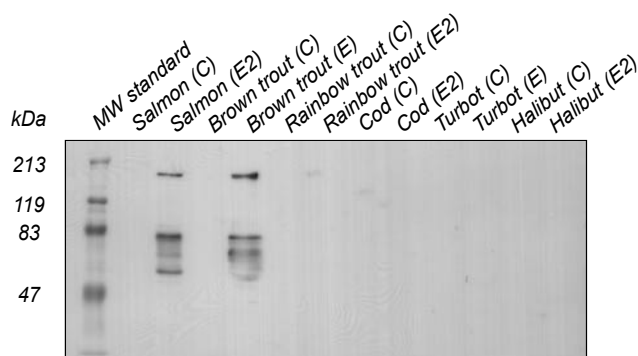
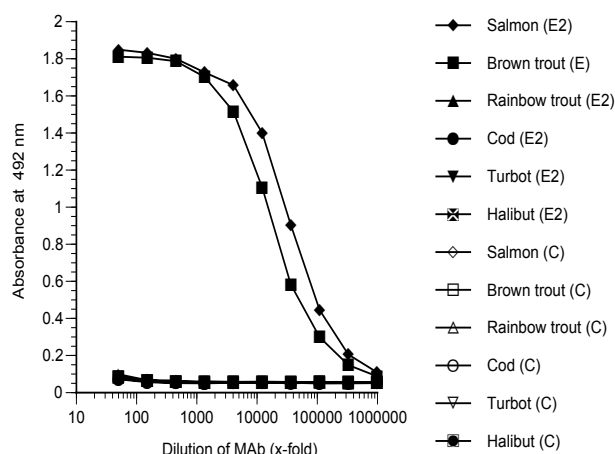
### Applications

The monoclonal antibody KB-1 works well in both ELISA and western blot for a number of salmonid species. Since assay conditions vary, the optimum dilution should be determined for each particular application. *Note*: The antibody is dissolved in a buffer containing BSA, and is therefore not recommended to use for coating.

Normal dilution range:

ELISA: 1:100 - 1:5000

Western blot: 1:100 - 1:5000



### ELISA

Coating: Plasma (diluted 1:1000) from 17 $\beta$ -estradiol treated (E2), sexually mature female (E) or control (C) fish.

Primary antibody: KB-1

### Western blot

Samples: Plasma (1:200, 7  $\mu$ l/well) from 17 $\beta$ -estradiol treated (E2), sexually mature female (E) or control (C) fish.

Primary antibody: KB-1 diluted 1:3000