

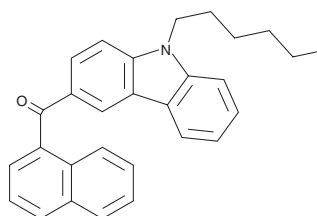
PRODUCT INFORMATION



EG2201

Item No. 16884

CAS Registry No.: 2365471-72-1
Formal Name: [9-(5-fluoropentyl)-9H-carbazol-3-yl]-1-naphthalenyl-methanone
MF: C₂₈H₂₄FNO
FW: 409.5
Purity: ≥98%
Supplied as: A neat solid
Storage: -20°C
Stability: ≥2 years



Information represents the product specifications. Batch specific analytical results are provided on each certificate of analysis.

Description

AM2201 (Item No. 10707) is a potent synthetic cannabinoid (CB) with K_i values of 1.0 and 2.6 nM for the central cannabinoid (CB₁) and peripheral cannabinoid (CB₂) receptors, respectively.¹ EG2201 is an analog of AM2201 that has a benzene ring attached to the aminoalkylindole group, positioned adjacent to the naphthoyl group. The physiological and toxicological properties of this compound have not been evaluated. This product is intended for forensic and research applications.

This product is qualified as a Reference Material that has been manufactured and tested to ISO/IEC 17025 and ISO 17034 international standards.

Reference

1. Makriyannis, A. and Deng, H. Cannabimimetic indole derivatives. *University of Connecticut*. WO01/28557A1 (2001).

WARNING

THIS PRODUCT IS FOR RESEARCH ONLY - NOT FOR HUMAN OR VETERINARY DIAGNOSTIC OR THERAPEUTIC USE.

SAFETY DATA

This material should be considered hazardous until further information becomes available. Do not ingest, inhale, get in eyes, on skin, or on clothing. Wash thoroughly after handling. Before use, the user must review the [complete](#) Safety Data Sheet, which has been sent via email to your institution.

WARRANTY AND LIMITATION OF REMEDY

Buyer agrees to purchase the material subject to Cayman's Terms and Conditions. Complete Terms and Conditions including Warranty and Limitation of Liability information can be found on our website.

Copyright Cayman Chemical Company, 03/31/2021

CAYMAN CHEMICAL

1180 EAST ELLSWORTH RD
ANN ARBOR, MI 48108 · USA

PHONE: [800] 364-9897
[734] 971-3335

FAX: [734] 971-3640

CUSTSERV@CAYMANCHEM.COM
WWW.CAYMANCHEM.COM