

# PRODUCT INFORMATION



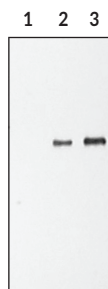
## HA Polyclonal Antibody

Item No. 162200

### Overview and Properties

<b>Contents:</b>	This vial contains peptide affinity-purified polyclonal antibody lyophilized from 500 µl.
<b>Synonym:</b>	Heme Agglutinin
<b>Immunogen:</b>	CYPYDVPDYA peptide sequence
<b>Form:</b>	Lyophilized
<b>Storage:</b>	-20°C (as supplied)
<b>Stability:</b>	≥3 years
<b>Storage Buffer:</b>	TBS, pH 7.4, when reconstituted with 500 µl double distilled water
<b>Host:</b>	Rabbit
<b>Application:</b>	Western blot (WB); the recommended starting dilution is 1:200. This antibody does not work for immunoprecipitation. Other applications were not tested, therefore optimal working concentration/dilution should be determined empirically.

### Image



Lane 1: COS-7 cell lysate (30 µg)  
Lane 2: HA-expressed protein/lysate (0.1 µg)  
Lane 3: HA-expressed protein/lysate (0.2 µg)

**WARNING**  
THIS PRODUCT IS FOR RESEARCH ONLY - NOT FOR HUMAN OR VETERINARY DIAGNOSTIC OR THERAPEUTIC USE.

**SAFETY DATA**  
This material should be considered hazardous until further information becomes available. Do not ingest, inhale, get in eyes, on skin, or on clothing. Wash thoroughly after handling. Before use, the user must review the [complete](#) Safety Data Sheet, which has been sent via email to your institution.

**WARRANTY AND LIMITATION OF REMEDY**  
Buyer agrees to purchase the material subject to Cayman's Terms and Conditions. Complete Terms and Conditions including Warranty and Limitation of Liability information can be found on our website.

Copyright Cayman Chemical Company, 11/17/2023

**CAYMAN CHEMICAL**  
1180 EAST ELLSWORTH RD  
ANN ARBOR, MI 48108 · USA  
PHONE: [800] 364-9897  
[734] 971-3335  
FAX: [734] 971-3640  
CUSTSERV@CAYMANCHEM.COM  
WWW.CAYMANCHEM.COM

# PRODUCT INFORMATION



## Description

---

The HA epitope is an expression tag commonly used in protein expression experiments. Compared to its corresponding native protein, a HA-tagged protein will migrate at a larger size on SDS-PAGE, which is equivalent to the size of the epitope tag. The size of the HA epitope may vary depending on the expression vector being utilized, but usually ranges from 3 to 5 kDa. Cayman Chemical's HA polyclonal antibody will recognize proteins expressed with both N-terminal and C-terminal HA tags.

CAYMAN CHEMICAL  
1180 EAST ELLSWORTH RD  
ANN ARBOR, MI 48108 · USA  
PHONE: [800] 364-9897  
[734] 971-3335  
FAX: [734] 971-3640  
CUSTSERV@CAYMANCHEM.COM  
WWW.CAYMANCHEM.COM