

PRODUCT INFORMATION



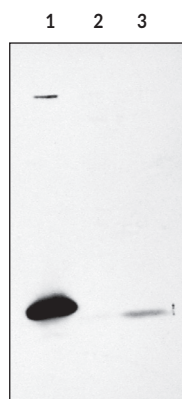
Caspase-9 Polyclonal Antibody

Item No. 160790

Overview and Properties

Contents:	This vial contains 500 µl of peptide-affinity purified polyclonal antibody.
Synonyms:	Apaf-3, ICE-LAP6, Mch6
Immunogen:	Synthetic peptide from the C-terminal region of human protein
Species Reactivity:	(+) Human Caspase-9; other species not tested
Uniprot No.:	P55211
Form:	Liquid
Storage:	-20°C (as supplied)
Stability:	≥3 year
Storage Buffer:	PBS, pH 7.2, with 0.02% sodium azide
Host:	Rabbit
Applications:	Western blot (WB); the recommended starting dilution is 1:200. Other applications were not tested, therefore optimal working concentration/dilution should be determined empirically.

Image



Lane 1: Caspase-9 transfected
293T cell lysate (20 µg)
Lane 2: 293T cell lysate (50 µg)
Lane 3: HeLa cell lysate (50 µg)

WARNING
THIS PRODUCT IS FOR RESEARCH ONLY - NOT FOR HUMAN OR VETERINARY DIAGNOSTIC OR THERAPEUTIC USE.

SAFETY DATA
This material should be considered hazardous until further information becomes available. Do not ingest, inhale, get in eyes, on skin, or on clothing. Wash thoroughly after handling. Before use, the user must review the complete Safety Data Sheet, which has been sent via email to your institution.

WARRANTY AND LIMITATION OF REMEDY
Buyer agrees to purchase the material subject to Cayman's Terms and Conditions. Complete Terms and Conditions including Warranty and Limitation of Liability information can be found on our website.

Copyright Cayman Chemical Company, 10/23/2023

CAYMAN CHEMICAL
1180 EAST ELLSWORTH RD
ANN ARBOR, MI 48108 · USA
PHONE: [800] 364-9897
[734] 971-3335
FAX: [734] 971-3640
CUSTSERV@CAYMANCHEM.COM
WWW.CAYMANCHEM.COM

PRODUCT INFORMATION



Description

Apoptosis is related to many diseases and is induced by a family of cell death receptors and their ligands. Cell death signals are transduced by death domain containing adapter molecules and members of the caspase family of proteases. A novel member in the caspase family was recently identified and designated ICE-LAP6, Mch6, and Apaf3.¹⁻³ Caspase-9 and Apaf-1 bind to each other, which leads to caspase-9 activation.³ Caspase-9 is also activated by granzyme B and CPP32.^{1,2} Activated caspase-9 cleaves and activates caspase-3, one of the key proteases responsible for the proteolytic cleavage of many key proteins in apoptosis.³ Caspase-9 plays a central role in cell death induced by a wide variety of apoptosis inducers including TNF- α , TRAIL, anti-CD-95, FADD, and TRADD.⁴ Caspase-9 is expressed in a variety of human tissues.^{1,2}

References

1. Srinivasula, S.M., Fernandes-Alnemri, T., Zangrilli, J., *et al.* The Ced-3/interleukin 1 β converting enzyme-like homolog Mch6 and the lamin-cleaving enzyme Mch2a are substrates for the apoptotic mediator CPP32. *J. Biol. Chem.* **271(43)**, 27099-27106 (1996).
2. Duan, H., Orth, K., Chinnaiyan, A.M., *et al.* ICE-LAP6, a novel member of the ICE/Ced-3 gene family, is activated by the cytotoxic T cell protease granzyme B. *J. Biol. Chem.* **271(28)**, 16720-16724 (1996).
3. Li, P., Nijhawan, D., Budihardjo, I., *et al.* Cytochrome c and dATP-dependent formation of Apaf-1/caspase-9 complex initiates an apoptotic protease cascade. *Cell* **91(4)**, 479-489 (1997).
4. Pan, G., O'Rourke, K., and Dixit, V.M. Caspase-9, Bcl-XL, and Apaf-1 form a ternary complex. *J. Biol. Chem.* **273(10)**, 5841-5845 (1998).

CAYMAN CHEMICAL
1180 EAST ELLSWORTH RD
ANN ARBOR, MI 48108 · USA
PHONE: [800] 364-9897
[734] 971-3335
FAX: [734] 971-3640
CUSTSERV@CAYMANCHEM.COM
WWW.CAYMANCHEM.COM