

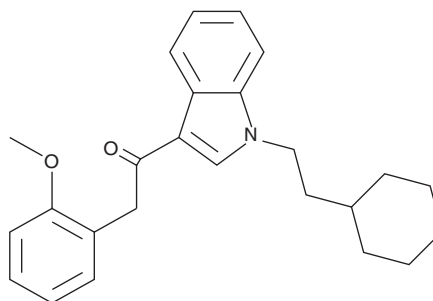
PRODUCT INFORMATION



RCS-8 (exempt preparation)

Item No. 15663

CAS Registry No.: 1345970-42-4
Formal Name: 1-(1-(2-cyclohexylethyl)-1H-indol-3-yl)-2-(2-methoxyphenyl)ethanone
Synonyms: BTM-8, SR-18
MF: C₂₅H₂₉NO₂
FW: 375.5
Purity: ≥98%
UV/Vis.: λ_{max}: 213, 246, 304 nm
Supplied as: A 1 mg/ml solution in methanol
Storage: -20°C
Stability: ≥3 years



Information represents the product specifications. Batch specific analytical results are provided on each certificate of analysis.

Description

RCS-8 is a synthetic cannabinoid that has been identified as a component of several different herbal incense products. As an analog of JWH 250 (Item No. 13634), a cyclohexylethyl ring at the indole nitrogen replaces the pentyl chain. Though speculated to be less potent than JWH 250, the biological activity of RCS-8 has not been reported. RCS-8 (exempt preparation) (Item No. 15663) is provided as a DEA exempt preparation. This product is intended for research and forensic applications.

WARNING

THIS PRODUCT IS FOR RESEARCH ONLY - NOT FOR HUMAN OR VETERINARY DIAGNOSTIC OR THERAPEUTIC USE.

SAFETY DATA

This material should be considered hazardous until further information becomes available. Do not ingest, inhale, get in eyes, on skin, or on clothing. Wash thoroughly after handling. Before use, the user must review the [complete](#) Safety Data Sheet, which has been sent via email to your institution.

WARRANTY AND LIMITATION OF REMEDY

Buyer agrees to purchase the material subject to Cayman's Terms and Conditions. Complete Terms and Conditions including Warranty and Limitation of Liability information can be found on our website.

Copyright Cayman Chemical Company, 02/12/2025

CAYMAN CHEMICAL

1180 EAST ELLSWORTH RD
ANN ARBOR, MI 48108 · USA

PHONE: [800] 364-9897
[734] 971-3335

FAX: [734] 971-3640

CUSTSERV@CAYMANCHEM.COM
WWW.CAYMANCHEM.COM