

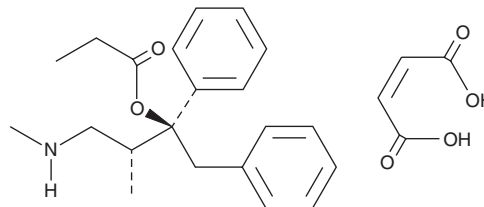
PRODUCT INFORMATION



(+)-Norpropoxyphene (maleate)

Item No. 15291

CAS Registry No.: 159208-83-0
Formal Name: (αS)-α-[(1R)-1-methyl-2-(methylamino)ethyl]-α-phenyl-benzeneethanol propanoate (ester), 2Z-butenedioate
MF: C₂₁H₂₇NO₂ • C₄H₄O₄
FW: 441.5
Purity: ≥95%
Supplied as: A crystalline solid
Storage: -20°C
Stability: ≥5 years



Information represents the product specifications. Batch specific analytical results are provided on each certificate of analysis.

Description

(+)-Norpropoxyphene (maleate) (Item No. 15291) is an analytical reference standard categorized as an opioid.¹ It is a metabolite of propoxyphene (Item Nos. 22769 | ISO60184).² This product is intended for research and forensic applications.

References

1. Depriest, A., Heltsley, R., Black, D.L., *et al.* Urine drug testing of chronic pain patients. III. Normetabolites as biomarkers of synthetic opioid use. *J. Anal. Toxicol.* **34(8)**, 444-449 (2010).
2. Crews, B.A., Mikel, C., Latyshev, S., *et al.* Unstable propoxyphene metabolite excreted in human urine is detected by liquid chromatography-tandem mass spectrometry. *J. Anal. Toxicol.* **33(7)**, 379-383 (2009).

WARNING

THIS PRODUCT IS FOR RESEARCH ONLY - NOT FOR HUMAN OR VETERINARY DIAGNOSTIC OR THERAPEUTIC USE.

SAFETY DATA

This material should be considered hazardous until further information becomes available. Do not ingest, inhale, get in eyes, on skin, or on clothing. Wash thoroughly after handling. Before use, the user must review the [complete](#) Safety Data Sheet, which has been sent via email to your institution.

WARRANTY AND LIMITATION OF REMEDY

Buyer agrees to purchase the material subject to Cayman's Terms and Conditions. Complete Terms and Conditions including Warranty and Limitation of Liability information can be found on our website.

Copyright Cayman Chemical Company, 06/13/2023

CAYMAN CHEMICAL

1180 EAST ELLSWORTH RD
ANN ARBOR, MI 48108 · USA

PHONE: [800] 364-9897
[734] 971-3335

FAX: [734] 971-3640

CUSTSERV@CAYMANCHEM.COM
WWW.CAYMANCHEM.COM