

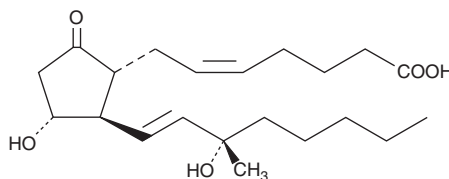
PRODUCT INFORMATION



15(S)-15-methyl Prostaglandin E₂

Item No. 14730

CAS Registry No.: 35700-27-7
Formal Name: 9-oxo-11 α ,15S-dihydroxy-15-methyl-prosta-5Z,13E-dien-1-oic acid
MF: C₂₁H₃₄O₅
FW: 366.5
Purity: \geq 98%
Stability: \geq 2 years at -20°C
Supplied as: A solution in methyl acetate



Laboratory Procedures

15(S)-15-methyl Prostaglandin E₂ (15(S)-15-methyl PGE₂) is a synthetic analog of PGE₂. For long term storage, we suggest that 15(S)-15-methyl PGE₂ be stored as supplied at -20°C. It will be stable for at least two years.

15(S)-15-methyl PGE₂ is supplied as a solution in methyl acetate. To change the solvent, simply evaporate the methyl acetate under a gentle stream of nitrogen and immediately add the solvent of choice. Solvents such as DMSO, dimethyl formamide, or ethanol purged with an inert gas can be used. The solubility of 15(S)-15-methyl PGE₂ in these solvents is approximately 100 mg/ml. 15(S)-15-methyl PGE₂ is stable for at least six months in these solvents if stored at -20°C.

Further dilutions of the stock solution into aqueous buffers or isotonic saline should be made prior to performing biological experiments. Ensure that the residual amount of organic solvent is insignificant, since organic solvents may have physiological effects at low concentrations. We do not recommend storing the aqueous solution for more than one day.

Organic solvent-free solutions of 15(S)-15-methyl PGE₂ can be prepared by evaporating the methyl acetate and directly dissolving the neat oil in aqueous buffers. The solubility of 15(S)-15-methyl PGE₂ in PBS (pH 7.2) is approximately 6 mg/ml. Store aqueous solutions of 15(S)-15-methyl PGE₂ on ice and use within 12 hours of preparation. Although the aqueous solutions of 15(S)-15-methyl PGE₂ may be stable for more than 12 hours, we strongly recommend using a fresh preparation each day.

Description

15(S)-15-methyl PGE₂ is a potent abortifacient. In human myometrium, it exhibits two times the relative affinity of PGE₂ for PGE₁ binding sites.¹ In concentration ranges of 1 to 300 ng/ml, 15(S)-15-methyl PGE₂ is ten times more potent than PGE₁ in contracting uterine smooth muscle.¹

Reference

1. Kimball, F.A., Kirton, K.T., Spilman, C.H., *et al.* Prostaglandin E₁ specific binding in human myometrium. *Biol. Reprod.* **13**, 482-489 (1975).

WARNING

THIS PRODUCT IS FOR RESEARCH ONLY - NOT FOR HUMAN OR VETERINARY DIAGNOSTIC OR THERAPEUTIC USE.

SAFETY DATA

This material should be considered hazardous until further information becomes available. Do not ingest, inhale, get in eyes, on skin, or on clothing. Wash thoroughly after handling. Before use, the user must review the complete Safety Data Sheet, which has been sent via email to your institution.

WARRANTY AND LIMITATION OF REMEDY

Buyer agrees to purchase the material subject to Cayman's Terms and Conditions. Complete Terms and Conditions including Warranty and Limitation of Liability information can be found on our website.

Copyright Cayman Chemical Company, 08/14/2015

CAYMAN CHEMICAL

1180 EAST ELLSWORTH RD
ANN ARBOR, MI 48108 · USA

PHONE: [800] 364-9897

[734] 971-3335

FAX: [734] 971-3640

CUSTSERV@CAYMANCHEM.COM
WWW.CAYMANCHEM.COM