

PRODUCT INFORMATION



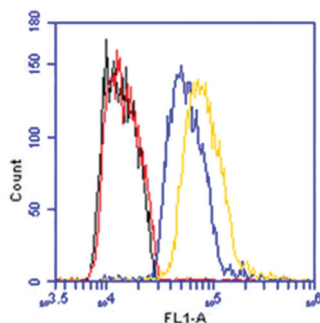
GPR12 (C-Term) Polyclonal Antibody

Item No. 14266

Overview and Properties

Contents:	This vial contains peptide affinity-purified polyclonal antibody
Synonym:	G Protein-Coupled Receptor 12
Immunogen:	Synthetic peptide from the C-terminal region of human GPR12
Species Reactivity:	(+) Human, other species not tested
Uniprot No.:	P47775
Form:	Lyophilized
Storage:	-20°C (as supplied)
Stability:	≥3 years
Storage Buffer:	TBS, pH 7.4 when reconstituted in 500 µl deionized water
Host:	Rabbit
Applications:	Flow cytometry (FC) and immunocytochemistry (ICC); the recommended starting dilution for FC is 1:200 and 1:100 for ICC. Other applications were not attempted and therefore optimal working dilutions should be determined empirically.

Image



Black: Blank
Red: Normal Rabbit IgG-FITC (0.01 µg/ml)
Blue: GPR12 C-Term (1 µg/ml)
Yellow: GPR12 C-Term (5 µg/ml)

A549 cells were fixed with cytospin solution (methanol and carbowax), blocked with 5% normal goat serum, and washed between steps. Samples were gated to exclude debris. FITC was detected in the FL1 channel of an Accuri C6 flow cytometer. Immune complexes were detected with Goat anti-rabbit FITC at 1:200.

WARNING
THIS PRODUCT IS FOR RESEARCH ONLY - NOT FOR HUMAN OR VETERINARY DIAGNOSTIC OR THERAPEUTIC USE.

SAFETY DATA
This material should be considered hazardous until further information becomes available. Do not ingest, inhale, get in eyes, on skin, or on clothing. Wash thoroughly after handling. Before use, the user must review the complete Safety Data Sheet, which has been sent via email to your institution.

WARRANTY AND LIMITATION OF REMEDY
Buyer agrees to purchase the material subject to Cayman's Terms and Conditions. Complete Terms and Conditions including Warranty and Limitation of Liability information can be found on our website.

Copyright Cayman Chemical Company, 11/14/2023

CAYMAN CHEMICAL
1180 EAST ELLSWORTH RD
ANN ARBOR, MI 48108 · USA
PHONE: [800] 364-9897
[734] 971-3335
FAX: [734] 971-3640
CUSTSERV@CAYMANCHEM.COM
WWW.CAYMANCHEM.COM

PRODUCT INFORMATION



Description

G protein-coupled receptor 12 (GPR12) is a high affinity receptor for sphingosine-1-phosphate, sphingosylphosphorylcholine and tyrosol that is expressed in brain, pituitary, ovary, and testis tissues.¹⁻⁵ GPR12 plays a role in neuronal differentiation, neuronal growth and the formation of synaptic contacts.^{2,5} Cayman's GPR12 receptor (C-Term) polyclonal antibody can be used for flow cytometry and immunocytochemistry of GPR12 on human samples.

References

1. Uhlenbrock, K., Gassenhuber, H., and Kostenis, E. Sphingosine 1-phosphate is a ligand of the human gpr3, gpr6 and gpr12 family of constitutively active G protein-coupled receptors. *Cell. Signal.* **14(11)**, 941-953 (2002).
2. Ignatov, A., Lintzel, J., Hermans-Borgmeyer, I., *et al.* Role of the G-protein-coupled receptor GPR12 as high-affinity receptor for sphingosylphosphorylcholine and its expression and function in brain development. *J. Neurosci.* **23(3)**, 907-914 (2003).
3. Lin, Z.J., Lu, X.M., Zhu, T.J., *et al.* GPR12 selections of the metabolites from an endophytic *Streptomyces* sp. associated with *Cistanches deserticola*. *Arch. Pharm. Res.* **31(9)**, 1108-1114 (2008).
4. Eidne, K.A., Zabavnik, J., Peters, T., *et al.* Cloning, sequencing and tissue distribution of a candidate G protein-coupled receptor from rat pituitary gland. *FEBS Lett.* **292(1-2)**, 243-248 (1991).
5. Tanaka, S., Ishii, K., Kasai, K., *et al.* Neural expression of G protein-coupled receptors GPR3, GPR6, and GPR12 up-regulates cyclic AMP levels and promotes neurite outgrowth. *J. Biol. Chem.* **282(14)**, 10506-10515 (2007).

CAYMAN CHEMICAL
1180 EAST ELLSWORTH RD
ANN ARBOR, MI 48108 · USA
PHONE: [800] 364-9897
[734] 971-3335
FAX: [734] 971-3640
CUSTSERV@CAYMANCHEM.COM
WWW.CAYMANCHEM.COM