

PRODUCT INFORMATION



PARP (Cleaved) Monoclonal Antibody

Item No. 13557

Overview

Contents: This vial contains 100 µg of protein G-purified IgG in 200 µl PBS containing 0.05% BSA and 0.05% sodium azide.

Immunogen: Synthetic peptide containing amino acids near the 214/215 cleavage site of human PARP

Species Reactivity: (+) Human PARP

Properties

Form: Monoclonal

Storage: ≤6 months at 4°C; ≥6 months at -20°C

Host: Mouse

Isotype: IgG_{2bκ}

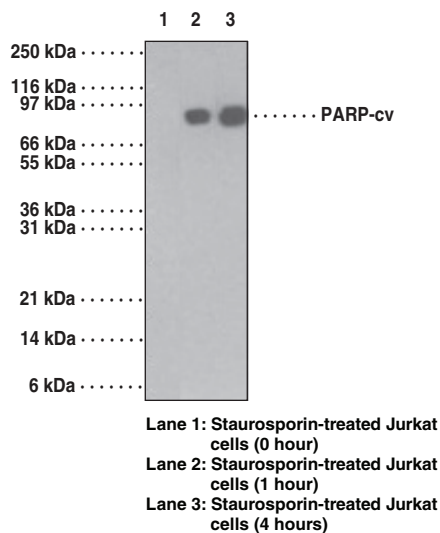
Applications

Western Blot: Suggested starting dilution is 1-2 µg

Flow Cytometry: Suggested starting dilution is 1-3 µg.

Other applications were not attempted and therefore optimal working dilutions should be determined empirically.

Image



WARNING

THIS PRODUCT IS FOR RESEARCH ONLY - NOT FOR HUMAN OR VETERINARY DIAGNOSTIC OR THERAPEUTIC USE.

SAFETY DATA

This material should be considered hazardous until further information becomes available. Do not ingest, inhale, get in eyes, on skin, or on clothing. Wash thoroughly after handling. Before use, the user must review the complete Safety Data Sheet, which has been sent via email to your institution.

WARRANTY AND LIMITATION OF REMEDY

Buyer agrees to purchase the material subject to Cayman's Terms and Conditions. Complete Terms and Conditions including Warranty and Limitation of Liability information can be found on our website.

Copyright Cayman Chemical Company, 07/31/2015

CAYMAN CHEMICAL

1180 EAST ELLSWORTH RD
ANN ARBOR, MI 48108 · USA

PHONE: [800] 364-9897
[734] 971-3335

FAX: [734] 971-3640

CUSTSERV@CAYMANCHEM.COM
WWW.CAYMANCHEM.COM