

PRODUCT INFORMATION

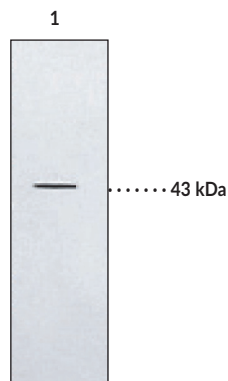


BLT₂ Receptor Polyclonal Antibody Item No. 120124

Overview and Properties

Contents:	This vial contains 500 µl of peptide affinity-purified polyclonal antibody.
Synonyms:	BLTR ₂ , Leukotriene B ₄ Receptor 2, LTB ₄ Receptor 2
Immunogen:	Peptide from the C-terminal region of human BLT ₂
Species Reactivity:	(+) Human, mouse
Uniprot No.:	Q9NPC1
Form:	Solid
Storage:	-20°C (as supplied)
Storage Buffer:	TBS, pH 7.4, 5 mg/ml BSA, after resuspension in 500 µl ddH ₂ O
Stability:	≥3 years
Host:	Rabbit
Application:	Western blot (WB); the recommended starting dilution is 1:200 or 1 µg/ml. Other applications were not tested, therefore optimal working concentration/dilution should be determined empirically.

Image



Lane 1: Mouse small intestine homogenate (40 µg)

WARNING
THIS PRODUCT IS FOR RESEARCH ONLY - NOT FOR HUMAN OR VETERINARY DIAGNOSTIC OR THERAPEUTIC USE.

SAFETY DATA
This material should be considered hazardous until further information becomes available. Do not ingest, inhale, get in eyes, on skin, or on clothing. Wash thoroughly after handling. Before use, the user must review the [complete](#) Safety Data Sheet, which has been sent via email to your institution.

WARRANTY AND LIMITATION OF REMEDY
Buyer agrees to purchase the material subject to Cayman's Terms and Conditions. Complete Terms and Conditions including Warranty and Limitation of Liability information can be found on our website.

Copyright Cayman Chemical Company, 11/08/2023

CAYMAN CHEMICAL
1180 EAST ELLSWORTH RD
ANN ARBOR, MI 48108 · USA
PHONE: [800] 364-9897
[734] 971-3335
FAX: [734] 971-3640
CUSTSERV@CAYMANCHEM.COM
WWW.CAYMANCHEM.COM

PRODUCT INFORMATION



Description

Leukotriene B₄ (LTB₄) promotes a number of leukocyte functions including aggregation, stimulation of ion fluxes, superoxide anion production, chemotaxis, and chemokinesis. Two G-protein coupled receptors, BLT₁ and BLT₂, which mediate the actions of LTB₄ have been cloned and characterized.^{1-3,5} The BLT₁ receptor is expressed in leukocytes, U937 cells, and to a much lower extent in spleen and thymus.⁵ The human BLT₂ receptor is a 358 amino acid protein with approximately 40% homology to BLT₁ at the amino acid level.¹⁻³ The BLT₂ receptor is more broadly expressed than the BLT₁ receptor, with highest levels observed in liver, spleen, ovary, intestine, and peripheral blood leukocytes.¹⁻³ Activation of the BLT₂ receptor by LTB₄ leads to Ca²⁺ mobilization as well as decreases in cyclic AMP, indicating interaction of the receptor with G_q and G_i classes of G-proteins.²

References

1. Yokomizo, T., Kato, K., Terawaki, K., *et al.* A second leukotriene B₄ receptor, BLT₂: A new therapeutic target in inflammation and immunological disorders. *J. Exp. Med.* **193**, 421-431 (2000).
2. Wang, S., Gustafson, E., Pang, L., *et al.* A novel hepatointestinal leukotriene B₄ receptor. *J. Biol. Chem.* **275**, 40686-40694 (2000).
3. Kamohara, M., Takasaki, J., Matsumoto, M., *et al.* Molecular cloning and characterization of another leukotriene B₄ receptor. *J. Biol. Chem.* **275**, 27000-27004 (2000).
4. Paredes, Y., Massicotte, F., Pelletier, J.-P., *et al.* Study of the role of leukotriene B₄ in abnormal function of human subchondral osteoarthritis osteoblasts. Effects of cyclooxygenase and/or 5-lipoxygenase inhibition. *Arthritis Rheuma (Munch)* **46(7)**, 1804-1812 (2002).
5. Yokomizo, T., Izumi, T., Chang, K., *et al.* A G-protein-coupled receptor for leukotriene B₄ that mediates chemotaxis. *Nature* **387**, 620-624 (1997).

CAYMAN CHEMICAL
1180 EAST ELLSWORTH RD
ANN ARBOR, MI 48108 · USA
PHONE: [800] 364-9897
[734] 971-3335
FAX: [734] 971-3640
CUSTSERV@CAYMANCHEM.COM
WWW.CAYMANCHEM.COM